



COMMERCIAL SERVICES

MANUFACTURING AND PESTS

Help Protect Your
Supply Chain

WHY COMMERCIAL PEST MANAGEMENT MATTERS FOR MANUFACTURERS

Pests don't care how clean your facility is; they'll find a way in if you let them. In manufacturing, a single pest issue anywhere in your supply chain can mean rejected shipments, lost contracts and damaged reputations.

With today's emphasis on supply chain transparency and traceability, pest management isn't just best practice — it's essential business protection. That's why leading manufacturers trust Orkin Commercial Services to deliver industry-leading pest control that protects every link in their operation.



Stay Ahead of Pests — Not Just a Step Behind

Pests are smart — Orkin Pros are smarter. Orkin knows how pests sneak into commercial environments and how to outsmart them at every turn.

In this guide, Orkin experts share best practices for how you can help keep pests out of your supply chain, including:

- ◆ [The Cost of Pests to Your Manufacturing Supply Chain](#)
- ◆ [Identifying Your Top Pest Threats](#)
- ◆ [The Five Weak Links in the Chain](#)
- ◆ [Checklist: Your Action Plan for Protecting Your Business](#)



THE COST OF PESTS TO YOUR MANUFACTURING SUPPLY CHAIN

In today's interconnected manufacturing world, a single pest sighting anywhere in your supply chain can trigger costly consequences. For manufacturers, pests aren't just nuisances — they're disruptors that can impact your entire operation from suppliers to distributors.

Recent industry data reveals that...

- ◆ Disruptions in the supply chain can result in an annual revenue loss of 6-10%.
- ◆ One long-term disruption can lead to a loss of 50% of EBITDA.
- ◆ The leading consequence of disruptions in billion-dollar firms is damage to reputation or image.



Proactive Defense Is Smart Business

The data speaks for itself: even short-term disruptions can cost manufacturers millions. But beyond the dollars, the damage to brand trust and operational continuity can be even harder to recover from. Taking action before issues arise helps ensure your supply chain stays resilient.



IDENTIFYING YOUR TOP PEST THREATS

Proactive pest management starts with knowing your risks. Here are the most common pest threats for manufacturing.

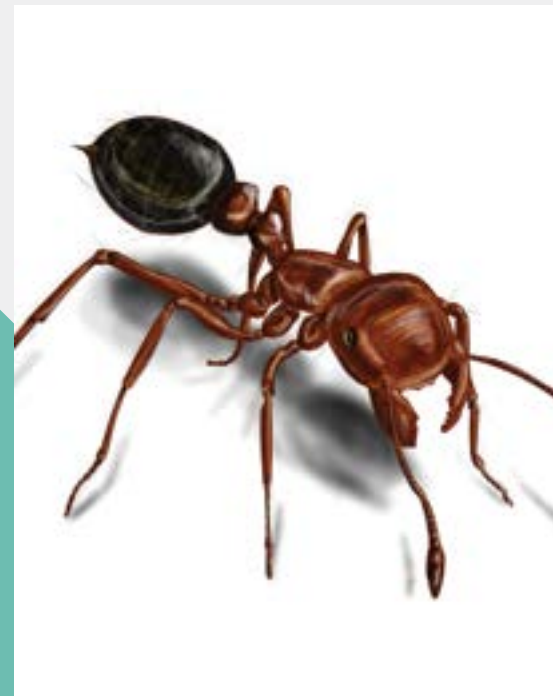


Rodents

Mice and rats can enter through openings from $\frac{1}{4}$ - $\frac{1}{2}$ inches and cause significant product damage. Look for gnaw marks, droppings and nesting materials.

COMMON ENTRY POINTS:

Loading docks, utility penetrations and gaps under doors.



Ants

Attracted to food and moisture, ants can quickly infest most areas within a facility.

COMMON ENTRY POINTS:

Tiny foundation cracks, floor cracks and wall voids.

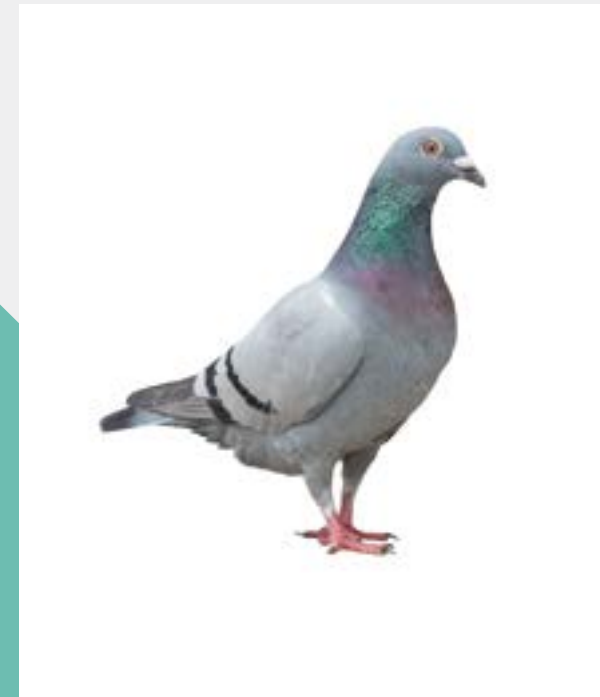


Flies

These insects thrive in wet, unsanitary conditions and can contaminate surfaces rapidly.

COMMON ENTRY POINTS:

Open doors, damaged screens and ventilation systems.

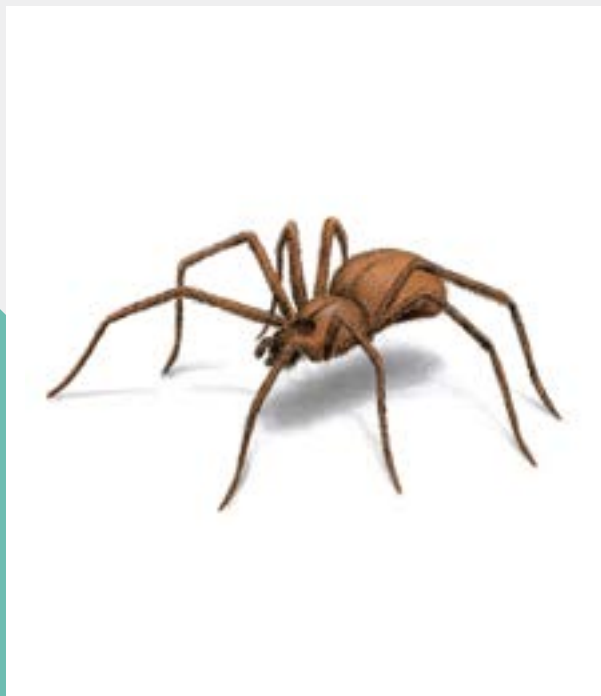


Occasional Invaders

Birds, wildlife and other pests may enter during extreme weather or by accident, leading to contamination.

COMMON ENTRY POINTS:

Roof access points, damaged exterior walls and seasonal openings.

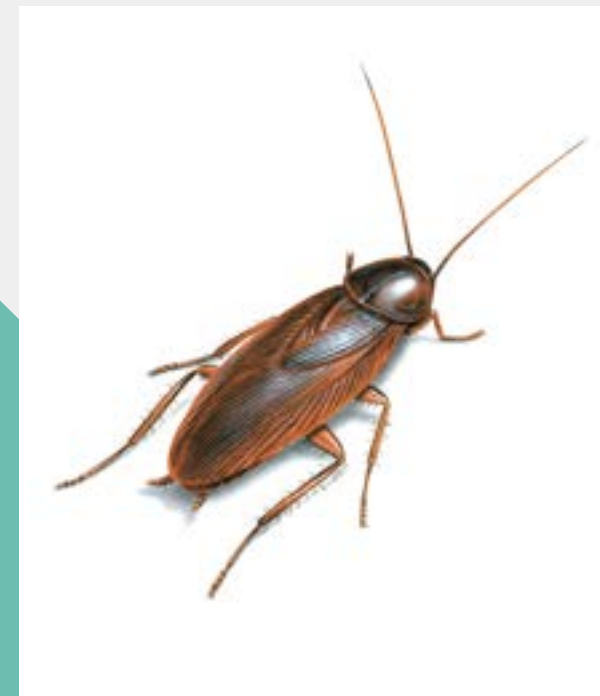


Spiders

Pests in this category seek out areas of insect activity. Their webs and bodies can contaminate products.

COMMON HIDING SPOTS:

Corners, under shelving, around inside and outside lights and rarely disturbed storage areas.



Cockroaches

Infamous invaders, roaches can hitchhike in shipments, enter through drains or even with employees and clients.

COMMON HIDING SPOTS:

Corrugated cardboard, wooden pallets and warm equipment housings.

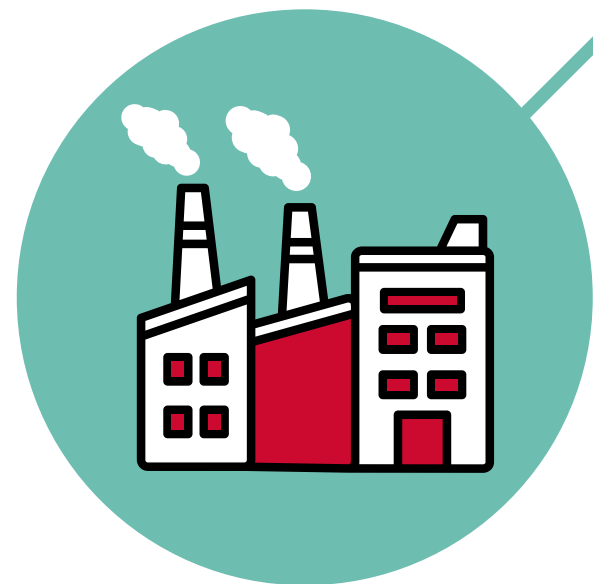
THE FIVE WEAK LINKS IN THE CHAIN

A supply chain is only as strong as its weakest link. Here are the top five points where pests can break through:



2 Packaging

Cardboard, adhesives and other materials can attract pests like cockroaches and rodents. They can eat the glue and hide within boxes, which makes packaging one of the first places you can spot a problem.

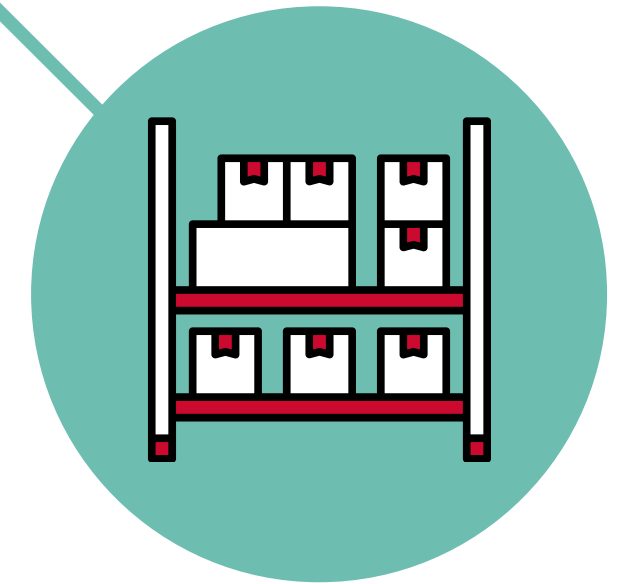


4 Your Facility

Small cracks, open doors and overlooked spaces are open invitations for pests. Additionally, your facility provides shelter from the elements, a dependably controlled climate and access to water.

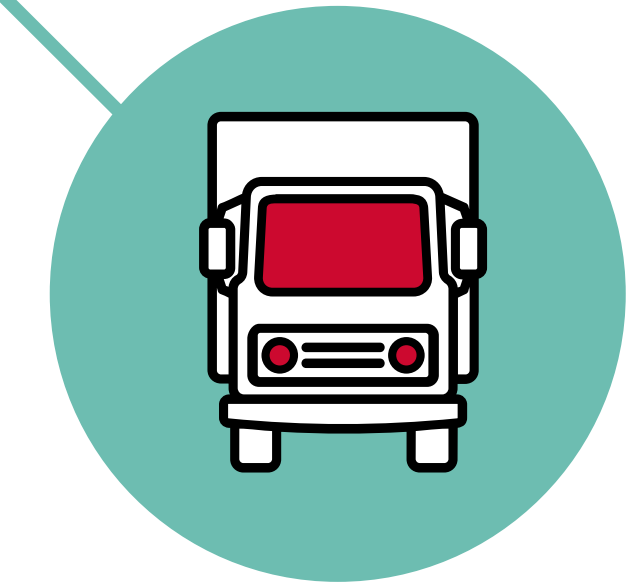
1 Suppliers

Even trusted partners can deliver more than you bargained for. The materials you get from your suppliers can be susceptible to pests while in storage or during shipment.



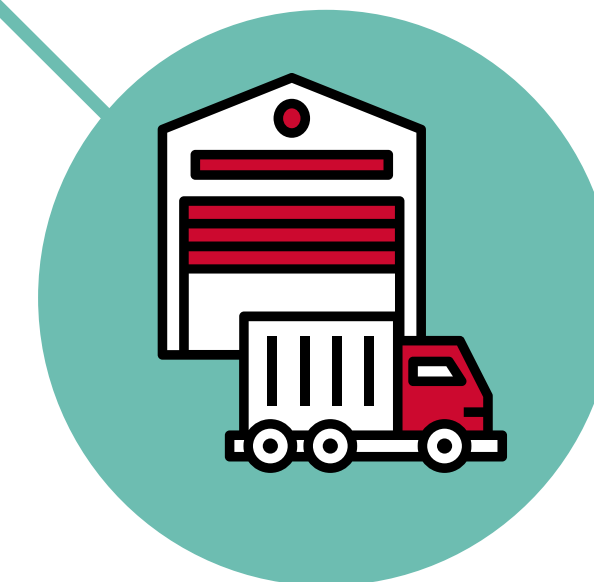
3 Transportation

Trucks and shipping containers can carry pests between facilities.



5 Distributors

Distribution centers are high-risk for infestation if they don't follow best practices.





CHECKLIST: YOUR ACTION PLAN FOR PROTECTING YOUR BUSINESS

Use this checklist to strengthen each link in your supply chain against pest threats. These practical steps will help you prevent costly infestations, maintain compliance and protect your reputation.

For Suppliers

- Confirm suppliers' pest management programs meet or exceed your standards
- Request and review audit scores for pest control performance

For Shipments

- Inspect all delivery trucks for cleanliness and signs of pests
- Check shipments for pest activity evidence such as gnaw marks, droppings, webbing and live or dead pests
- Use black lights to detect hard-to-spot signs, like rodent urine
- Remove items from original containers and store off the floor
- Isolate and report any infested shipments immediately

For Your Facility

- Teach employees to spot and report pest activity
- Maintain strict sanitation routines at all times
- Inspect and maintain exterior landscaping
- Remove standing water on grounds and rooftops
- Seal all unnecessary exterior openings, including doors and cracks
- Apply First In, First Out (FIFO) inventory management
- Isolate affected products or areas if pests are found
- Develop a customized IPM plan for each facility in your network

For Distributors

- Inspect every outgoing truck before it leaves your facility
- Confirm distributors' pest management protocols and audit results
- Maintain open communication with all supply chain partners



PARTNER WITH ORKIN FOR PRECISION PROTECTION™

Pests hate us — manufacturers love us. Constant vigilance and proactive prevention are essential to protect your products, your people and your bottom line.

Orkin's Precision Protection™ program is designed specifically for manufacturers — delivering proactive, science-based solutions tailored to your facility's unique needs. Our approach leverages Integrated Pest Management (IPM), focusing on facility maintenance, sanitation and exclusion — using chemicals only when necessary — to prevent pest problems before they start.

With Orkin, you gain a true partner in pest prevention, committed to constant vigilance and industry-leading expertise that keeps your products, people and supply chain protected at every step.





PROTECT YOUR SUPPLY, PROTECT YOUR REPUTATION

Modern pest management is about much more than reacting to problems — it's about anticipating and preventing them with precision and expertise.

If you're ready to strengthen your supply chain and safeguard your operations with an effective IPM program, [request a complimentary site inspection and customized plan.](#)

With Orkin, you gain a partner dedicated to keeping your business — and every link in your supply chain — protected from even the most persistent pests.

