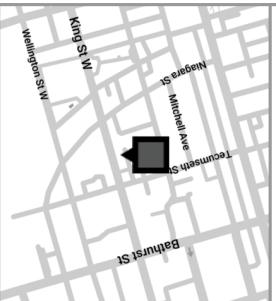


STARTWELL

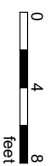
Prepared: 01/21/2020
Measured: 03/02/2019

786 King Street West
Toronto, Ontario
Canada

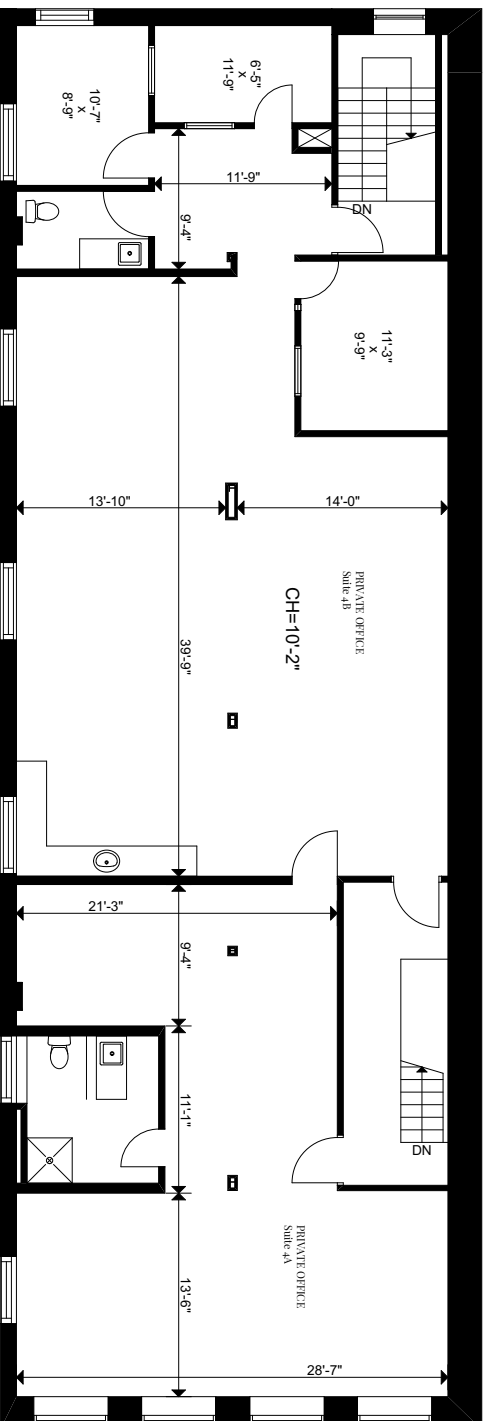
Floor 1: 5167 sq ft
Floor 2: 4993 sq ft
Floor 3: 5191 sq ft
Floor 4: 3006 sq ft
Total Exterior Gross Area: 18,357 sq ft
*Area determined according to:
ANSI/BOMA Z85.5:2009



NO ACCESS PROVIDED



Penthouse Floor: Either one (~45 desks) or two private offices (20 & 25 desks) with 3 inner lockable rooms + 2 bathrooms, open concept kitchen & gas fireplace.



Prepared: 01/21/2020
Measured: 03/02/2019

786 King Street West
Toronto, Ontario
Canada

4th Floor

Floor 1: 5167 sq ft
Floor 2: 4993 sq ft
Floor 3: 5191 sq ft
Floor 4: 3006 sq ft
Total Exterior Gross Area: 18,357 sq ft
*Area determined according to:
ANSI/BOMA Z85.5:2009

