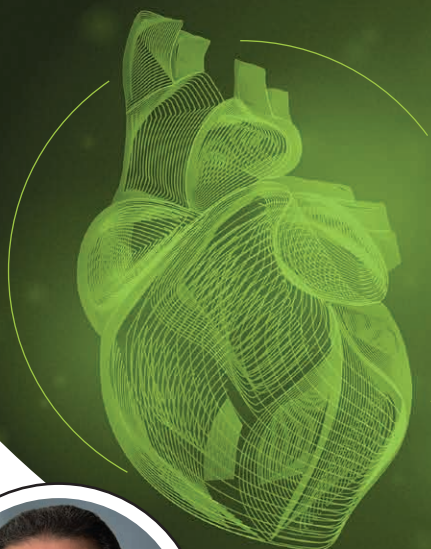


# PLEASE JOIN US FOR A CYTOKINETICS-SPONSORED LEARNING STUDIO AT AHA 2022

PAID ADVERTISEMENT



## IS THE BURDEN OF SYMPTOMATIC CHRONIC HFrEF INEVITABLE?

Defining and recognizing  
early signs or symptoms  
of WHF



**James Januzzi**  
MD, FACC, FESC

Hutter Family Professor of Medicine,  
Harvard Medical School; Cardiology Division,  
Massachusetts General Hospital;  
Trialist, Baim Institute for Clinical Research



**Carolyn Lam**  
MBBS, PhD, FRCP,  
FAMS, FACC, FESC

Senior Consultant of the National Heart  
Centre Singapore; Professor of  
Duke-National University of Singapore;  
Co-founder, Us2.ai



**Robert J. Mentz**  
MD, FHFA, FACC, FAHA

Chief, Heart Failure Section, Duke University  
Medical Center; Associate Program Director,  
Duke Cardiovascular Disease Fellowship;  
Editor-in-Chief, *Journal of Cardiac Failure*,  
Official Journal of the HFSA

### SESSION DESCRIPTION

Explore challenges of worsening signs or symptoms in high-risk patients, including those with hypotension and low EF. Review proactive clinical approaches that may help HCPs recognize early signs or symptoms of patients with WHF.

**DON'T FORGET  
DAYLIGHT SAVINGS  
TIME ENDS  
ON NOV. 5TH**

**SUNDAY, NOVEMBER 6, 2022 @ 9:30-10:15 AM CT  
MCCORMICK PLACE CONVENTION CENTER  
LEARNING STUDIO II | CHICAGO, IL**

*This is a sponsored Learning Studio. This event is not part of the official Scientific Sessions 2022 as planned by the AHA Committee on Scientific Sessions Program. This event does not qualify for continuing education credit. Faculty disclosures will be provided at the presentation.*

