



Sensata

Technologies



HOW SENSORS ARE MOVING MATERIALS HANDLING TOWARDS SAFE AUTOMATION

WHITE PAPER

NEXT GENERATION SENSING TECHNOLOGIES PUT THE SMART IN ROBOT AGVS

Automated and integrated systems are proving to be more efficient and cost-effective solutions in industries like Materials Handling. The rise of Automated Guided Vehicles (AGVs) in these applications is driving the need for safer and more reliable sensing systems and controls.

-By Alessandro Bosio, Sensata Technologies

The Industry 4.0 revolution is enabling a new generation of Automated Guided Vehicles (AGVs) for use in the first wave of smart manufacturing and distribution facilities. This revolution also requires new ways of thinking across all aspects of materials handling, especially when it comes to functional safety and reducing accidents in the workplace, and in turn, presenting a new challenge to sensing and control manufacturers.



A MARKET ON THE MOVE

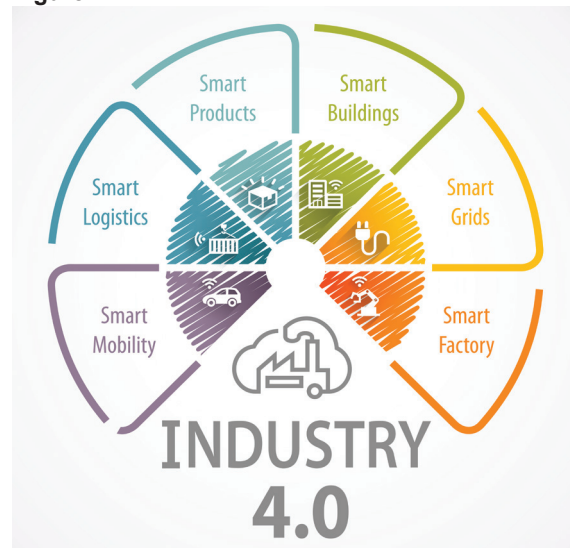
The adoption of AGVs into the materials handling ecosystem has been far from spectacular, but all that is changing with the fourth technology revolution and the rise of the inter-connected workplace.

AGVs currently represent about 10% of the global market for automated materials handling equipment.

The future of AVGs will undoubtedly be autonomous –

systems that are adaptive and feature intelligence-based capabilities that allow them to respond within bounded domains to situations that were not pre-programmed in the design. Autonomous vehicles for use in factories, industrial facilities, retail outlets, warehouses, etc., can be categorized into four distinct 'types': forklift trucks (moving goods horizontally and vertically); pallet lift trucks (horizontal only); tow vehicles; and unit load carriers (to convey heavy goods from conveyor to assembly line).

Figure 1

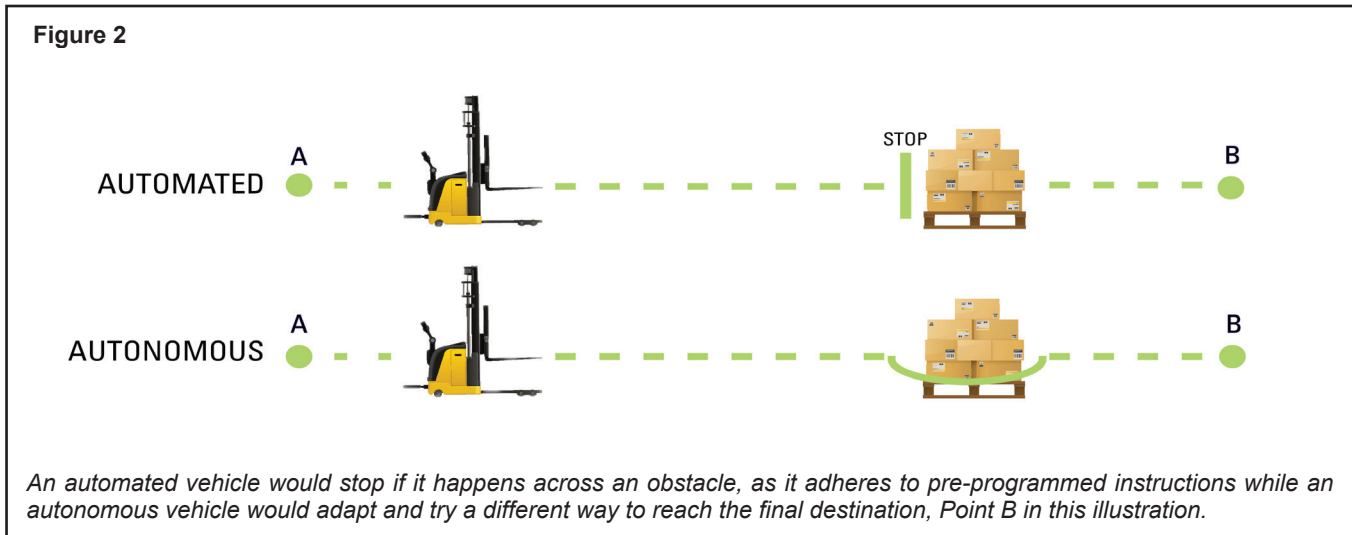


Automated Guided Vehicles are becoming more popular in materials handling applications, where the Industry 4.0 revolution is demonstrating the value of integrated automation.

The future of AVGs will undoubtedly be autonomous – systems that are adaptive and feature intelligence-based capabilities that allow them to respond within bounded domains to situations that were not pre-programmed in the design. Autonomous vehicles for use in factories, industrial facilities, retail outlets, warehouses, etc., can be categorized into four distinct ‘types’: forklift trucks (moving goods horizontally and vertically); pallet lift trucks (horizontal only); tow vehicles; and unit load carriers (to convey heavy goods from conveyor to assembly line).

less frequently used. AGV manufacturers most commonly consider the four following technologies for new equipment/ installation.

In **magnetic** navigation, various light duty AGVs use magnetic tape for the guide path. One major advantage of tape over wired guidance is that it can be easily removed and relocated if the course needs to change. It also removes the expense involved in restructuring the floor of the factory or warehouse. A limitation of this method is that



Today, most AGVs are deployed to automate materials handling and packaging logistics, with man and machine working together. A few companies are taking automation to the next level by adding a robot arm to pick the desired object, taking man completely out of the equation. While this is where the industry is heading, object recognition and grasping are two of the biggest challenges yet to be fully resolved.

So why are manufacturing and logistics facilities increasingly moving towards AGV-based solutions? One of the reasons is that in the long term, AGVs have been shown to be more efficient and cost-effective than human controlled materials handling equipment. In addition, AGVs are intrinsically safer, for they remove the issue of operator error. Arguments against, however, include the high level of initial capital investment required and that not all sites can accommodate such systems on the floor. But perhaps the biggest barrier to the wider adoption of AGVs is that there is not yet a single navigation technology against which a consistent standard can be set, compared, and measured.

NAVIGATION AND STEERING CONTROL

Navigation Technologies

There are many types of navigation technologies in the market but some (like wire, optical, and spot) are now

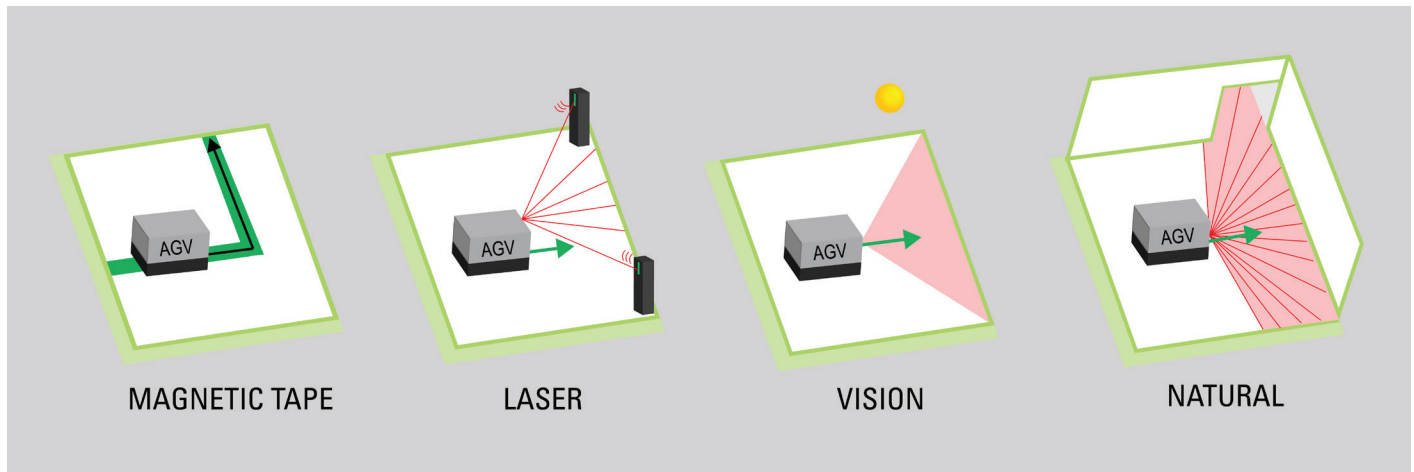
the routes have to be fixed and well defined by the tape. If any obstacle is detected in front of the AGV, it stops and waits for the problem to be solved (for example, the obstacle to be removed) before it restarts.

Laser-guided navigation is similar to an electronic eye, which, by means of reflectors positioned on the surrounding walls, uses triangulation to determine the exact position of the vehicle to allow it to carry out the required tasks in the operating area. The advantage of laser-guided technology is that it requires no floor work as in the case of magnetic guidance systems. Additionally, route changes can be made easily via software updates to ensure maximum flexibility for company logistics.

Vision-guided vehicles (VGVs) use optic sensors (cameras), in addition to other sensors such as speed or laser sensors, to navigate, and software within the vehicle effectively builds a 3D map of its operating environment. This technology allows the vehicles to operate in automatic or manual mode for maximum flexibility.

AGVs based on **natural** navigation technology do not require reflectors or markers so they require less installation time and are easily integrated into existing systems, minimizing the impact on current operations. In this type of navigation, LiDAR, Light Detection and Ranging, is the main technology used.

Figure 3



Magnetic tape, laser, vision and natural navigation technologies are the most popularly used in modern AGVs, depending on the specific application.

Steering Control Configurations

A variety of configurations can be used to provide steering control in AGVs. To determine what method is the best fit for a particular vehicle and application, four factors are usually considered: the ease of building; the steering and driving capabilities; the ability to navigate in confined areas; and the overall cost of the vehicle. Selecting the appropriate steering control is fundamental in order to reach the right compromise between performance and cost for any given application.

The three most commonly used set ups for steering control in AGVs are the three-wheel, differential, and quad configurations.

The **three-wheel** configuration is the most common solution for lift truck AGVs. They are relatively easy to implement and provide very accurate control. Frequently, this design relies on encoders to monitor and measure the speed and direction of one master wheel that determines the vehicle's movement.

The **differential** configuration is a popular solution for unit load carrier and tow-vehicle (or tugger) AGVs since it is possible to rotate around the center of the vehicle, although with some turning limitations. The steering control is achieved using different speeds in either forwards or backwards directions on the two controlled wheels, where a single motor and an encoder are used on each wheel.

A **quad** wheel configuration provides the most maneuverability as it permits 360 degrees of movement in any direction, making it the ideal solution for unit load carriers. The ability to steer the vehicle in a sideways or crabbing motion allows for better and more accurate navigation in

tighter and more challenging spaces. As there are more wheels that require steering controls and accompanying motion control components such as encoders and sensors, this type of configuration is the most complex.



SAFE AUTOMATION WITH SENSORS

Hand-in-hand with the navigation and steering technologies comes a wide range of sensors that provide critical feedback to the control system about the AGV's surroundings and operation. The sensors used to navigate, like LiDAR and cameras, and those used to control ground speed and direction, like encoders, are critical to ensure precise and safe operation.

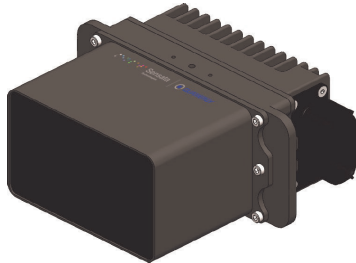
LiDAR for Accurate AGV Navigation

One of the most recent innovations in AGV design is the use and application of LiDAR technology. Similar to radar, LiDAR instead uses laser beams of light bouncing off the environment to accurately measure object range and 3D shape while also providing intensity data that helps detect things like lane markings. Whereas camera-based solutions, for example, can sometimes struggle in environments that are prone to sudden vibration, low light or dust, LiDAR systems prove to be more reliable. Compared to other navigation approaches, they do not require external targets such as reflectors, RFID, or markers for navigation. As such, they are ideally suited not only for localization and mapping, but also to help prevent collisions and ensure loads are properly and safely engaged and placed.

Traditionally, LiDAR sensors have been costly and based on a mechanical scanning design. LiDAR technology is moving forward however, and new, entirely solid-state solutions (i.e. they have no moving parts) require less power and deliver

higher resolution at a longer range. Not only is this new generation of LiDAR sensors more reliable than mechanical models, it is also more affordable. By mounting several small solid-state LiDAR sensors in an array, a live 3D surround view is created that can detect and track stationary and moving objects as required.

Figure 4



Sensata-Quanergy's solid state LiDAR sensors provide a more affordable and reliable navigation solution than traditional mechanical models.

A perfect fit for applications relying on natural navigation (and a technology that includes both vision and laser-guided components), the latest LiDAR solutions offer the highest resolution with the maximum amount of system flexibility. Areas of interest and scan patterns can be configured as needed and the compact, modular design allows for the integration of third-party performance processing hardware and software.

Encoders Monitor Speed and Direction

To control ground speed and direction in response to the data coming from the navigation technology in a broad range of AGVs, highly precise and safety-rated encoders are often used. To minimize or eliminate risk to machinery and systems in industrial applications, components such as encoders can be certified to industry standards of performance and safety levels.

Figure 5



Functional
Safety
Type
Approved

www.tuv.com
ID: 0600000000

Sensata's functional safety encoders rated to SIL3/PLe, Cat.4, are ideal for use in AGVs to ensure highest system safety, where they monitor ground speed and direction control.

For AGV applications, components that are rated up to Safety Integrity Level 3, or SIL3, are ideal, as this allows for the highest safety level in the system. SIL3-rated encoders can often be more expensive than those of a lower safety rating, but they greatly reduce the risk of failure to the system, which in the case of an AGV navigating a warehouse, could prevent costly damage or injury.

Using encoders of a lower rating, like SIL2 or less, often means that additional encoders may be required for redundancy in order to achieve an acceptable level of risk for a given application. The need for extra components adds complexity and cost to the system, and can be a serious issue in the space-restricted design of automated/autonomous vehicles.

Draw-Wire Sensors Ensure Proper Mast Height

The aforementioned sensors and functions are used broadly across the entire range of AGVs applications. If we focus on fork lift truck and pallet lift truck AGVs specifically, then several other sensors also need to be considered.

In these applications, additional encoders and position sensors are required to ensure safe and controlled operation. The mast height (or fork height) control could be considered for driven lift trucks but it becomes essential in lift truck AGVs.

Controlling the mast or fork height in a lift truck is crucial for proper load positioning as goods must be safely removed or stored at varying heights and to prevent collisions with overhead items. Also known in the industry as cable transducers, string potentiometers, linear position string pots, and string encoders, draw wire sensors are used to provide precise linear position feedback of the mast.

These components utilize a flexible cable, a spring-loaded spool, and a sensor (an optical encoder with incremental, absolute, analog or potentiometric output or, in some cases, a hall effect sensor) and are ideal for wet, dirty, or outdoor environments. This type of position sensor can also be used in AGVs to monitor lateral fork movements for automatic pre-setting to various pallet sizes.

Rotary Hall Effect Sensors Help Prevent Load Spills

Rotary hall effect sensors are used in AGVs for different functions like the fork tilt control in lift truck AGVs (and lift trucks in general).

Positioned at the bottom of the mast, this sensor provides the functionality to calibrate and control the inclination of the fork and prevent the load from being spilled. In addition, electric-driven scissor lift tables can be integrated into the AGV's in order to raise and lower a static fixture onto the vehicle for transport, or to position the product for human interface. In these cases, a rotary hall effect sensor is used to measure the inclination of the lateral scissors and then

regulate the fixture to the desired height.

Figure 6



Hall effect sensors like Sensata's 9360 and 9960 models feature a standard operational life of 35 million cycles, linearity of $\pm 0.5\%$, up to IP69K sealing ratings and operating temperatures of 85°C ; making them ideal for a wide variety of applications including fork inclination and steering control.

There are other sensors used in AGVs: pressure sensors are used to control the load weight in fork lifts, and load cells can be used for the same function in unit load carriers; in magnetic navigation systems, specific sensors for track guidance along magnetic tape are used. The magnetic sensor measures how far from the center of the tape it is and provides the information to the motor controller, which will then adjust the steering so the vehicle remains at the center of the track.

AGVs guided by inertial navigation use transponders to verify that the vehicle is on course, and a gyroscope to detect the slightest change in the direction of the vehicle. In lift truck applications, in order to prevent the AGVs from colliding and to safely load and unload pallet materials, compact photoelectronic sensors are integrated into the narrow fork cone ends as well as the metal chassis.

Figure 7



Hall effect sensors like Sensata's 9360 and 9960 models feature a standard operational life of 35 million cycles, linearity of $\pm 0.5\%$, up to IP69K sealing ratings and operating temperatures of 85°C ; making them ideal for a wide variety of applications including fork inclination and steering control.

The materials handling sector is one of the most important to designers, manufacturers, and engineers working with sensing and control technologies, and the rise and rise of Automated Guided Vehicles is accelerating the development of new and even more sophisticated sensing solutions.

The increasing interaction between man and machine means that the watchword in materials handling remains 'safety', and this in turn means that sensors and controls manufacturers are continuing to raise the bar in innovation and excellence, while at the same time reducing cost and size. Today's emerging sensing technologies are fast becoming the standard product of tomorrow, as materials handling equipment designers, manufacturers, and operators seek greater efficiencies, better performance, and the highest possible levels of safety.