

## COMPLETE POWERTRAIN SOLUTIONS

*A CVT TRANSMISSION BRINGING BENEFITS IN ALL CONDITIONS*



### Increased Efficiency, Productivity and Fuel Savings

- ∞ Fully mechanical CVT: maximizing productivity and fuel economy
- ∞ Automatic shifting and infinite number of ratios resulting in improved vehicle performance and engine optimization, increasing work efficiency and saving time
- ∞ Maximum tractive effort at low engine rpm (no torque converter)

### Flexible Technology

- ∞ Use with mechanical or electronic engine
- ∞ Drop in replacement for a PowerShift
- ∞ Open platform controls and software to adjust the vehicle sophistication level: you design your controls!



### Greater Ease of Use

- ∞ Simple and precise controls provide for an extremely nimble vehicle
- ∞ Smooth and efficient fwd/reverse shuttling, resulting in the most comfortable ride
- ∞ Replicates torque converter behavior

## Mechanical CVT 2 Range PowerShift

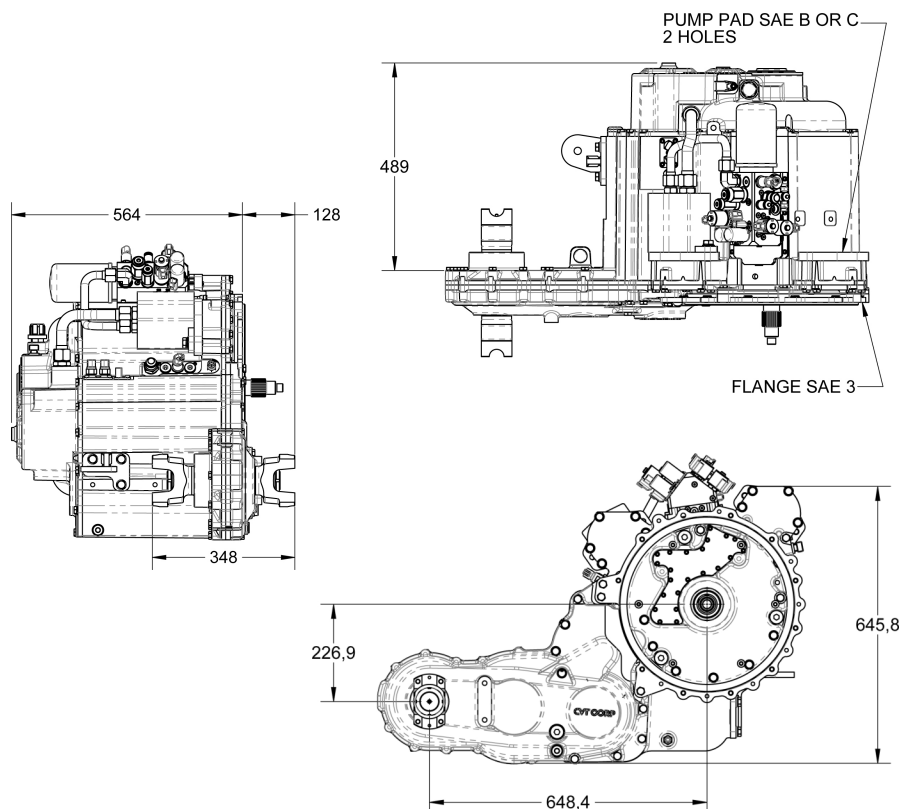
### General Ratings

Power Rating (kW)	96 @ 2200 rpm
Max Input Speed (rpm)	2600 (3300 overrun)
Max Input Torque (N*m)	550 (825 peak)
Max Output Speed (rpm)	3100 (4300 overrun)
Max Output Torque (N*m)	4000 (5500 peak)
Range of Ratios	8.27 to 0.6 (span of 13.78)
Number of Range	2 Fwd / 1 Rev
Range Shifting	PowerShift
Reverse Ratios	8.38 to 1.4 (span of 6)
Reverse Shifting	Power Shuttle
4WD	Locked

### Dimensions

#### Lateral Drop Configuration (LD)

Configuration (LD)



#### Vertical Intermediate Drop Configuration (VID)

Configuration (VID)

