

RECOGNIZING AN ASH TREE

Branch and Bud Arrangement

Branches and buds are directly across from each other and not staggered. When looking for opposite branching in trees, please consider that buds or limbs may die; hence not every single branch will have an opposite mate.

Seeds

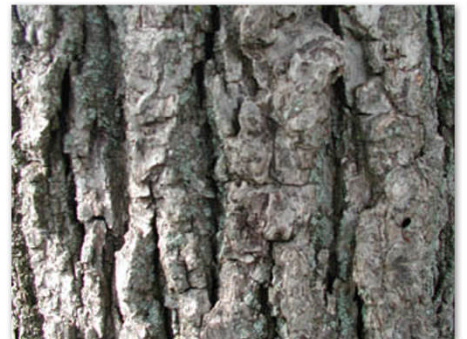
When present on trees, seeds are dry, oar-shaped samaras. They usually occur in clusters and typically hang on the tree until late fall, early winter.

Bark

On mature trees, the bark is tight with a distinct pattern of diamond-shaped ridges. On young trees, bark is relatively smooth and ashy gray.

Leaves

Leaves are compound and composed of 5-11 leaflets. Leaflet margins may be smooth or toothed. The only other oppositely branched tree with compound leaves in boxelder, which almost always has three to five leaflets. White ash and green ash leaves (most common in Midwest) pictured below.



TRUGREEN®