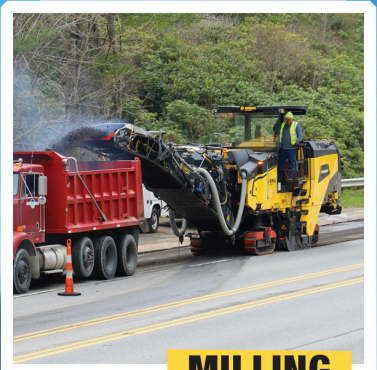




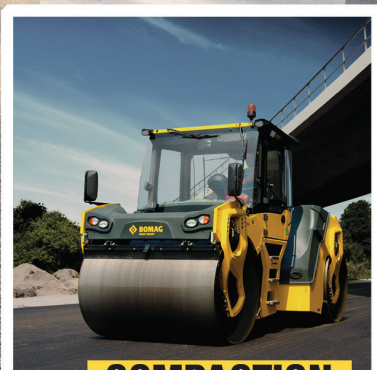
**BUILDING  
BETTER ROADS**



**MILLING**



**PAVING**



**COMPACTION**



# ABOUT BOMAG...

**Bopparder Maschinenbau-Gesellschaft mbH** is a company much better known by the acronym **BOMAG**. Globally headquartered in Boppard, Germany, BOMAG is a world market leader in compaction technology. For more than 60 years, BOMAG has driven the industry with innovative advancements not only in compaction equipment, but also in paving, milling, recycling/stabilizing and landfill compacting machines.

The North American headquarters is located in Ridgeway, South Carolina, and houses both the manufacturing and parts distribution facilities for the United States and Canada.

In 2005, BOMAG was acquired by the international FAYAT Group and has continued to grow its global footprint under Fayat leadership. Today, BOMAG has a staff of more than 2,500 employees to support its global dealer network of more than 500 dealers. To learn more about BOMAG visit [www.bomag.com/us-en](http://www.bomag.com/us-en).



*BOMAG Americas factory, warehouse and training center is headquartered in Ridgeway, South Carolina.*

# ABOUT THE FAYAT GROUP...

**The FAYAT Group** is the number one independent construction group in France and a worldwide leader in road equipment. With more than 23,500 employees serving 234 subsidiaries in 170 countries, the FAYAT Group is a global powerhouse in every sector it serves. The FAYAT Group has businesses in seven key industries – road equipment, public works, building, energy services, metal, foundations and pressure vessels on five continents and it generated a sales revenue of 6.1 billion US dollars in 2023.

The FAYAT Group was founded in 1957 by Clément Fayat and today is managed by his two sons, Mr. Jean-Claude Fayat and Mr. Laurent Fayat, who maintain and develop the company's success and growth.

With 25 production sites around the world, the FAYAT Road Equipment Division is the world leader in road construction equipment and services. To learn more about the FAYAT Group, visit [www.fayat.com](http://www.fayat.com).



*The range of products offered through the specialized subsidiaries within the Fayat Road Equipment Division fulfill the demands of every step of the road life cycle.*

# THINK FURTHER. THINK TECHNOLOGY.

BOMAG is synonymous with innovation in the road construction and compaction industries. We focus on creating the most efficient machines in the industry so you can focus on getting the job done! While BOMAG is known globally for our superior compaction products, we also offer a full line of premium paving and cold milling machines, as well as recycler/stabilizers and landfill compactors. Don't forget the light equipment! Our line-up of tampers, plates, vibratory rollers and multi-purpose trench compactors pack a punch while giving hours of maintenance-free service in even the smallest spaces.

## COMPACTION TECHNOLOGY



The patented BOMAG ECONOMIZER continuously shows the operator the degree of compaction, avoiding unnecessary passes, and saving time and money and reducing machine wear and tear on every job.



ASPHALT MANAGER 2 offers the ultimate flexibility in compaction technology. The operator simply chooses the layer thickness to be compacted and ASPHALT MANAGER does the rest, avoiding over compaction and providing infinitely variable amplitudes.



The NEW BOMAP system provides GPS mapping technology on Android devices to document real-time roller passes for machines from any manufacturer. Adding a BOMAP antenna provides even more precise GPS positioning. BOMAP ensures full compaction of every site.



BOMAG has revolutionized soil compaction with VARIOCONTROL. The drum vibrates linearly instead of in a circular path and amplitude can be adjusted manually or automatically to protect from damage to structures.



The TERRAMETER system provides the technology to allow single drum rollers to become rolling pressure plates, ensuring the proper compaction in earthworks every time.



BOMAG TanGo is used wherever sensitive compaction is required. The TanGo system is in the rear drum, meaning each TanGo machine combines the advantages of conventional vibration and oscillation technology.

## PAVING TECHNOLOGY



With the patented FRAME RAISE system on BOMAG Cedarapids pavers, the flick of a switch lets operators raise and lower the entire rear part of the frame, not just the spreading augers, to adjust the feed height of material and prevent transport damage.



With MAGMALIFE technology, BOMAG BF 200- and BF 300- series pavers have redefined screed heating. With a heat-up time of only 20 minutes, MAGMALIFE offers more consistent temps across the screed and saves time and money.



The award-winning ION DUST SHIELD technology reduces fine dust particles by over 80% when compared to conventional milling. The technology electrically charges fine dust particles, causing them to clump together permanently to create coarse dust, leading to a safer working environment.



BOMAG SMARTRAC on Cedarapids rubber-track pavers maintains proper track tensioning, without over tensioning, to deliver trouble-free operation.



The combined operating console and seat forms a single, adjustable unit on BOMAG SIDEVIEW systems, and it can be shifted left and right for optimum visibility during paving.

## MILLING TECHNOLOGY

### LEARN MORE...

To learn more about the innovative technologies available on most BOMAG products, visit [www.bomag.com](http://www.bomag.com), or better yet, contact your local BOMAG representative for a live product demonstration.

## LIGHT EQUIPMENT

From tampers to trench compactors, rely on the exceptional durability of BOMAG Light Equipment for all your compaction needs.



### TAMPERS

#### BT 50

Working width: 11 in / 3.8 hp / 116 lbs

#### BT 60

Working width: 11 in / 3.8 hp / 128 lbs

*New!* **BT 60 e Electric**

Working width: 11 in / 3.1 hp / 157 lbs

#### BT 65

Working width: 11 in / 3.8 hp / 150 lbs

### SINGLE DIRECTION VIBRATORY PLATES

#### BVP 10/30

Working width: 11.8 in / 2.8 hp / 104 lbs

#### BVP 10/36

Working width: 14.2 in / 3.5 hp / 183 lbs

#### BVP 18/45

Working width: 17.7 in / 4.8 hp / 201 lbs

*New!* **BP 18/45 e Electric**

Working width: 17.7 in / 4.2 hp / 214 lbs

#### BVP 25/50

Working width: 19.7 in / 4.8 hp / 238 lbs

#### BVP 12/50 A

Working width: 19.7 in / 3.5 hp / 159 lbs

### REVERSIBLE VIBRATORY PLATES

#### BPR 25/40

Working width: 15.7 in / 4.8 hp / 298 lbs

#### BPR 35/60

Working width: 23.6 in / 4.8 hp / 452 lbs

#### BPR 45/45 Gas

Working width: 29.5 in / 8.4 hp / 750 lbs

#### BPR 50/55 D

Working width: 29.5 in / 9.0 hp / 882 lbs

#### BPR 60/65 Gas

Working width: 25.6 in / 25.6 hp / 985 lbs

#### BPR 60/65 D

Working width: 25.6 in / 25.6 hp / 1,067 lbs

#### BPR 70/70 D

Working width: 33.5 in / 12.3 hp / 1,279 lbs

### SINGLE AND DOUBLE DRUM VIBRATORY ROLLERS

#### BW 55 E (Single Drum)

Working width: 22 in / 3.4 hp / 331 lbs

#### BW 65 H (Double Drum)

Working width: 25.6 in / 11.0 hp / 1,669 lbs

### MULTI-PURPOSE COMPACTOR

*New!* **BMP 8500**

Working width: 24, 33.5 in / 19.4 hp / 3,516 lbs

A = Asphalt plate / D = Diesel machine / E = Electric start  
H = Hatz engine / e = Electric machine



## TANDEM VIBRATORY ROLLERS

BOMAG is the global leader in compaction technologies. We have been driving the industry with innovations in compaction technology for more than 60 years.

### LIGHT TANDEM < 5 Tons

#### BW 900-50

Working width: 35.4 in / 20 hp / 2,646 lbs

#### BW 80 AD-5, BW 90 AD-5, BW 100 ADM-5

Working width: 31.5, 35.4, 39.4 in / 20.2 hp / 3,417 - 3,527 - 3,748 lbs

#### BW 100 SC-5

Working width: 41.7 in / 20.2 hp / 3,740 lbs

#### BW 100 SL-5, BW 120 SL-5

Working width: 39.4, 47.2 in / 25 hp / 5,181 - 5,512 lbs

#### BW 100 AD-5, BW 120 AD-5

Working width: 39.4, 47.2 in / 33 hp / 5,622 - 6,063 lbs

#### BW 135 AD-5, BW 138 AD-5

Working width: 51.2, 54.3 in / 45.7 hp / 8,929 - 9,921 lbs

### HEAVY TANDEM ARTICULATED STEER 5-16 Tons

#### BW 141 AD-5, BW 151 AD-5

Working width: 59.1, 66.1 in / 74.3 hp / 15,212 - 16,755 lbs

#### BW 154 AD-5

Working width: 66.1 in / 74.3 hp / 18,298 lbs

#### BW 151 AD-5 AM, BW 161 AD-5 AM

Working width: 66.1 in / 74.3, 127 hp / 17,417 - 22,487 lbs

#### BW 161 AD-5, BW 190 AD-5

Working width: 66.1, 78.3 in / 127 hp / 22,046 - 26,566 lbs

#### BW 161 ADO-5, BW 190 ADO-5

Working width: 66.1, 78.3 in / 127 hp / 21,826 - 26,015 lbs

#### BW 191 AD-5, BW 206 AD-5

Working width: 78.7, 84.1 in / 141 hp / 29,763 - 31,085 lbs

#### BW 191 ADO-5, BW 206 ADO-5

Working width: 78.7, 84.1 in / 141 hp / 29,322 - 30,203 lbs

#### BW 191 AD-5 AM, BW 206 AD-5 AM

Working width: 78.7, 84.1 in / 141 hp / 30,644 - 31,967 lbs

### HEAVY TANDEM PIVOT STEER 5-12 Tons

#### BW 174 AP-5

Working width: 59.1, 66.1 in / 74.2, 99.6 hp / 15,653 - 20,724 lbs

#### BW 174 APO-5

Working width: 59.1, 66.1 in / 74.2, 99.6 hp / 16,094 - 21,385 lbs

#### BW 174 AP-5 AM

Working width: 59.1, 66.1 in / 74.2, 99.6 hp / 16,094 - 21,385 lbs

#### BW 174 AP-5 HYBRID

Working width: 66.1 in / 74.2 hp / 21,385 lbs

AD = Asphalt Drum / ADO = Asphalt Drum with Oscillation / ADM = Asphalt Drum Medium / AM = ASPHALT MANAGER / AP = Asphalt Pivot Steer / APO = Asphalt Pivot Steer with Oscillation / SL = Smart Line / AC, ACP = Asphalt Combination



## COMBINATION ROLLERS

Ideal for both repair work and finishing work, BOMAG combination tandem rollers provide easy steering and superior quality.

### BW 90 AC-5

Working width: 35.4 in / 20.2 hp / 3,527 lbs

### BW 100 AC-5

Working width: 39.4 in / 33 hp / 5,291 lbs

### BW 100 ACM-5

Working width: 39.4 in / 20.2 hp / 3,748 lbs

### BW 100 SCC-5

Working width: 39.4 in / 20.2 hp / 3,740 lbs

### BW 120 SLC-5

Working width: 47.2 in / 25 hp / 4,960 lbs

### BW 120 AC-5

Working width: 47.2 in / 33 hp / 5,512 lbs

### BW 138 AC-5

Working width: 54.3 in / 45.7 hp / 9,259 lbs

### BW 151 AC-5, BW 161 AC-5

Working width: 66.1 in / 74.3, 127 hp / 16,535 - 21,385 lbs

### BW 174 ACP-5

Working width: 59.1, 66.1 in / 74.2, 99.6 hp / 16,094 - 19,842 lbs

### BW 174 ACP-5 AM

Working width: 59.1, 66.1 in / 74.2, 99.6 hp / 16,535 - 20,503 lbs

AC = Asphalt Combination / ACM = Asphalt Combination Medium  
 ACP = Asphalt Combination Pivot Steer / AM = ASPHALT MANAGER  
 SLC = Smart Line Combination



## PNEUMATIC TIRE ROLLERS

BOMAG was the first manufacturer to launch a pneumatic tire roller onto the market that combines conventional compaction with a state-of-the-art hydrostatic drive – and that was 25 years ago.

### BW 11 RH-5

Working width: 68 in / 74 hp / 11,464 - 24,251 lbs

### BW 28 RH

Working width: 80.4 in / 134 hp / 18,960 - 61,730 lbs

RH = Pneumatic tire, hydrostatic drive



## SINGLE DRUM ROLLERS

BOMAG Single Drum Rollers are unique because they are more efficient, offer easier servicing and use BOMAG technologies to lower fuel consumption by up to 30 percent.

### SINGLE DRUM ROLLERS <8 Tons

#### BW 124 DH-5, BW 124 PDH-5

Working width: 47.2 in / 46 hp / 7,165 - 7,474 lbs

#### BW 145 D-5, BW 145 DH-5, BW 145 PDH-5

Working width: 56.3 in / 74 hp / 10,472 - 10,626 - 11,177 lbs

#### *New!* BW 177 BVC-5, BW 177 BVO-5 PL

Working width: 66.5 in / 74 hp / 15,432 lbs

#### BW 177 D-5, BW 177 DH-5, BW 177 PDH-5

Working width: 66.5 in / 74 hp / 14,551 - 14,771 - 15,332 lbs

### SINGLE DRUM ROLLERS <15 Tons

#### *New!* BW 211 D-5, BW 211 D-5 SL, BW 211 PD-5

Working width: 83.9 in / 128 - 134 hp / 23,369 - 23,435 - 26,676 lbs

#### BW 211 DH-5, BW 211 PDH-5

Working width: 83.9 in / 128 hp / 24,008 - 27,690 lbs

#### *New!* BW 213 D-5 SL, BW 213 DH-5, BW 213 PDH-5, BW 213 BVC-5

Working width: 83.9 in / 134 - 155 hp / 27,492 - 28,043 - 30,490 - 30,498 lbs

### SINGLE DRUM ROLLERS >16 Tons

#### BW 216 DH-5, BW 216 PDH-5

Working width: 83.9 in / 155 hp / 35,485, 37,700 lbs

#### BW 219 DH-5, BW 219 PDH-5, BW 219 BVC-5

Working width: 83.9 in / 202 hp / 42,770, 44,092, 44,754 lbs

#### BW 226 DH-5, BW 226 PDH-5, BW 226 BVC-5

Working width: 83.9 in / 202 hp / 55,116, 56,747, 57,056 lbs

#### BW 226 DI-5

Working width: 83.9 in / 202 hp / 55,667 lbs

#### BW 226 RC-5

Working width: 83.9 in / 202 hp / 58,982 lbs

BVC = BOMAG VARIOCONTROL / BVO = BOMAG Vibration and Oscillation / D = Smooth Drum  
 DH = Smooth Drum High Gradability / DI = Deep Impact Polygonal Drum / PD = Padfoot Drum  
 PDH = Padfoot Drum High Gradability / RC = Rock Crushing Drum / SL = Smart Line



## COLD PLANERS / MILLS

The BOMAG wide range of cold milling machines are designed for selective milling of lane and ground linings from the widest range of asphalt and concrete compounds.

### BM 500/15-2

Working width: 1 ft 8 in / 143 hp / 16,976 lbs

### BM 600/15-2

Working width: 2 ft / 143 hp / 17,196 lbs

### BM 1000/30

Working width: 3 ft 3 in / 280 hp / 43,431 lbs

### BM 1200/30

Working width: 3 ft 11 in / 280 hp / 44,092 lbs

### BM 1300/30

Working width: 4 ft 3 in / 280 hp / 44,423 lbs

### BM 1000/35-2

Working width: 3 ft 3 in / 350 hp / 52,910 lbs

### BM 1200/35-2

Working width: 3 ft 11 in / 350 hp / 55,115 lbs

### BM 1300/35-2

Working width: 4 ft 3 in / 350 hp / 56,220 lbs

### BM 2000/60

Working width: 6 ft 7 in / 600 hp / 65,765 lbs

### BM 2200/60

Working width: 7 ft 3 in / 600 hp / 66,800 lbs

### BM 2000/65

Working width: 6 ft 6 in / 640 hp / 73,650 lbs

### BM 2200/65

Working width: 7 ft 2 in / 640 hp / 74,520 lbs

### BM 2000/75

Working width: 6 ft 7 in / 771 hp / 76,060 lbs

### BM 2200/75

Working width: 7 ft 3 in / 771 hp / 76,831 lbs

### BM 2500/75

Working width: 8 ft 2 in / 771 hp / 78,150 lbs

## MATERIAL TRANSFER VEHICLES



Mat quality is of the utmost importance on a jobsite and can be negatively affected by the traditional stop-and-go paving practices. With the MS 2 for jobs that need a windrow pick up or the BMF 2500 as a traditional transfer vehicle, BOMAG offers a material transfer vehicle that is fit for the job.

### MS 2 MTV

Working width: 60 in / 121 hp / 14,500 lbs

### *New!* BMF 2500

Hopper capacity: 16.5 tons / 225 hp / 44,923 lbs



## PAVERS

Regardless of class and whether track or wheel versions, the BOMAG line of pavers draws on a half century of engineering experience in the paving industry. Our experience means every machine leaves the factory with the highest possible level of reliability.

### BF 200 C-2

Working width: 3 ft 7 in - 6 ft 7 in, 11 ft 2 in max / 74 hp / 13,228 lb  
Cap: 5 ton

### BF 300 C-2

Working width: 5 ft 7 in - 11 ft 2 in, 16 ft 5 in max / 74 hp / 22,707 lbs  
Cap: 9 ton

### CR 820 W

Working width: 8 - 16 ft, 20 ft max / 60 hp / 36,500 lbs / Cap: 10 ton

### *New!* CR 1030 T-2 with VERSA 20

Working width: 10 - 19 ft, 23 ft max / 225 hp / 45,100 lbs / Cap: 14 ton

### CR 1030 W

Working width: 10 - 20 ft, 30 ft max / 260 hp / 37,800 lbs / Cap: 16.7 ton

T / C = Track paver W / P = Wheeled paver



## *New!* ASPHALT DISTRIBUTORS AND CHIP SPREADERS

BOMAG expands our extensive line of asphalt solutions. Introducing the Asphalt Distributors and the combination Asphalt Distributor/Chip Spreader.

### BD 1000 Asphalt Distributor

Maximum spraying width: 15.7 ft / Cap: 1,000 gallons / 26,000 lbs

### BD 2000 Asphalt Distributor

Maximum spraying width: 15.7 ft / Cap: 2,000 gallons / 33,000 lbs

### BD 1300 CS Combination Distributor/Chip Spreader

Binder tank cap: 1,300 gallons / Aggregate storage bin cap: 12 tons

### BD 2400 CS Combination Distributor/Chip Spreader

Binder tank cap: 2,400 gallons / Aggregate storage bin cap: 16.5 tons

BD = BOMAG Distributor / CS = Chip Spreader



## LANDFILL COMPACTORS

BOMAG sets the bar for landfill compactors. Our machines offer the best combination of power, reliability, versatility, value retention and cost-efficiency. And now most of our landfill compactors come with a Cummins engine.

### LANDFILL COMPACTORS < 26 Tons

#### BC 473 RB-5, BC 573 RB-5

Working width: 142 in / 281 hp / 57,320 - 62,391 lbs

#### BC 473 RS-5

Working width: 126 in / 281 hp / 56,659 lbs

### LANDFILL COMPACTORS < 37 Tons

#### BC 673 RB-5 (Cummins) *New!*

Working width: 150 in / 456 hp / 74,296 lbs

#### BC 773 RB-5 (Cummins) *New!*

Working width: 150 in / 456 hp / 82,233 lbs

#### BC 773 RS-5 (Cummins) *New!*

Working width: 150 in / 456 hp / 80,249 lbs

### LANDFILL COMPACTORS < 56 Tons

#### BC 873 RB-5 (Cummins)

Working width: 205 in / 456 hp / 91,933 lbs

#### BC 973 RB-5 (Cummins)

Working width: 205 in / 576 hp / 105,602 lbs

#### BC 1173 RB-5 (Cummins)

Working width: 205 in / 576hp / 124,782 lbs

RB = Refuse Compactor with Blade / RS = Refuse Compactor with Shovel



## RECYCLER / SOIL STABILIZERS

BOMAG soil stabilizers and recyclers handle every construction site to perfection. Our unique product range is designed for varied fields of application such as crushing asphalt, soil stabilization, or cold recycling.

#### RS 360

Working width: 79 in / 350 hp / 39,000 lbs / Cutting depth 12 in

#### RS 460

Working width: 96 in / 456 hp / 53,581 lbs / Cutting depth 19.7 in

#### RS 650

Working width: 94.5, 102.3 in / 653 hp / 61,509 lbs /

Cutting depth 23.62 in



## SOIL COMPACTORS

The BOMAG goal is to provide equipment that improves efficiency and comfort for our customers. With the new generation of soil compactors, BOMAG has created machines that set new standards in soil compaction.

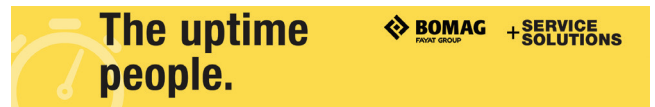
#### BC 473 EB-5

Working width: 142 in / 281 hp / 57,320 lbs

#### BC 773 EB-5 (Cummins) *New!*

Working width: 150 in / 456 hp / 80,800 lbs

EB = Embankment Blade



The BOMAG Service + Solutions UPTIME Team is here to assist you with everything that you need to keep your BOMAG machinery up and running at its best for years to come.

We offer:

- Service Kits that feature Genuine BOMAG Parts
- Knowledgeable Service Engineers both in the field and on the phone
- Dedicated representative for warranty claims and questions
- Genuine Parts stocked in our U.S. facility for quick delivery



For more information, call us or visit [www.bomag.com/us-en/services/](http://www.bomag.com/us-en/services/)

**www.bomag.com**

**BOMAG Americas, Inc.**

125 Blue Granite Parkway  
Ridgeway SC 29130  
U.S.A.  
Tel. +1 803 337 0700  
Fax +1 803 337 0800  
usa@bomag.com

Head Office / Hauptsitz:

**BOMAG**

Hellerwald  
56154 Boppard  
GERMANY  
Tel. +49 6742 100-0  
Fax +49 6742 3090  
info@bomag.com

**BOMAG Facilities and Offices Around the World**

**BOMAG Maschinen-  
handels-gesellschaft m.b.H.**

Klausenweg 654  
2534 Alland  
AUSTRIA  
Tel. +43 2258 20202  
Fax +43 2258 20202-20  
austria@bomag.com

**BOMAG France S.A.S.**

2, avenue du Général de Gaulle  
91170 Viry-Châtillon  
FRANCE  
Tel. +33 1 69578600  
Fax +33 1 69962660  
france@bomag.com

**BOMAG MARINI EQUIPAMENTOS LTDA.**

Avenida Clemente Cifali,530  
Distrito Industrial Ritter  
Cachoeirinha – RS  
BRAZIL  
94935-225  
Tel. +55 51 2125-6642  
Fax +55 51 3470-6220  
brasil@bomag.com

**BOMAG (GREAT BRITAIN), LTD.**

Sheldon Way  
Larkfield, Aylesford  
Kent ME20 6SE  
GREAT BRITAIN  
Tel. +44 1622 716611  
Fax +44 1622 710233  
gb@bomag.com

**BOMAG (CANADA), INC.**

2233 Argenta Road, East Tower  
Suites 302  
Mississauga, ON L5N 2X7  
CANADA  
Tel. +1 800 782 6624  
Fax +1 905 361 9962  
canada@bomag.com

**BOMAG Italia Srl.**

Via Roma 50  
48011 Alfonsine  
ITALY  
Tel. +39 0544 864235  
Fax +39 0544 864367  
italy@bomag.com

**BOMAG (CHINA)**

Compaction Machinery Co. Ltd.  
No. 2808 West Huancheng Road  
Shanghai Comprehensive  
Industrial Zone (Fengxian)  
Shanghai 201401  
CHINA  
Tel. +86 21 33655566  
Fax +86 21 33655508  
china@bomag.com

**FAYAT BOMAG Polska Sp. z o.o.**

Ul. Szyszkowa 52  
02-285 Warszawa  
POLAND  
Tel. +48 22 482 04 00  
Fax +48 22 482 04 01  
poland@bomag.com

**BOMAG India Pvt Ltd**

Unit No 614, B Wing, 6th Floor  
Kanakia Wall Street  
Chakala Andheri Kurla Road Andheri East  
Mumbai 400 093 Maharashtra  
INDIA  
india@bomag.com

**BOMAG GmbH**

300 Beach Road  
The Concourse, #18-06  
Singapore 199555  
SINGAPORE  
Tel. +65 6 294 1277  
Fax +65 6 294 1377  
singapore@bomag.com



©2025 BOMAG Americas, Inc. all rights reserved. 012025  
In the interest of continual equipment development, BOMAG Americas, Inc. reserves  
the right to change these specifications at any time without prior notification.