

2021 CONTRACTORS' TOP 50 NEW PRODUCTS

Here are your picks for construction's
industry-leading new products.



In this industry exclusive awards program, equipment owners and end users determine the winners.

The Contractors' Top 50 New Products showcases new equipment and products that the construction industry has identified as the most intriguing of the year. Recipients are based on page views and inquiries on ForConstructionPros.com on new units featured in Equipment Today over a full-year period — extended to 14 months for 2021 due to the pandemic. The winning products shown represent the highest-ranking product for each manufacturer over the specified time frame.

NEXT PAGE →



Bobcat

L23 and L28 Small Articulated Loaders

The 3,790-lb., 25-hp L23 and 3,740-lb. L28 small articulated loaders offer rated operating capacities of up to 1,395 and 1,534 lbs., tip capacities up to 2,789 and 3,068 lbs. and lift heights of 85.4 and 104.3 in. The telescoping lift arm includes a dual-cylinder design that keeps the load level as the bucket is moved. The units are able to fit into backyards and their tight-turning articulation and light overall footprint limit cuts or tears on surfaces when turning or hauling a load. Two traction modes are automatically enabled based on operation. High-traction mode provides optimal control and mobility over rough or slippery terrain, while turf-safe mode keeps the wheels from scrubbing on the ground while actively steering. Fingertip auxiliary or telescopic controls facilitate quick, simple operation.

www.forconstructionpros.com/21121369

To learn more about this year's recipients, use the URLs shown or turn to www.ForConstructionPros.com/21591063 to access the full list of award winners with direct links to each enhanced product listing.



Case

Enhanced G Series Wheel Loaders

The G Series wheel loaders now include a Smart Power Mode that improves communication between the engine and transmission based on workload. A new touchscreen display provides tablet-like performance for accessing all critical machine settings and operational data. Adjustable electrohydraulic controls allow the operator to independently set lift (boom) and tilt (bucket) responsiveness to match operator preference and loading situations. Electrohydraulic parallel lift functionality assists in material retention and smooth loading. The all-new payload system is integrated directly into the primary display and provides bucket weight, pass counts, accumulated/running weight, job tracking data and more.

www.forconstructionpros.com/12291465

To learn more about this year's recipients, use the URLs shown or turn to www.ForConstructionPros.com/21591063 to access the Full list of award winners with direct links to each enhanced product listing.



Roadtec SB-3000 Material Transfer Vehicle

Powered by a 310-hp Cummins QSB6.7 Stage 5 engine, the SB-3000 Shuttle Buggy has 25 tons of storage in the main hopper and can hold more than 30 tons of material to help maintain nonstop paving and remixing. Its triple pitch auger remixes across the entire width of the hopper, continuously blending and yielding a consistent mix. Adaptive cruise control allows a set distance between the material transfer vehicle and paver to be automatically maintained. The main operator is positioned closer to the action while maintaining optimal sight lines, and the ground operator is protected inside the structure of the machine. Other features include four-wheel steer, a tight turning radius, hydraulically powered chain tensioning, ground-level maintenance access, bright lighting and backup cameras.

www.forconstructionpros.com/21108856

To learn more about this year's recipients, use the URLs shown or turn to www.ForConstructionPros.com/21591063 to access the full list of award winners with direct links to each enhanced product listing.



Wirtgen

W 220 Fi and W 250 Fi Large Milling Machines

The 801-hp W 220 Fi and 1,010-hp W 250 Fi milling machines have a maximum milling depth of 14 in., and can serve a range of applications from surface course rehabilitation and fine milling work to complete surface removal. Various drive concepts are available to ensure maximum and optimal milling performance. The Mill Assist standard assistance system automatically controls the two-speed Dual Shift powershift transmission when in automatic mode. In combination with the diesel engine, milling drum speeds can be increased or decreased to meet application demands. Wirtgen Performance Tracker (WPT) calculates precise surface milling performance, milling volume and consumption values and displays it on the operator's platform in real time.

www.forconstructionpros.com/21108870

To learn more about this year's recipients, use the URLs shown or turn to www.ForConstructionPros.com/21591063 to access the Full list of award winners with direct links to each enhanced product listing.



Kenco

Slab Crab with Serrated Teeth

Kenco's Slab Crab is a unique pavement removal bucket that now incorporates serrated teeth to prevent slabs from sliding or shifting during the removal process. The smooth lower jaw allows the operator to release the slab in the desired location. Models are available in bucket widths from 36 to 54 in. Standard models are manufactured to process slabs ranging from 4 to 12 in. thick and to fit 40,000- to 150,000-lb. excavators. Models are also available in sizes to fit backhoe-loaders. Custom versions can be fabricated to accept larger slab thicknesses. The units are offered as a direct pin-on or attach with the WedgeBolt Coupler System.

www.forconstructionpros.com/21110190

To learn more about this year's recipients, use the URLs shown or turn to www.ForConstructionPros.com/21591063 to access the full list of award winners with direct links to each enhanced product listing.



Mack

MD Series Medium-duty Trucks

The Mack MD Series of medium-duty trucks includes the MD6, a Class 6 model with a GVWR of 25,995 lbs., and the MD7, a Class 7 model with a GVWR of 33,000 lbs. The MD6 does not require a CDL to operate for non-hazardous payloads. Built specifically for medium-duty vocational applications, the models are available in 4x2 configurations, and feature a sharp wheel cut for enhanced maneuverability for tough urban settings. They vary in wheelbase size and dimensions, with transmission options for heavier-duty applications and rougher terrains. The cab design features a short bumper-to-back-of-cab (BBC) measurement of 103 in. The cab interior offers power steering, a tilt telescopic steering column, air suspension driver's seat and controls within easy reach.

www.forconstructionpros.com/21113178

To learn more about this year's recipients, use the URLs shown or turn to www.ForConstructionPros.com/21591063 to access the full list of award winners with direct links to each enhanced product listing.



Vacuworx PHD Portable Vacuum System

The PHD vacuum lifting system weighs just 25 lbs. yet makes easy work of handling materials up to 2,500 lbs. Simply connect the PHD and Below-the-Hook Basket attachment to a boom, bucket or crane using a clevis hook and it's ready to lift concrete, marble, granite, stone, metal, steel, iron and more. A wide selection of mounting assemblies facilitate its use on mini skid steers, compact excavators, forklifts, small cranes and demolition robots. Smart features include a remote control, lithium battery and dual pump design. The dual-stage vacuum pumps build vacuum faster and release it more efficiently to increase productivity. The 12V 30-amp/hour rechargeable LFP (Lithium Iron Phosphate) battery provides longer run time and overall battery life.

www.forconstructionpros.com/21113999

To learn more about this year's recipients, use the URLs shown or turn to www.ForConstructionPros.com/21591063 to access the full list of award winners with direct links to each enhanced product listing.



TyBot

Autonomous Rebar-tying Robot

The TyBot autonomous rebar tying robot has been deemed construction's most advanced rebar installation equipment. Featuring autonomous navigation of the working area with no pre-mapping, programming or calibration required, it is working on the jobsite within an hour of arrival and continuously identifies and ties up to 1,100 rebar intersections per hour. Operating day or night, rain or shine, the system substantially enhances workforce productivity, reduces schedule risk and increases capacity to perform more work while keeping crews safer. It is available as a leased option staffed with a trained and dedicated quality control technician.

www.forconstructionpros.com/21114729

To learn more about this year's recipients, use the URLs shown or turn to www.ForConstructionPros.com/21591063 to access the full list of award winners with direct links to each enhanced product listing.



LeeBoy 8530 Asphalt Paver

The 8530 asphalt paver has a 125-hp turbocharged engine, enhanced cooling systems, independent hopper wings, reversible augers and conveyors, material cut-offs that automatically close in reverse and quick-change auger assemblies. Its 4,150-lb. Legend HD PRO Screed has heavy-duty flight screws, a heavy-duty crown and valley mechanism, angle-of-attack adjuster with vertical height adjustment, sloping screed extensions and pre-strike-off adjustment. The stylish operator platform and low-profile hood line provide heightened visibility with no line-of-sight disruption. Dual operator control platforms come with multi-position, pivoting seats. An actuator-driven hood lift, front conveyor chain adjustments, auger single lube system and ground-level access points promote ease of service.

www.forconstructionpros.com/21115855



To learn more about this year's recipients, use the URLs shown or turn to www.ForConstructionPros.com/21591063 to access the full list of award winners with direct links to each enhanced product listing.



JCB 2TS-7T Teleskid

The 9,914-lb. 2TS-7T Teleskid is built on a small-platform skid-steer chassis that allows it to deliver the lift height, forward reach and digging benefits of the 3TS-8T and 3TS-8W in a more compact, easily transportable platform. It delivers a rated operating capacity of 2,096 lbs. with the Powerboom retracted and 1,140 lbs. with it fully extended; a maximum lift height of 11 ft. 10 in.; forward reach of 7 ft.; and the ability to dig 2 ft. below grade. Its Smoothride System allows for greater load retention and operator comfort. The 74-hp JCB by Kohler Tier 4 Final engine does not require diesel exhaust fluid, a diesel particulate filter (DPF) or other exhaust aftertreatment. The unit has a standard hydraulic flow rate of 18.6 gpm with optional high-flow rate of 29.4 gpm.

www.forconstructionpros.com/21116215

To learn more about this year's recipients, use the URLs shown or turn to www.ForConstructionPros.com/21591063 to access the full list of award winners with direct links to each enhanced product listing.



Weiler

P395 Commercial Asphalt Paver

The P395 asphalt paver incorporates proven designs with new features to provide optimal performance, reliability and mat quality in a range of applications. Its 4,400-lb., 7-ft. 8-in. front mount screed is hydraulically extendable to 15 ft. 4 in. The 96-in. track length with 74 in. of ground contact and 140-mm track chain pitch provide a smooth ride and enhanced flotation. Automatic track tensioning ensures performance and maximizes component life. Swing-out consoles provide greater visibility, while the adjustable, magnetic-resistance intelligent steering system allows for reliable control. A joystick allows for automatic functions. Highway-class chains, conveyor and auger bearings provide long-term reliability.

www.forconstructionpros.com/21119006



To learn more about this year's recipients, use the URLs shown or turn to www.ForConstructionPros.com/21591063 to access the full list of award winners with direct links to each enhanced product listing.



Dynapac S100 Mix Spreader

Suited for use in relatively small and tight spaces, the self-propelled S100 Mix Spreader has a 40-gal. hopper capacity yet fits in the back of a pickup truck. It can be used as a chip spreader when in forward and a paver when in reverse. The unit is designed for working widths from 10 to 40 in. and thicknesses up to 4 in. It features three-step flow regulation to allow control of the amount of material being laid, and adjustable hydraulic cylinders that can be controlled independently from the handle to help regulate mat height. Front and reverse drive functionality avoids the need to physically push heavy loads. Two hydrostatically driven wheels and a swivel caster wheel allow for even easier maneuvering. Power is provided by a Honda GXV 160 gas engine.

www.forconstructionpros.com/21120862



To learn more about this year's recipients, use the URLs shown or turn to www.ForConstructionPros.com/21591063 to access the Full list of award winners with direct links to each enhanced product listing.



Minnich **A-4SCW Dowel Pin Drill with i-QAN System**

The A-4SCW on-slab self-propelled wireless dowel pin drill features the I-QAN remote communication system, which offers maximum drilling efficiency and uptime via drill monitoring, diagnostics and remote access to Minnich field support via an iPad tablet, iPhone or Android device. The system runs on 24-volt power for compatibility with most large air compressors. The drill unit has a service weight of 3,260 lbs. and a maximum hole depth of 18 in. Its drills automatically retract and shut off when the hole depth has been reached. A remote control with joystick controls speed, steering and direction of travel. It also features a dust collection on/off switch. A magnetic feed sensor prevents the drill from traveling if the slider is not completely retracted due to the drill steel becoming stuck in the concrete.

www.forconstructionpros.com/21121079

To learn more about this year's recipients, use the URLs shown or turn to www.ForConstructionPros.com/21591063 to access the full list of award winners with direct links to each enhanced product listing.



John Deere 700L and 750L Dozers

Addressing the needs of the modern operator, the 700L and 750L dozers feature improvements to productivity, reliability and operator comfort. Inspired by customer feedback, updates include an all-new operator station, increased power levels, low-effort electrohydraulic controls and a suite of factory grade control solutions. Both models deliver more power via 135- and 175-hp John Deere six-cylinder, 6.8-liter diesel engines. They can also be equipped with Slope Control, a factory-installed offering that automatically maintains the blade angle without the need for an external laser or GPS reference. Slope Control machines are also SmartGrade-ready, creating an easy upgrade path to a full 3D mastless system in the field. New, wider blade options are also available, including a 161-in. option.

www.forconstructionpros.com/21122406



To learn more about this year's recipients, use the URLs shown or turn to www.ForConstructionPros.com/21591063 to access the full list of award winners with direct links to each enhanced product listing.



Wacker Neuson ET42 Excavator

The 4.2-ton ET42 excavator has a revised low-profile hood design and side window glass expanded down to the lower portion of the cab to provide added visibility to the front of both tracks. Large windows and the offset boom provide a complete view of the boom, attachment and the working area. A three-point bucket linkage offers a 200° angle of rotation that combines optimal breakout force with a greater range of motion and greater vertical digging depth. Dual flange rollers in the undercarriage improve stability and provide a smoother ride with less vibration. The unit comes in cab or canopy models with LED working lights and optional angle blade or redesigned Vertical Digging System (VDS). Cab models include standard air conditioning, a four-position windshield design, 3.5-in. color display and more. windshield design, 3.5-in. color display and more.

www.forconstructionpros.com/21123349

To learn more about this year's recipients, use the URLs shown or turn to www.ForConstructionPros.com/21591063 to access the full list of award winners with direct links to each enhanced product listing.



Toro **e-Dingo 500 Compact Utility Loader**

The e-Dingo 500 has all the benefits and power of a standard compact utility loader with no fuel costs. Suited for indoor applications, the unit is powered by lithium-ion battery technology that emits zero engine exhaust emissions. It has a maximum operating capacity of 515 lbs., is compatible with several existing Dingo attachments and features the 4-Paw independent four-wheel-drive system and true spin-turn performance. The Auto Idle feature automatically conserves energy by powering off the motor after being idle for a certain amount of time. The machine also shifts to low idle after 5 seconds of non-use and shuts off when not in use for over 30 seconds. The operator can instantly restart the machine by double-tapping the traction control lever.

www.forconstructionpros.com/21123625



To learn more about this year's recipients, use the URLs shown or turn to www.ForConstructionPros.com/21591063 to access the Full list of award winners with direct links to each enhanced product listing.


JLG

670SJ Self-leveling Boom Lift

JLG engineers realized that the industry as a whole had designed current lifts for the near ideal conditions of firm, flat surfaces with a grade of 5° or less. So, they came up with the 670SJ self-leveling boom, which automatically levels on grades up to 10° when in self-leveling mode. This allows operators to traverse uneven ground with full functionality while driving at height, plus reduces setup time and/or repositioning, decreases platform movement during travel and improves traction capability on sloped ground. The lift can also be operated in standard or shipping mode. It has a 67-ft. platform height, a 550-lb. unrestricted/750-lb. restricted capacity, 45% gradeability and a 57-ft. 1-in. horizontal reach. It takes just 101 seconds to elevate to full height or back to ground level from full height.

www.forconstructionpros.com/21124286



To learn more about this year's recipients, use the URLs shown or turn to www.ForConstructionPros.com/21591063 to access the full list of award winners with direct links to each enhanced product listing.



Liebherr R 938 Crawler Excavator

Part of the Generation 8 series, the 85,770-lb. R 938 excavator has a 299-hp Tier 4 Final diesel engine and provides a 24-ft. 11-in. maximum dig depth, 36-ft. 8-in. maximum reach at ground level and up to 53,510 lbs. of breakout force. It is available with a variety of X-shaped, lubricated-for-life undercarriage types and track rollers. Its spacious, temperature-controlled cab features pneumatic seats with vertical and longitudinal suspension, a high-resolution, user-friendly, 7-in. touchscreen and a windshield that can be fully lowered. The unobstructed panoramic cab view and rear and side monitoring cameras maximize safety. Engine oil, hydraulic oil, fuel and urea levels can be monitored via the touchscreen. Available lighting packages include a high-performance LED+ lighting option.

www.forconstructionpros.com/21124649

To learn more about this year's recipients, use the URLs shown or turn to www.ForConstructionPros.com/21591063 to access the full list of award winners with direct links to each enhanced product listing.



Level Best Precision Grader Blade

The GB108 Precision Grader Blade has a 108-in.-wide rugged blade that adjusts in four directions and works with all makes of 2D and

3D guidance systems, including GPS and robotic total station (RTS) systems, as well as manually. Designed to fit all popular makes of compact track loaders, the attachment enables high-precision grading of sub-surfaces to within 0.1 in. of spec. It offers eight-way blade adjustment, a reversible cutting edge and an oscillating front axle to stabilize operation. Other features include foam-filled tires, a powder-coated finish, convex mirrors for visibility to the material, a proportional hydraulic valve and hoses with flat-face couplers.

www.forconstructionpros.com/21124713



To learn more about this year's recipients, use the URLs shown or turn to www.ForConstructionPros.com/21591063 to access the full list of award winners with direct links to each enhanced product listing.



Hitachi ZW220-6 Mid-size Wheel Loader

The 38,910-lb. ZW220-6 mid-size wheel loader has a 200-hp Cummins Tier 4 Final, no-DPF engine and delivers 34,170 lbs. of breakout force. The heaped bucket capacity is 4.2 to 4.7 cu. yds., with loading heights up to 13.5 ft. Parallel tilt & lift movement smooths out digging operations and the Tandem function prioritizes the bucket while dumping. The Power Mode switch puts a 10% burst in engine rpm for immediate access to extra acceleration, rimpull and breakout force. The unit includes an automatic return-to-dig function, auto shutdown feature, auto power-up, ride control, telematics and an operator-friendly LCD color monitor. The optional E-Stick steering system with electric control over a hydraulically controlled joystick is controlled by a fingertip lever mounted just in front of the armrest.

www.forconstructionpros.com/21126522

To learn more about this year's recipients, use the URLs shown or turn to www.ForConstructionPros.com/21591063 to access the full list of award winners with direct links to each enhanced product listing.



Chevron

Delo 600 ADF with OMNIMAX

Chevron Delo 600 ADF with OMNIMAX heavy-duty engine oil delivers system protection to the engine and emissions system.

Formulated to 0.4% sulfated ash, it helps reduce the rate of diesel particulate filter (DPF) clogging to deliver extended DPF service life (up to 2.5 times) and 3% fuel economy retention. The oil is recommended for Tier 4 Final and 2017 greenhouse gas-compliant, naturally aspirated and turbocharged four-stroke diesel engines in which the API CK-4 service category and 15W-40 viscosity grade are recommended. Available in 15W-40 and 10W-30 ratings, it delivers optimal oxidation stability, enhanced valvetrain wear protection and piston deposit performance and the opportunity to extend engine oil drain intervals.

www.forconstructionpros.com/21127785

To learn more about this year's recipients, use the URLs shown or turn to www.ForConstructionPros.com/21591063 to access the full list of award winners with direct links to each enhanced product listing.



Kenworth T880S with Optional Fixed Grille

The T880S is offered with a set-forward front axle ranging from 14,600 to 22,800 lbs.,

and is standard with the PACCAR MX-13 engine with up to 510 hp and 1,850 lbs.-ft. of torque. For weight-sensitive applications, the 10.8-liter PACCAR MX-11 engine is 400 lbs. lighter than larger displacement engines, and provides up to 430 hp and 1,650 lbs.-ft. of torque. A radiator-mounted grille is now available for the T880S equipped with the 114-in. BBC short hood. This option allows the hood to be opened in applications where equipment is mounted to the front of the truck, including applications such as snowplows, cranes, vacuum trucks and more.

www.forconstructionpros.com/21129405

To learn more about this year's recipients, use the URLs shown or turn to www.ForConstructionPros.com/21591063 to access the full list of award winners with direct links to each enhanced product listing.



Yanmar SV40 Compact Excavator

The 9,206-lb. SV40 ultra-tight tailswing compact excavator is tailored for the North American market and designed to give operators the flexibility, stability and performance of a 5-ton machine without the need for a CDL. It features a 39-hp Yanmar electronically controlled, Tier 4 Final diesel engine and VIO progressive three-pump hydraulic system (VIPPS). It delivers a digging depth of 11 ft. 3 in. Available in cab or canopy, the unit comes standard with the SMARTASSIST remote communication system, ECO Mode, Auto-Decel Mode, backfill blade lever-controlled with float position, two-speed operation and an LCD monitor. It also features a standard hydraulic quick coupler. Options include a second PTO function, four- or six-way blade and an additional counterweight.

www.forconstructionpros.com/21131888

To learn more about this year's recipients, use the URLs shown or turn to www.ForConstructionPros.com/21591063 to access the full list of award winners with direct links to each enhanced product listing.



KOVACO

Elise 900 Electric Skid-steer Loader

The Elise 900 Electric skid-steer loader uses three electric motors, two of which are used for travel and one for the hydraulic system only. The standard battery provides a run time of two to eight hours under load depending on application. Upgrading to a 400Ah battery will increase working time 30% to 40% and increase the standard 1,948-lb. rated operating capacity to 3,000 lbs. The low-maintenance unit has a boom height of 11.8 ft., enhanced chassis clearance, an ergonomic design and can be controlled remotely via a mobile app. It offers a side tilt of 47° and a self-leveling platform. The vertical and horizontal shovel alignment function makes it easy to operate. A planetary gearbox in each wheel reduces electric motor speed. Maximum loader speed is 8.2 mph.

www.forconstructionpros.com/21133219

To learn more about this year's recipients, use the URLs shown or turn to www.ForConstructionPros.com/21591063 to access the Full list of award winners with direct links to each enhanced product listing.



Kobelco

SK140SRLC-7 SR Series Excavator

The 32,800-lb. SK140SRLC-7 SR Series excavator offers full-size benefits with short rear swing capabilities and enhanced features. It delivers a 19-ft. 7-in. digging depth and digging force of 24,800 lbf. The Tier 4 Final diesel engine increases power output to 105 net hp at 2,200 rpm. The unit features an attachment selection system with adjustable flow rate presets for bucket, breaker, nibbler and thumb, as well as independent travel to move, lift and swing simultaneously without loss of power. Other features include an optional offset boom, built-in rear, left- and right-side safety camera system with customizable split-screen display, 10-in. color monitor with easy to operate menu screen and jog dial integrating multiple functions into a single interface.

www.forconstructionpros.com/21134030

To learn more about this year's recipients, use the URLs shown or turn to www.ForConstructionPros.com/21591063 to access the full list of award winners with direct links to each enhanced product listing.



Merlo Roto 70.28 S Plus Telehandler

The Merlo Roto 70.28 S Plus rotating turret telehandler has a maximum operating capacity of 15,400 lbs. with a maximum lift height of 92 ft. Its 20° tilting cab supplements 360° visibility with over 46 sq. ft. of glass surface. The unit includes a 170-hp Iveco four-cylinder engine and hydrostatic transmission with electronic Eco Power Drive control and three steering modes. Four independent, multi-positional stabilizers can be individually deployed for precise placement on tight jobsites. The automatic load management system displays operating and safety parameters in real time on a large, highly visible LCD. Other features include load-sensing, flow-sharing hydraulics, an active suspension system, spacious, ergonomic command center and more.

www.forconstructionpros.com/21135196



To learn more about this year's recipients, use the URLs shown or turn to www.ForConstructionPros.com/21591063 to access the full list of award winners with direct links to each enhanced product listing.



Kato HD512LC-7 and HD514MR-7 Hydraulic Excavators

The 28,429-lb. HD512LC-7 standard radius and 31,085-lb. HD514MR-7 mini radius hydraulic excavators feature REGZAM 7th generation technology. They provide maximum digging depths of 18 ft. 4 in. and 18 ft. 2 in. and maximum reach of 27 ft. 3 in. and 27 ft. 9 in., with a bucket digging force of 21,123 lbs. or up to 22,031 lbs. at high power. Both models are powered

by a 105-hp Isuzu Tier 4 Final diesel engine and have a 73-gal. fuel tank. They include a quick-response four-pump hydraulic system with dual auxiliary hydraulics. The ROPS/TOPS/FOPS pressurized cabin has centralized switches, a 7-in. LCD color touchscreen monitor with standard side and rear camera feature and retractable windshield. Large covers and a large-capacity tool box enable ease of service.

www.forconstructionpros.com/21135896



To learn more about this year's recipients, use the URLs shown or turn to www.ForConstructionPros.com/21591063 to access the full list of award winners with direct links to each enhanced product listing.



Sunward Excavator Line

Sunward excavators cover a full range of sizes to suit user needs, from the 4,145-lb., 18-hp SWE-18UF to the 78,400-lb., 338-hp SWE-365F. Maximum digging depths extend from 7 ft. 3 in. to 24 ft. 6 in. with maximum reach at ground level ranging from 12 ft. 11 in. to 37 ft. 2 in. Large models include a heavy hydraulic system, strong swing and rotation system, power traveling system and a stable and reliable chassis. All models are designed to provide optimal performance, comfortable operation, convenient maintenance and an overall product quality that is robust, powerful, versatile in application and cost effective.

www.forconstructionpros.com/21135902

To learn more about this year's recipients, use the URLs shown or turn to www.ForConstructionPros.com/21591063 to access the full list of award winners with direct links to each enhanced product listing.



Takeuchi TB370 Compact Hydraulic Excavator

The 14,793-lb. TB370 has a 56.8-hp Kubota V2607-CR-TE5B turbocharged, Tier 4 Final diesel engine with 157 ft.-lbs. of torque, enabling the compact machine to tackle the toughest jobs. It offers a dig depth of 13 ft. 4.8 in., maximum reach of 21 ft. 11.3 in. and bucket breakout force of 14,613 lbs. Inside its spacious cab is an automotive-styled interior with 8-in. color LCD multifunction touchscreen display, jog dial and one-touch controls. The Takeuchi Fleet Management (TFM) telematics system makes remote monitoring possible. Three standard auxiliary circuits (including a high-flow primary circuit) improve the unit's versatility and enable the operator to run a variety of attachments. The load-sensing hydraulic system provides over 31 gpm of auxiliary hydraulic flow.

www.forconstructionpros.com/21195442

To learn more about this year's recipients, use the URLs shown or turn to www.ForConstructionPros.com/21591063 to access the full list of award winners with direct links to each enhanced product listing.



Volvo

ECR25 Electric Excavator

The ECR25 electric excavator is fitted with lithium-ion batteries and one electric motor that powers the hydraulics. It generates zero exhaust emissions and significantly lower noise levels, reduced energy costs, improved efficiency and fewer maintenance requirements compared with its conventional diesel counterparts, while providing comparable performance levels. It has a digging depth of 9 ft. and breakout force of 5,020 lbf. The batteries store enough electric energy to power the machine for up to eight hours in its most common applications. Onboard chargers enable overnight charging adaptable to conventional household electrical systems, or an off-board fast charger can be used with a three-phase outlet to achieve 80% power within one hour.

www.forconstructionpros.com/21198046

To learn more about this year's recipients, use the URLs shown or turn to www.ForConstructionPros.com/21591063 to access the full list of award winners with direct links to each enhanced product listing.

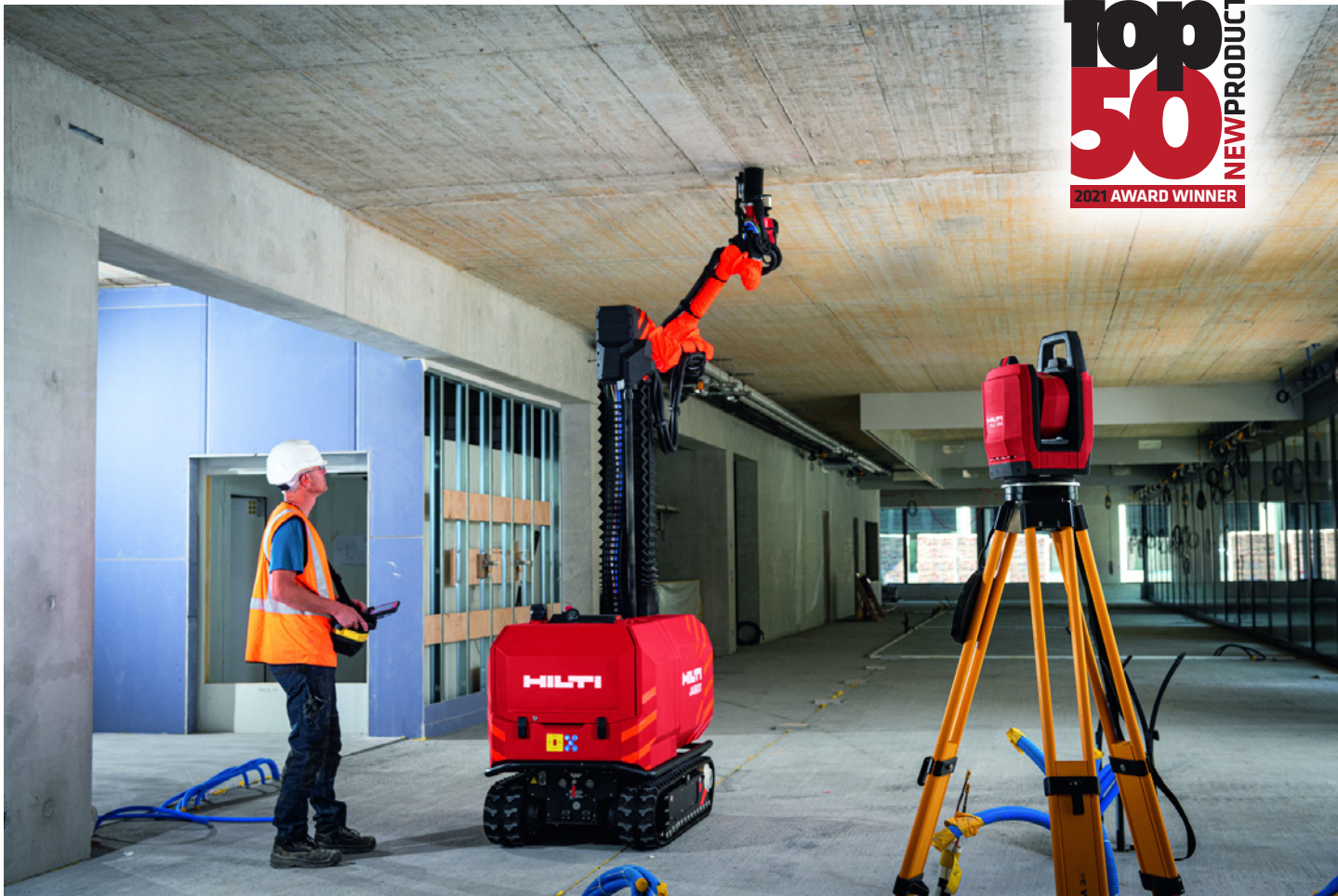


Western Star 49X Class 8 Truck

The 49X features a stronger, lighter chassis and a purpose-built X-series reinforced aluminum cab that offers more space yet provides added weight savings. Single-channel frame rails come in a variety of thicknesses and ratings up to 3.7 million RBMs, or C-channel frame reinforcements are offered in RBMs up to 5.4 million. Clear back-of-cab packaging allows for easier upfits and accommodates a full array of rear suspension options. The sloped hood is constructed of high-strength, lightweight, molded composite and features the ISO Tech Hood Suspension system, which isolates, absorbs and dissipates vibrations from the chassis. The vehicle is available with a Detroit DD15 Gen 5 or DD16 engine mated to the DT12 Vocational series of automated manual transmissions.

www.forconstructionpros.com/21198110

To learn more about this year's recipients, use the URLs shown or turn to www.ForConstructionPros.com/21591063 to access the full list of award winners with direct links to each enhanced product listing.



Hilti Jaibot Construction Robot

The Jaibot semi-autonomous mobile construction robot is designed to help mechanical, electrical and plumbing (MEP) installation contractors tackle productivity, safety and labor shortage challenges. Executing tasks based on building information modeling (BIM) data, it is a completely cordless and easy to use system that locates itself accurately indoors, drills dust-controlled holes and marks them according to the trade. The unit is steered via remote control run by an operator to move from one location to the next. It uses reference data from Hilti's PLT 300 robotic total station and drills all holes within reach automatically with improved execution speed, constant performance and fewer errors. Daily progress can be reported from the field to the project office via cloud computing.

www.forconstructionpros.com/21200812

To learn more about this year's recipients, use the URLs shown or turn to www.ForConstructionPros.com/21591063 to access the full list of award winners with direct links to each enhanced product listing.



Autocar

DC-64D Severe-duty Class 8 Truck

The BADASS DC-64D is purpose built for construction. It features all-welded steel cab construction, which protects during roll-over incidents. The 4,982 sq. in. of viewable glass area provides 325° of visibility from the driver's seat. A 7-in. Smart Display with built-in diagnostics is standard. The truck's frame rail material has a yield strength of 160,000 psi, enabling it to handle up to 1,700 lbs.-ft. of torque and provide an 80,000-lb. towing capacity. An RS Godwin SCS dump body features Hardox steel for durability and lighter weight, which means more payload capacity. The 112-in. BBC and up to 50° wheel cut allow for easy steering and maneuverability. Diesel and CNG/LNG fuel options are available.

www.forconstructionpros.com/21201685

To learn more about this year's recipients, use the URLs shown or turn to www.ForConstructionPros.com/21591063 to access the full list of award winners with direct links to each enhanced product listing.



International Truck

Next-generation HX Series Severe Service Trucks

The set-forward axle HX520 and set-back axle HX620 feature a redesigned body focused on severe vocational applications, while the cab focuses on driver safety, comfort and productivity. The extreme-duty cab has a crack-resistant, three-piece hood engineered for enhanced visibility. Technologies such as OnCommand Connection, Diamond Logic and International 360 deliver a truly connected user experience. Dual steering gears and advanced anti-lock braking systems provide enhanced turning, traction and control. The HX620 comes with the International A26 engine to deliver up to 500 hp in a lightweight package. Both models are available with the Cummins X15 engine in ratings up to 605 hp and 2,050 lbs.-ft. of torque, as well as with manual, automated manual and automatic transmissions.

www.forconstructionpros.com/21203231

To learn more about this year's recipients, use the URLs shown or turn to www.ForConstructionPros.com/21591063 to access the full list of award winners with direct links to each enhanced product listing.



Ford F-600 Super Duty

The F-600 Super Duty chassis cab is the same size as a Ford F-550 overall, but uses upgraded components, higher-capacity wheels and tires and strategically placed frame reinforcements to deliver Class 6 capability, including a maximum GVWR of 22,000 lbs. It lets customers carry more payload, tow heavier loads or mount heavier upfits without moving into larger trucks. The vehicle is available in regular cab configuration with a choice of diesel or gasoline powertrains, four wheelbases, two-wheel or four-wheel drive and three fuel tank configurations that enable it to take on a wide range of construction applications. With the available 6.7-liter V8 Power Stroke diesel engine rated at 330 hp and up to 825 lbs.-ft. of torque, it delivers a gooseneck towing capacity of 34,500 lbs. and a maximum GCWR of 43,000 lbs.

www.forconstructionpros.com/21206475

To learn more about this year's recipients, use the URLs shown or turn to www.ForConstructionPros.com/21591063 to access the full list of award winners with direct links to each enhanced product listing.



Milwaukee MX FUEL CARRY-ON 3600W/1800W Power Supply

The 49.7-lb. MX FUEL CARRY-ON 3600W/1800W Power Supply provides 3,600 peak watts and 1,800 running watts of pure sine wave energy to power everything from high-demand 15A tools to sensitive electronics. Its compact size, zero emissions and quiet operation allow it to safely operate in confined, indoor spaces, while a roll cage provides durability for outdoor jobsite use. Push-button start enables startup in seconds. The unit delivers enough power to run one 15-amp tool and one lower wattage device simultaneously. It can be powered by a single battery or two batteries for double the run time. The kit includes the power supply, MX FUEL REDLITHIUM XC406 Battery Packs and a detachable charger cord. The system is ONE-KEY compatible.

www.forconstructionpros.com/21206838

To learn more about this year's recipients, use the URLs shown or turn to www.ForConstructionPros.com/21591063 to access the full list of award winners with direct links to each enhanced product listing.



Fecon Compact Stumpex

The Compact Stumpex is a slow-speed, high-torque auger-style stump grinder designed specifically for compact utility loaders. The slow auger speed ensures a safer work environment with no flying debris and faster cleanup, while high torque eradicates stumps of any species from 4 to 11 in. in diameter in a single plunge. The unit features a powerful, robust drive that generates up to 4,000 lbs. of torque. It includes a hardened auger cone that ensures positive draw into the stump and stepped blades made of 1/2-in.-thick durable AR500 material. It is suited for compact utility loaders with 10- to 20-gpm hydraulic flow and 2,000 to 3,000 psi.

www.forconstructionpros.com/21220715

To learn more about this year's recipients, use the URLs shown or turn to www.ForConstructionPros.com/21591063 to access the full list of award winners with direct links to each enhanced product listing.



Topcon Point Manager

Topcon Point Manager is a plug-in for Revit and AutoCAD that provides a complete office-to-field workflow for contractors to simplify design and as-built data exchange. Designed to automate point creation and easily import and export layout files to and from a robotic total station, it allows users to automatically create multiple points in 2D/3D drawings from within the design software for layout in the field. There they lay out those points, run deviation reports and, using cloud services, send completed layout files to update the design model to match as-built conditions. Using the cloud-connected MAGNET workflow, BIM personnel or CAD teams can also immediately share information to and from the field crew using a layout device.

www.forconstructionpros.com/21232829

To learn more about this year's recipients, use the URLs shown or turn to www.ForConstructionPros.com/21591063 to access the Full list of award winners with direct links to each enhanced product listing.



Oriel Attachment Product Line

Oriel Attachments Inc. designs and manufactures quality attachments for the construction, earthmoving and forestry industries, including what it describes as one of the simplest and safest quick couplers available. The Triple Lock design has only three moving parts and a Dead Lock that helps eliminate possible safety issues and minimize machine downtime. In addition, a range of hydraulic thumbs, digging and ditching/angle tilt buckets, tilting couplers, demolition rippers and grapples and a tree shear are built to suit carriers from 6,000 to 100,000 lbs. Pallet forks and rakes are also available. Each product has been designed and developed using the latest 3D modeling software and evaluated using finite element analysis coupled with material analysis.

www.forconstructionpros.com/21244749



To learn more about this year's recipients, use the URLs shown or turn to www.ForConstructionPros.com/21591063 to access the Full list of award winners with direct links to each enhanced product listing.



Caterpillar 374 Excavator

Powered by a 485-hp engine, the 158,200-lb. Caterpillar 374 excavator has a maximum digging depth of 28 ft. 1 in. and can reach to 43 ft. 2 in. at ground level. It features enhanced structural durability in the front linkages and increased base frame and counterweight mounting plate thickness on the frames. Booms have greater top and bottom plate thickness and sticks have increased side, bottom and bracket plate thickness. Further reinforcements are built into the car body, track link, track rollers, and boom, stick and bucket cylinders. To expand productivity, a dedicated swing pump aids multifunction capability and provides 10% more swing torque. Cat Payload, upgradeable Cat Grade with 2D, Lift Assist, 2D E-Fence, Auto Hammer Stop and Cat Product Link are standard.

www.forconstructionpros.com/21259522



To learn more about this year's recipients, use the URLs shown or turn to www.ForConstructionPros.com/21591063 to access the full list of award winners with direct links to each enhanced product listing.



Trimble **Roadworks 3D Paving Control for Asphalt Pavers**

Trimble Roadworks is an automatic 3D screed control system that can improve paving productivity and rideability by directly referencing the design rather than a surface or stringline to minimize asphalt usage, reduce waste and overruns and finish projects on time and under budget. The Android-based application runs on a 10-in. TD520 touchscreen display with colorful graphics, natural interactions and gestures and self-discovery features that make it intuitive and easy to learn. Using a SNM941 Connected Site Gateway, the system allows the transfer of 3D designs from the office to the machine via the cloud so the operator is always using the latest design. Productivity data collected from the machine is automatically synced back to the office.

www.forconstructionpros.com/21259603



To learn more about this year's recipients, use the URLs shown or turn to www.ForConstructionPros.com/21591063 to access the full list of award winners with direct links to each enhanced product listing.



Genie S-60 J Telescopic Boom Lift

The S-60 J has a 60-ft. 10-in. platform height, 40-ft. 6-in. horizontal reach, 660-lb. platform capacity (unrestricted), single-envelope design and standard 6-ft. jib. A compact chassis and low-weight design (16,650 lbs.) keep ground pressure low for work in more sensitive ground conditions. Four-wheel drive with active oscillating axles and standard rough-terrain, foam-filled tires ensure easy maneuverability. Power is provided by a 24-hp Kubota D1105 Tier 4 Final-compliant, DEF-free engine. The unit comes with digital load sense technology for accurate load weighing and zero-load field calibration. It also features the standard Lift Guard Contact Alarm system, CAN-based control system with intuitive control system layout and a digital LCD screen at the ground controls.

www.forconstructionpros.com/21259648

To learn more about this year's recipients, use the URLs shown or turn to www.ForConstructionPros.com/21591063 to access the Full list of award winners with direct links to each enhanced product listing.



Kubota

SVL97-2 Compact Track Loader

The SVL97-2 boasts a 96-hp engine with a rated operating capacity of 3,200 lbs. (35% tipping load). It has 7,961 lbs. of breakout force and a 3.4-ft. reach at maximum height. A load-sensing hydraulic system and improved control valve provide more powerful pushing and driving forces, even for combined attachment operations. The unit has a re-engineered DEF system with lockable door. It comes standard with a rear view camera as well as telematics to monitor machine health and location. The pressurized cab includes a wider entrance, spacious interior with added legroom and ergonomically placed arm rest, standard high-back full suspension seat, easy open sliding windows and air conditioning. Front LED work lights are an available option.

www.forconstructionpros.com/21271009

To learn more about this year's recipients, use the URLs shown or turn to www.ForConstructionPros.com/21591063 to access the full list of award winners with direct links to each enhanced product listing.



Soil Connect Marketplace with E-ticketing

The Soil Connect digital marketplace provides an easier, faster and cost-effective way to transport and acquire soil, aggregates and other building materials. Users can post listings and requests for soil, aggregates and other materials, and upload supplier-certified analysis and geotechnical reports. The mobile and web-based app fully digitizes and streamlines the process. The eTickets platform allows users to capture, track and share the details of hauling materials. Users can track truck type, destination, pictures, material type and load count as well as collect eSignatures for contactless, paperless transactions. The eRegulatory module for eTickets automatically captures and saves essential truck, load and route data and lets users share it with regulatory bodies and other stakeholders.

www.forconstructionpros.com/21271128



To learn more about this year's recipients, use the URLs shown or turn to www.ForConstructionPros.com/21591063 to access the Full list of award winners with direct links to each enhanced product listing.



Mastodon

Model M60-S and M60-C Mulcher Attachments

The M60-S and M60-C forestry mulchers have a 60-in. cut width and are powered by a 160cc variable piston hydraulic motor controlled by E-TECH Smartdrive. This ECU-controlled power management system adapts and controls motor displacement to produce instant torque and optimal mulching performance. The units can be tuned to any machine in seconds using Bluetooth and a smartphone app or with the in-cab monitor. Both models feature a direct drivetrain that puts all available power to the rotor. The head on the M60-S produces up 780 ft.-lbs. of torque with a maximum rotor speed of 2,500 rpm. The M60-C has a hydraulically controlled dual-mode cutting chamber that offers fingertip control of the size of mulch and degree of broadcasting desired.

www.forconstructionpros.com/21283137

To learn more about this year's recipients, use the URLs shown or turn to www.ForConstructionPros.com/21591063 to access the full list of award winners with direct links to each enhanced product listing.

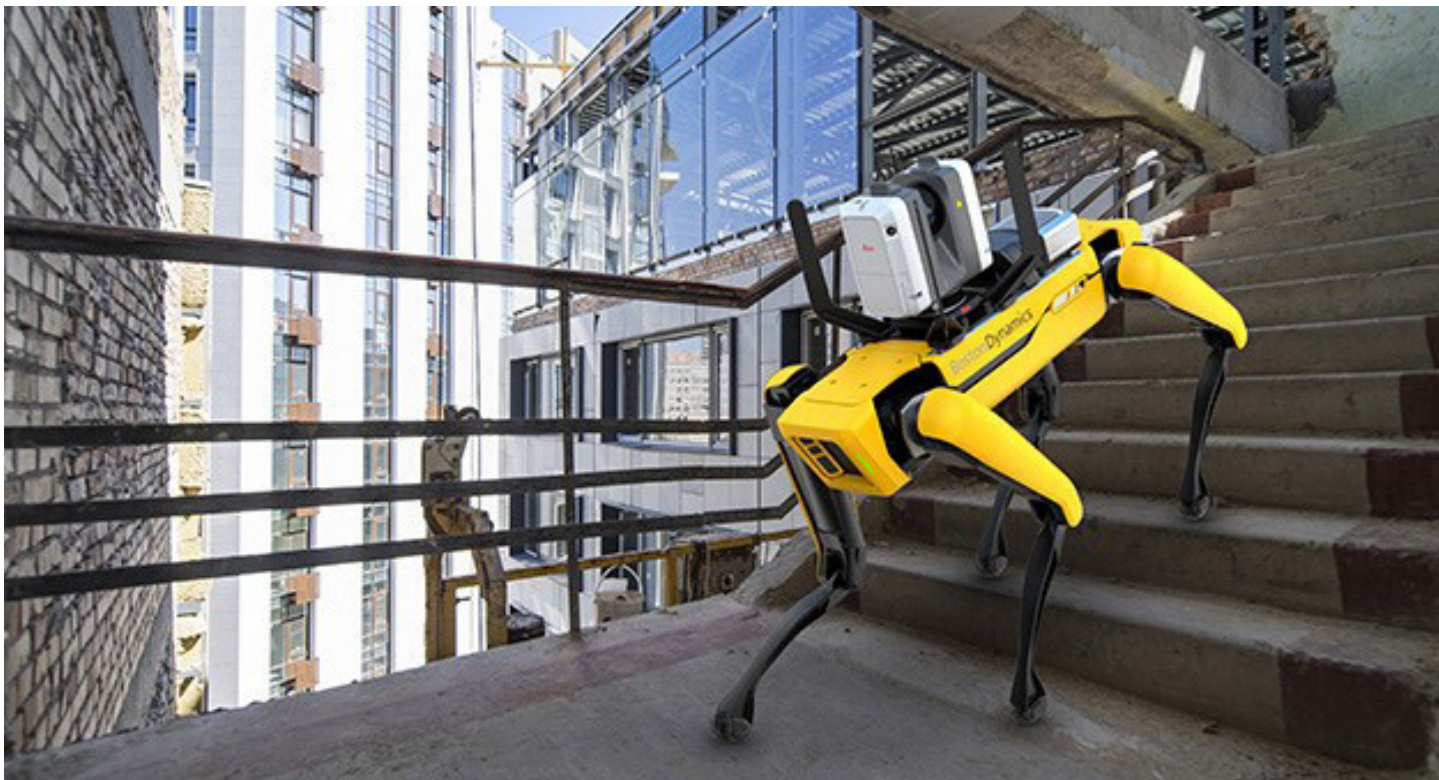


Komatsu D71-24 Dozer

Weighing from 49,824 to 50,927 lbs., the 237-hp Komatsu D71-24 hydrostatic transmission (HST) dozer is effective at grading, pushing, side cutting and work on soft ground, providing the flexibility to move from production to finish grading with a single machine. The intelligent Machine Control 2.0 can significantly improve productivity, especially with less-experienced operators. The unit comes with a high-capacity, wear-resistant blade, and is able to maintain ground speed while operating under heavy loads in H mode. Its Parallel Link Undercarriage System (PLUS) features rotating bushings to help minimize maintenance downtime and cost of ownership. A distinctive slant nose design offers enhanced visibility to the cutting edge and greater balance and maneuverability.

www.forconstructionpros.com/21307488

To learn more about this year's recipients, use the URLs shown or turn to www.ForConstructionPros.com/21591063 to access the full list of award winners with direct links to each enhanced product listing.



Leica

Geosystems RTC360 Laser Scanner for Boston Dynamic's Spot

Leica's RTC360 3D laser scanner can be integrated into the Boston Dynamics Spot agile mobile robot to reduce scanning time spent by operators by programming the devices to repeat automated scanning paths on jobsites. Once a programmed scanning route is learned, that route can be more easily and quickly repeated for regular scanning. The RTC360's VIS (Visual Inertial System) technology uses five cameras to track scanner movement within the site between scans. During operation, the user triggers each scan remotely via a mobile device while Spot and the RTC360 navigate the programmed path. Captured scan data is automatically combined from station to station, resulting in a completely pre-registered point cloud of the site.

www.forconstructionpros.com/21319374



To learn more about this year's recipients, use the URLs shown or turn to www.ForConstructionPros.com/21591063 to access the Full list of award winners with direct links to each enhanced product listing.



GOMACO

CC-1200e Battery-powered Curb Machine

The CC-1200e is equipped with a 48VDC lithium-ion battery pack that provides enough power for a full day of paving. Charging options include the standard eight- to 10-hour normal charge rate or an optional two-hour fast charge system. The G+ control system with full-function radio remote control puts all machine operations in the hands of the operator. Rotary-sensored slew drive steering on the front wheel assemblies allows smoother paving, easier control and maximum turning capability with the ability to slipform a 24-in. radius, depending on mold profile. The compact unit has a 19-cu.-ft. hopper capacity with up to 15 in. of horizontal sliding capabilities for easy alignment with ready-mix trucks. Curb molds can be easily interchanged and positioned for right-side or left-side paving.

www.forconstructionpros.com/21508925



To learn more about this year's recipients, use the URLs shown or turn to www.ForConstructionPros.com/21591063 to access the full list of award winners with direct links to each enhanced product listing.



Ram Trucks

Heavy Duty Pickups

The Ram Heavy Duty lineup features a towing capacity of up to 37,100 lbs. with a gooseneck hitch and 1,075 lbs.-ft. of torque. The Ram 1500 sets a benchmark for durability, technology, efficiency, performance and convenience. It offers up to 12,750 lbs. of towing capability and 2,300 lbs. of payload. Engine options include the standard 3.6L Pentastar V6 gas engine, two available HEMI V8 engines and a 3.0L EcoDiesel V6 engine. The half-ton diesel version provides 480 lbs.-ft. of torque and towing capability up to 12,560 lbs. The 2021 model year Ram 1500 and Ram 2500/3500 Heavy Duty are available in Limited Night Editions incorporating a monochromatic design enhanced by a black R-A-M grille, grille surround, badging, black aluminum wheels (20 or 22 in. on 1500 models), exhaust tips and more.

www.forconstructionpros.com/21576888

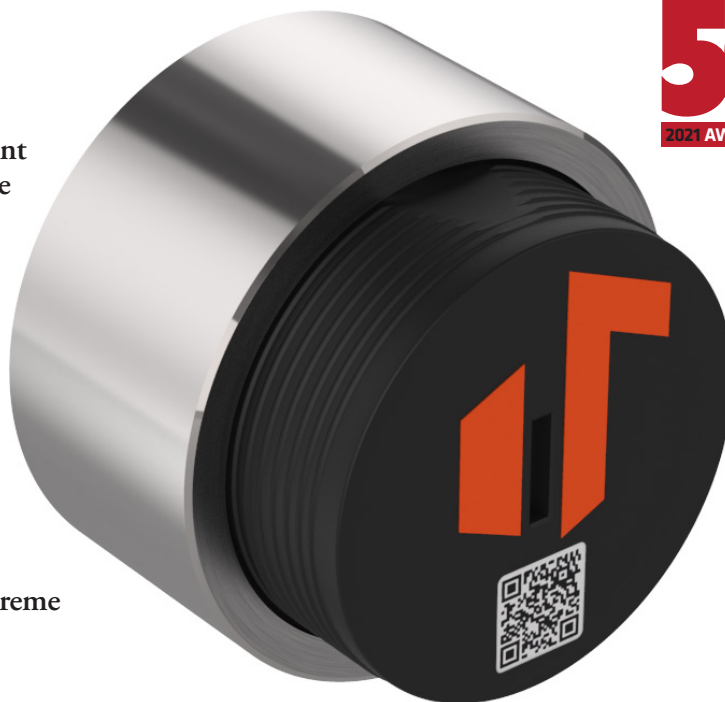
To learn more about this year's recipients, use the URLs shown or turn to www.ForConstructionPros.com/21591063 to access the full list of award winners with direct links to each enhanced product listing.

Tenna

TennaBLE Beacon Steel Puck

The TennaBLE Beacon Steel Puck is suited for autonomously tracking the location of equipment parts, attachments, tools, trench boxes and more that get aggressive, high-impact use. This spin on Tenna's traditional Bluetooth Low Energy (BLE) beacon is encased in steel and welded to the asset for extra ruggedness. It sends out regular "heartbeats" which are recognized by the company's mobile asset tracking apps for iOS and Android. When downloaded onto a smart device, the app automatically identifies and records the location of tagged assets when in range (approximately 100 ft.) and stores the data. A non-rechargeable lithium metal battery provides long life (up to three years) even in extreme temperatures.

www.forconstructionpros.com/21354432



To learn more about this year's recipients, use the URLs shown or turn to www.ForConstructionPros.com/21591063 to access the Full list of award winners with direct links to each enhanced product listing.

