

Best Practices for:

Residential and Commercial Paving Jobs



© Artem - stock.adobe.com

SEVEN TIPS

TO PLAN, PREPARE AND EXECUTE
SUCCESSFUL PAVING JOBS

PAVEMENT
MAINTENANCE & RECONSTRUCTION

Create a plan and stick to it.

That's pretty good advice. Brian Hall, territory manager with LeeBoy, knows just how important planning is to paving projects. In fact, Hall says that quality paving starts with proper planning. During a National Pavement Conference Live session Hall discussed these seven areas of focus to create a proper plan for successful paving projects. Add these to your checklist for all your residential and commercial paving projects.

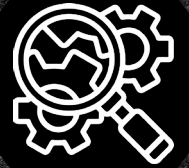


1. Schedule a pre-job meeting

- Assign tasks to each team member.
- Ensure everyone understands the scope of work.
- Discuss work zone safety and PPE.

2. Inspect all equipment daily

- Inspect the engine, transmission and hydraulic oil levels; fill to correct level if necessary.
- Visually check the machine for tire wear, hydraulic hose leaks and seat belt damage.
- Check electrical wires, protective devices, pedal and levers and shields.
- Equipment operators should read and understand the equipment manual as well as all instruction and safety decals.
- Ensure all systems and components are working properly. Make your own checklist or consult with the equipment manufacturer.



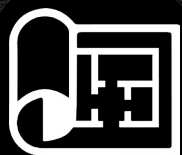
3. Order tons not truckloads

- Keep in mind the length of haul and traffic conditions.
- Communication is key to prevent stop and go paving or potential failures.
- If you have to stop the paver, leave the hopper 25% full to keep the asphalt at the bottom warm. New HMA from the truck will reinvigorate the top layer of asphalt in the hopper.

4. Prepare the site for success

- Check the existing pavement for imperfections. Look for standing water or cracking, fix cracks prior to paving.
- Clean the existing pavement with blowers, brooms or a sweeper before laying the fresh mat.





5. Layout the job prior to start

- Utilizing technology such as grade control equipment or string/paint lines can optimize success.
- Plan for truck entrance and exit, fewest number of tie-ins, how to pave your way out and keeping the roller busy.

6. Keep the screed properly maintained

- Check and adjust flight screws, extensions and crown.
- "Zero out" electric screws.
- Set up and check automatic grade controls.
- Set end gates to meet job requirements.
- Always spray the screed BEFORE lighting burners.



7. End of day maintenance

- Remove excess asphalt from the paver.
- Clean and spray components like auger and conveyor chains.
- Run conveyors and spray with release agent.
- Add fuel at night.
- Grease necessary parts.

Brian Hall
Territory Manager - LeeBoy

BONUS TIP:

Nothing throws a wrench in a well thought out plan like unexpected machine downtime. Before each job, make sure your equipment is in peak working condition by following these 15 steps Caterpillar suggests to set up your paver and screed for optimal machine performance.

1. Heat screed
2. Set tow points
3. Set paving width
4. Set crown height
5. Set extender height
6. Set extender slope
7. Set screen and remove slack
8. Null the screed
9. Position end gates
10. Set auger height
11. Position feeder sensors
12. In low idle, fill auger chamber
13. Adjust feeder controls
14. Set accessory functions
15. Pull of starting reference

PAVEMENT[®]

MAINTENANCE & RECONSTRUCTION



© Nul - stock.adobe.com

Follow us on:



AC Business Media is a leading business-to-business media and business intelligence company with a portfolio of renowned brands in heavy construction, asphalt, concrete, paving, rental, sustainability, landscape, manufacturing, logistics and supply chain markets. AC Business Media delivers relevant, cutting-edge content to its audiences through its industry-leading digital properties, trade shows, videos, magazines, webinars and newsletters. It also provides advertisers the analytics, data and ability to reach their target audience.