

Date	Project	Weather		
Tuesday April 26th 2016	Atlanta Falcons Stadium	TIME	TEMP	DETAILS
	38 Mangum St. SW	07:15AM *	62 F	Humidity: 93, Wind: 4 mph
	Atlanta ,Georgia 30313	12:15PM *	F	Humidity: 93, Wind: 4 mph
	B-14261-3-B21	05:15PM *	81 F	Humidity: 46, Wind: 7 mph
	Timezone: America/New_York	* Yahoo! Weather ( <a href="http://weather.yahoo.com">http://weather.yahoo.com</a> )		

## Labor

Name	Trade	Classification	Qty	Notes
Atlanta Stadium Partners	Safety Manager	Safety	1.00	Mitchell St
Atlanta Stadium Partners	Security	Safety	1.00	
Atlanta Stadium Partners	Logistics Manager	Administration	1.00	
Atlanta Stadium Partners	General Workers	Crew	7.00	
Atlanta Stadium Partners	Special Inspector	QA/QC	4.00	
Atlanta Stadium Partners	Mechanical	Sr. Superintendent	2.00	
Atlanta Stadium Partners	Safety Coordinator	Safety	5.00	
Atlanta Stadium Partners	Mechanical	Superintendent	5.00	
B&D Concrete Cutting	General Workers	Crew	2.00	
F&S Mechanical	Plumber	Superintendent	1.00	
F&S Mechanical	Plumber	Apprentice	60.00	
F&S Mechanical	Plumber	Material Handler	5.00	
F&S Mechanical	Pipefitters	Apprentice	19.00	
F&S Mechanical	Pipefitters	Material Handler	4.00	
F&S Mechanical	Pipefitters	Superintendent	1.00	
F&S Mechanical	Plumber	Foreman	7.00	
F&S Mechanical	Plumber	Journeyman	55.00	
F&S Mechanical	Pipefitters	Foreman	2.00	
F&S Mechanical	Pipefitters	Journeyman	26.00	
New Energy Electric	Electrical	Crew	7.00	BMS Controls
RF Knox	Sheet Metal Worker	Journeyman	3.00	
RF Knox	Sheet Metal Worker	Superintendent	1.00	
RF Knox	Sheet Metal Worker	Foreman	1.00	
RF Knox	Sheet Metal Worker	Apprentice	1.00	
Southside SM	Sheet Metal Worker	Apprentice	18.00	
Southside SM	Sheet Metal Worker	Foreman	4.00	
Southside SM	Sheet Metal Worker	Superintendent	1.00	
Southside SM	Sheet Metal Worker	Journeyman	16.00	
Tebarco Mechanical	Pipefitters	Crew	36.00	
Tebarco Mechanical	Pipefitters	Superintendent	2.00	
Vulcan Insulation	Insulation Workers	Journeyman	21.00	
Vulcan Insulation	Insulation Workers	Superintendent	1.00	

**TIME Apr 26, 08:07AM RECORDED BY JAKE FOSTER**

**[Lat/Long: 33.754721,-84.402922]**

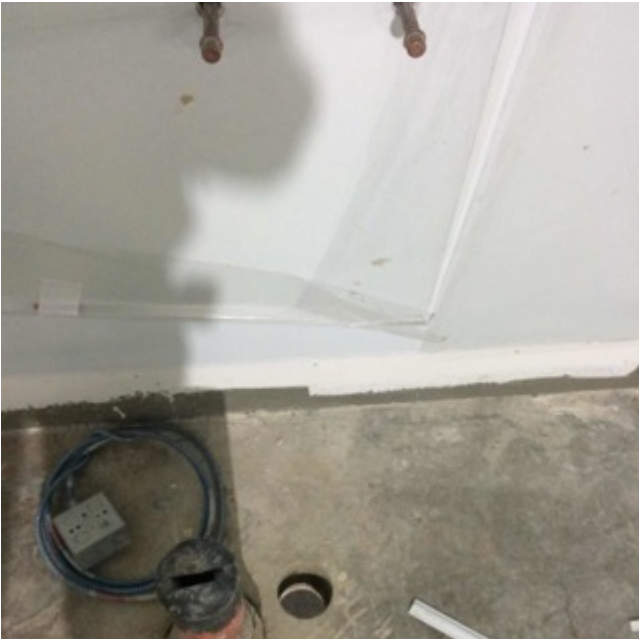
Concourse 1, column line 60. A new hole has been cored for the mop sink drain for months, and F & S has not stubbed through the new hole.



**TIME Apr 26, 08:13AM RECORDED BY JAKE FOSTER**

**[Lat/Long: 33.754822,-84.402962]**

Concourse 1, column line 9 concession. The drain for the mop sink is in the wrong hole. We have coiled them a new hole that has been there for awhile, and F & S has not stubbed to the new hole.





**TIME Apr 26, 09:52AM RECORDED BY JOSEPH HARTLINE**

**[Lat/Long: 33.755359,-84.396397]**

Concourse 1, column line 11.

2 clean outs need to be fixed, flush with wall. And carrier nipples need to be extended.



**TIME Apr 26, 09:53AM RECORDED BY JOSEPH HARTLINE**

**[Lat/Long: 33.758370,-84.396787]**

Janitor's closet at column line 11, needs attention.