

1243 ADT



WHEN 63 YARDS IS JUST TOO BIG AND 33 YARDS IS NOT BIG ENOUGH

The K-Tec 1243 ADT is designed for self-loading with a 40-ton, 450+ horsepower rock truck. The 1243 ADT utilizes K-Tec's proprietary gooseneck hitching system, and has a PSI strength which is significantly greater than many competing scrapers. It features fast hydraulics, a smooth ride, and joy-stick scraper control.

1243 ADT SPECIFICATIONS

General Specifications	Standard	Metric
Heaped Capacity (ISO)	43 Cubic Yards	32.9 Cubic Metres
Struck Capacity	25.7 Cubic Yards	19.6 Cubic Metres
Max Loading Rating	103,200 lbs	46,810 kgs
Bucket Dimensions	12' W x 5" H x 12' 7" L	3.66m W x 1.52m H x 3.87m L
Cutting Width	14'	4.26m
Cutting Edge	3-Piece Blade	3-Piece Blade
Gate Opening	75.8"	2 m
Rack Height (Tiltable)	3.8'	1.16 m
Gate Cylinders	6" x 26.25"	0.152 m x 0.667m
Lift Cylinders	6" x38"	0.152m x 0.965m
Ejector Cylinders	5.5" x 75"	0.140m x 1.93m
Transport Cutting Edge Clearance	29"	0.74m
Gate Extension	Standard	Standard
Roller-Push Block	Standard	Standard
Radial Tires (4) - Standard	25.6 R25	25.6 R25

Gallery

Gravel / Texas, USA



Topsoil / California, USA



Clay / Winnipeg, MB



Gravel / Texas, USA



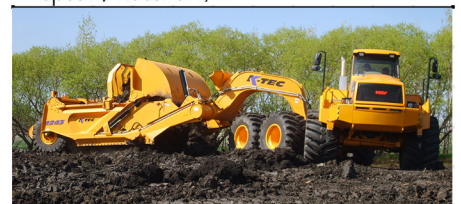
Topsoil / California, USA



Sand / Macomb, IL



Topsoil / Rosenort, MB



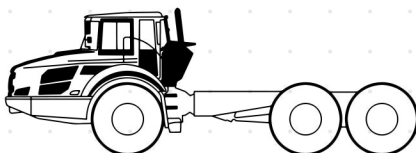
K-Tec Scraper Features



Optional Upgrades

Radial Tires (4)	29.5 R25 29.5 R29 24.0 R35
Brake System	8 Caliper Disc Brakes
Gate Extension	Adds 3 cubic yards to heaped capacity
Hydraulic Filter System	Prevents cross-contamination between scraper & truck
Truck Fender System	Protects truck from material flinging from tires
Truck Chassis Catwalk System	Easy access steps and platform

Recommended Power Units



400HP +/-298 KW + Articulated Dump Truck

Transportation Measures	Standard	Metric
Overall Width	14'	4.25m
Overall Height	11'3"	3.43m
Overall Length	40'3"	12.28 m
Shipping Weight	50,160 lbs	22,752 kgs

Specifications are subject to change without notice.