

C SERIES COMPACT WHEEL LOADERS

W50_{C_{ZB}}

W50_{C_{TE}}

W80_C

W80_{C_{HS}}



- Certified Tier IV engines with low emissions
- New, more compact design with increased stability
- Z-Bar linkage for increased breakout force and lifting advantage
- High speed option allows for travel up to 21.7 miles per hour



INCREASED STABILITY, COMFORT AND PRODUCTIVITY

New Holland C Series compact wheel loaders are completely new, with a stable, more compact design, and with more built-in comfort and convenience. You can rely on New Holland compact wheel loaders to perform smoothly and quickly to boost your efficiency on every job site.

EVEN MORE COMPACT

With reduced machine length and width, as well as a lower overall machine height, New Holland compact wheel loaders are even more compact than previous models, so you can work and maneuver easily in restricted spaces.

INCREASED STABILITY FOR FASTER, MORE CONFIDENT OPERATION

C Series compact wheel loaders also feature increased stability so you can:

- lift and move larger loads
- enjoy a smoother ride
- operate with more confidence
- travel more smoothly and quickly, even in tough conditions



FOUR MODELS TO MATCH YOUR NEEDS

MODEL	CONFIGURATION	NET HP (KW)	LIFT LINKAGE
W50C ZB		55 hp (41 kW)	Z-Bar
W50C TC	Tool Carrier	55 hp (41kW)	Parallel
W80C		70 hp (52 kW)	Z-Bar
W80C HS	High Speed	70 hp (52 kW)	Z-Bar





SPACIOUS COMFORT AND SMOOTH CONTROL

The brand-new cab design incorporates big comfort, with roomy dimensions and natural, ergonomic controls. Redesigned wide steps give you easier cab entry and exit. The seat, steering column and armrest adjust to make every operator comfortable. The standard LCD display puts information within an easy glance. The high-performance heater/defroster is standard with optional air conditioning for comfort in any season.

LIFT, LOAD, DIG AND SCRAPE MORE EFFICIENTLY

With dependable engine and hydraulic power and a choice of buckets and attachments, New Holland compact wheel loaders do much more than load. They allow you to scrape, grade, push, rake, haul and more.



Z-BAR LINKAGE - W50C ZB, W80C, W80C HS

The new Z-bar linkage design provides increased breakout force, digging and lifting power. This rugged, simple design is ideal for load-and-carry, high-production applications.

PARALLEL LINKAGE - TOOL CARRIER - W50C TC

The precise, parallel lift path of the W50C TC model eliminates the need for manual correction. The self-leveling lift path means operators can focus on load placement instead of leveling and can increase speed. This model works for multiple applications, but is ideal for forklift work.

BIG POWER

New clean-running Tier IV engines are fuel efficient and reduce emissions.

OPTIONS TO CUSTOMIZE YOUR MACHINE

High-Flow Hydraulics Option (W80C only)

For added versatility and power when working with hydraulic attachments, choose the high-flow option that delivers 34 gpm at 2900 psi.

Auto Ride Control Option

Choose the Auto Ride Control option for a more comfortable ride, less spilling, and less machine wear-and-tear when working on rough ground. This feature engages automatically when ground speed reaches 2.5 mph (4km/h) and automatically disengages at slower speeds for loading and unloading.

Creep Speed Option

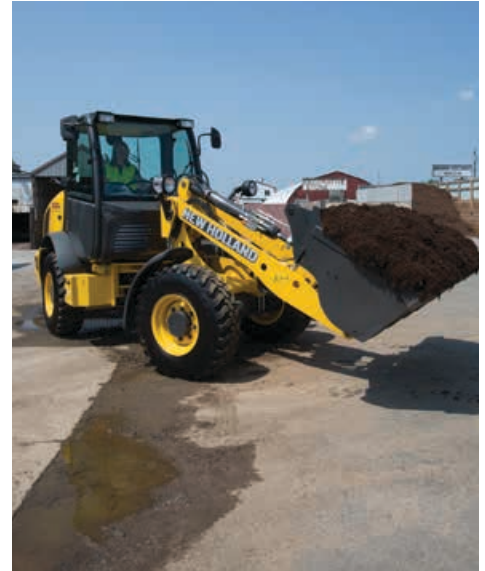
For applications that require slow, steady control, the creeper transmission option allows your machine to operate with a maximum speed of 3.4 mph.

High-speed Option (W80C)

An optional 21.7 mph (35 kph) transmission is available for the W80C for faster travel on the job site and between locations.

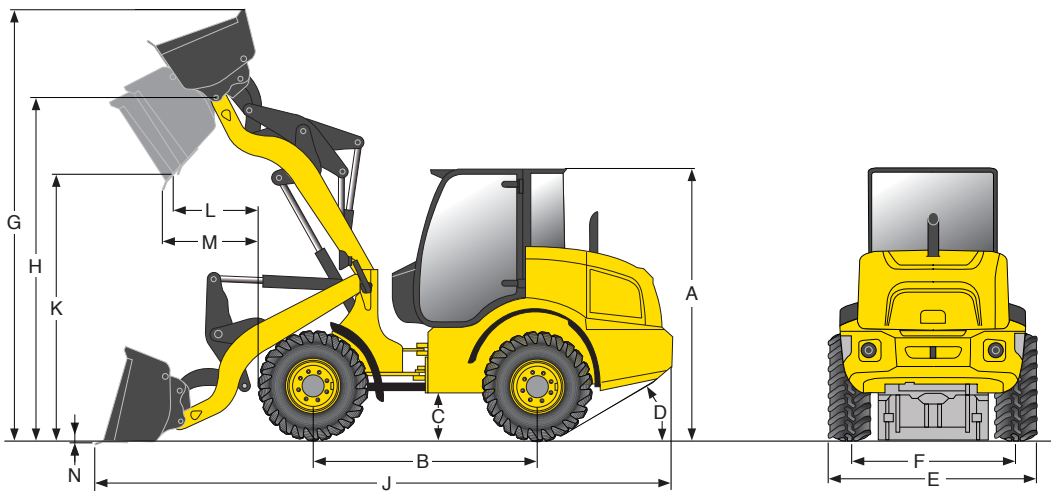
Return to Dig

This option quickly returns the bucket to the dig position after dumping.



FAST SERVICING

Fast, ground-level access to maintenance points and long service intervals reduce the time your operators spend on routine maintenance tasks.



DIMENSIONS, in. (mm)		W50C ZB	W50C TC	W80C	W80C HS
A.	Cab height	97" (2458)	97" (2458)	106" (2680)	106" (2680)
B.	Wheelbase	82" (2075)	82" (2075)	88" (2225)	88" (2225)
C.	Ground clearance under shaft	17" (444)	17" (444)	19" (493)	19" (493)
C.	Ground clearance under axles	13" (321)	13" (321)	15" (370)	15" (370)
D.	Angle of departure	28°	28°	32°	32°
E.	Overall width without bucket	69" (1740)	69" (1740)	73" (1860)	73" (1860)
F.	Tread width	55" (1400)	55" (1400)	59" (1500)	59" (1500)
G.	Operating height - fully raised with spillguard	154" (1400)	154" (1400)	169" (4322)	169" (4322)
H.	Hinge pin height - fully raised	122" (3136)	121" (3113)	132" (3395)	132" (3395)
J.	Overall length - bucket level on ground	206" (5283)	204" (5219)	222" (5684)	222" (5684)
K.	Dump height - fully raised, 45° dump	97" (2490)	93" (2396)	105" (2687)	105" (2687)
L.	Bucket reach - fully raised, 45° dump	30" (766)	26" (668)	33" (845)	33" (845)
M.	Bucket reach - 7 ft 0 (2.13m), 45° dump	43" (1102)	37" (948)	52" (1323)	52" (1323)
N.	Dig Depth	3" (73)	5" (126)	3" (84)	3" (84)
	Turning radius - outside	146" (3721)	146" (3721)	157" (3987)	157" (3987)
	Turning angle -				
	From center	40°	40°	40°	40°
	Total angle	80°	80°	80°	80°
	Rear axle oscillation, total	18°	18°	20°	20°

ELECTRICAL	W50C ZB	W50C TC	W80C	W80C HS
Voltage, volts	12	12	12	12
Alternator, amps	120	120	120	120
Batteries	95 AHR, 900 CCA	95 AHR, 900 CCA	95 AHR, 900 CCA	95 AHR, 900 CCA

HYDRAULICS	W50C ZB	W50C TC	W80C	W80C HS
Pump (steering/implement)	Open-centered pressure/flow compensated. Fixed gear pump			
Loader control valve	Open-center, Hydraulic Loader Control with single lever includes: Forward/Neutral/Reverse switch, Floating switch, Low/High Travel mode switch, Auxiliary Function Roller			
Loader auxiliary steering	Hydraulic orbital center-pivot articulating w/on-demand oil flow			
Filtration	15-micron, full flow replaceable cartridges on return line			
Flow at 2500 rpm, gpm (lpm)	18 (67)	18 (67)	22 (85)	22 (85)
Main relief pressure, psi (bar)	3335 (230)	3335 (230)	3335 (230)	3335 (230)

HIGH FLOW	W50C ZB	W50C TC	W80C	W80C HS
Pump	Additional HF pump	Additional HF pump	Additional HF pump	Additional HF pump
Flow at 2500 rpm, gpm (lpm)	N/A	N/A	34 (130)	34 (130)
Pressure, psi (bar)	N/A	N/A	2900 (200)	2900 (200)

CYLINDERS	W50C ZB	W50C TC	W80C	W80C HS
Lift cylinder(s)	two	one	two	two
Bore diameter, in (mm)	3 (70)	4 (102)	3 (84)	3 (84)
Rod diameter, in (mm)	2 (51)	2 (51)	2 (51)	2 (51)
Stroke, in (mm)	29 (728)	24 (600)	30 (751)	30 (751)
Dump cylinder				
Bore diameter, in (mm)	3 (83)	3 (83)	3 (89)	3 (89)
Rod diameter, in (mm)	2 (44)	2 (51)	2 (57)	2 (57)
Stroke, in (mm)	19 (492)	15 (391)	20 (507)	20 (507)

ENGINE	W50C ZB	W50C TC	W80C	W80C HS
Model	F5HFL463B*F001	F5HFL463B*F001	F5HFL463A*F004	F5HFL463A*F004
Type	4-stroke	4-stroke	4-stroke	4-stroke
Cylinders	4 cylinders	4 cylinders	4 cylinders	4 cylinders
Fuel injection	High pressure common rail injection			
Fuel	Diesel	Diesel	Diesel	Diesel
Fuel Filter	Replaceable, full flow	Replaceable, full flow	Replaceable, full flow	Replaceable, full flow
Air filter	Dry type element w/ warning restriction indicator			
Radiator Core type	Staggered	Staggered	Staggered	Staggered
Fan	Direct drive	Direct drive	Direct drive	Direct drive
Lubrication/cooling oil pump	integral	integral	integral	integral
Engine oil	SAE 10W40 CJ-4 DIESEL SAE 0W40 CJ-4 DIESEL			
Pump	Deep sump plate cooler with pressurized under-piston nozzles			
Bore, in. (mm)	3.898 (99)	3.898 (99)	3.898 (99)	3.898 (99)
Stroke, in. (mm)	4.33 (110)	4.33 (110)	4.33 (110)	4.33 (110)
Displacement, liters	3	3	3	3
Pump operating angles				
Side-to-side	Rated 35°	Rated 35°	Rated 35°	Rated 35°
Fore and aft	Rated 35°	Rated 35°	Rated 35°	Rated 35°
Oil filtration	Replaceable, full flow	Replaceable, full flow	Replaceable, full flow	Replaceable, full flow
Engine speed				
Rated speed, full load, rpm	2500	2500	2500	2500
Low idle, rpm	950	950	950	950
High idle, no load, rpm	2500	2500	2500	2500
Horsepower - @ 2500 rpm				
Gross, hp (kW)	58 (43)	58 (43)	74 (55)	74 (55)
Net, hp (kW)	55 (41)	55 (41)	70 (52)	70 (52)
Peak torque @ 1400 rpm				
Gross, lb ft (N·m)	181 (245)	181 (245)	233 (316)	233 (316)
Net, lb ft (N·m)	185 (251)	185 (251)	227 (308)	227 (308)

DRIVETRAIN	W50C ZB	W50C TC	W80C	W80C HS
Transmission	Hydrostatic transmission			
Planetaries	Outboard	Outboard	Outboard	Outboard
Pump relief, psi (kPa)	6 (42)	6 (42)	6 (42)	6 (42)
Pump flow @ 2500 rpm, gpm (L/min)	26 (100)	26 (100)	37 (140)	37 (140)
Differential	Open or LSD	Open or LSD	Open Diff or LSD or 100% Diff Lock	
Front axle				
Differential ratio	3.67	3.67	3.67	3.67
Planetary ratio	6	6	6	6
Final axle ratio	22	22	22	22
Gear box				
1st ratio	1.85	1.85	2.75	2.75
2nd ratio	N/A	N/A	1.163	1.163
Service brakes	Single pedal. Not assisted, Hydraulic Brake pump with control of the "Inching" function. Auto refill system with auxiliary fluid tank. Caliper on front axle			
Parking brake	Mechanical control lever, Single dry disk on input of the front axle, Mechanical Caliper with no auto wear adjustment			

TRAVEL SPEEDS, mph (km/h)	W50C ZB	W50C TC	W80C	W80C HS
Turtle				
Forward	3 (5)	3 (5)	3 (5)	3 (5)
Reverse	3 (5)	3 (5)	3 (5)	3 (5)
Rabbit				
Forward	12 (20)	12 (20)	9 (14)	9 (14)
Reverse	12 (20)	12 (20)	9 (14)	9 (14)
High speed - Turtle				
Forward	N/A	N/A	N/A	3 (5)
Reverse	N/A	N/A	N/A	3 (5)
High speed - Rabbit				
Forward	N/A	N/A	N/A	21 (33)
Reverse	N/A	N/A	N/A	21 (33)

SERVICE CAPACITIES	W50C ZB	W50C TC	W80C	W80C HS
Fuel tank, gal (l)	23 (87)	23 (87)	23 (87)	23 (87)
Hydraulic system				
Total, gal (l)	15 (57)	15 (57)	15 (57)	15 (57)
Reservoir, gal (l)	11 (40)	11 (40)	11 (40)	11 (40)
Front Axle, gal (l)	2 (9)	2 (9)	2 (9)	2 (9)
Rear Axle, gal (l)	3 (12)	3 (12)	3 (12)	3 (12)
Engine oil w/ filter, gal (l)	2 (7)	2 (7)	2 (7)	2 (7)
Cooling, gal (l)	3 (13)	3 (13)	3 (13)	3 (13)

OPERATING WEIGHTS	W50C ZB	W50C TC	W80C	W80C HS
Reference configuration	Unit Equipped with ROPS/FOPS cab with heater, standard counterweight, front and rear fenders, full fuel, 165 (75 kg) operator			
Reference tires	12.5-18 PRMPT Dunlop Tires		365/80 R20 Dunlop Tires	
Reference bucket	0.9 yd ³ (0.7 m ³) general purpose bucket w/ Bolt-on-Edge		1.4 yd ³ (1.0 m ³) general purpose bucket w/ Bolt-on-Edge	
Operating weights, lb (kg)	11,111 (5040)	10,913 (4950)	13,184 (5980)	13,184 (5980)
With optional counterweight, lb (kg)	N/A	N/A	13,514 (6130)	13,514 (6130)

FORKS	W50C ZB	W50C TC	W80C	W80C HS
Fork weight with V type Coupler, lb (kg)	772 (350)	745 (338)	761 (345)	761 (345)
Forks length, in (mm)	47 (1200)	47 (1200)	47 (1200)	47 (1200)
Fork load center, in (mm)	20 (500)	20 (500)	20 (500)	20 (500)
Max height below forks, in (mm)	114 (2903)	116 (2959)	128 (3239)	128 (3239)
Ground-Fork Clearance @ max Reach, in (mm)	50 (1266)	53 (1344)	55 (1398)	55 (1398)
Payload (80% of FTTL - EN 474-3), lb (kg)	4004 (1816)	4524 (2052)	5011 (2273)	5011 (2273)
Tipping load - straight, lb (kg)	6019 (2730)	6539 (2966)	7372 (3344)	7372 (3344)
Tipping load - 40° turn, lb (kg)	5004 (2270)	5655 (2565)	6266 (2842)	6266 (2842)
Payload (80% of FTTL - EN 474-3) w/ add cwt, lb (kg)	N/A	N/A	5344 (2424)	5344 (2424)
Tipping load with add cwt- straight, lb (kg)	N/A	N/A	7950 (3606)	7950 (3606)
Tipping load with add cwt - 40° turn, lb (kg)	N/A	N/A	6680 (3030)	6680 (3030)

STD BUCKET	W50C ZB	W50C TC	W80C	W80C HS
Description	1,0 yd ³ (0.7 m ³) GP bucket Naked	1,0 yd ³ (0.7 m ³) GP bucket Naked	1.4 yd ³ (1,0 m ³) GP bucket Naked	1.4 yd ³ (1,0 m ³) GP bucket Naked
Dump angle - fully raised	45°	45°	45°	45°
Max. rollback: Ground	39°	37°	40°	40°
Max. rollback: Carry Position	47°	44°	45°	45°
Max. rollback: @ Maximum reach	69°	53°	55°	55°
Max. rollback: @ Full height	73°	55°	55°	55°
Maximum back dragging angle	42°	72°	61°	61°
ISO bucket capacity - Struck, yd ³ (m ³)	0.7 (0.5)	0.7 (0.5)	1.2 (0.8)	1.2 (0.8)
Heaped, cu. yd. (m ³)	1.0 (0.7)	1.0 (0.7)	1.4 (1.0)	1.4 (1.0)
Bucket width - outside, in (mm)	74 (1900)	74 (1900)	82 (2100)	82 (2100)
Bucket weight (incl. Coupler and components), lb (kg)	805 (365)	844 (383)	926 (420)	926 (420)
Operating load - ISO, lb (kg)	3538 (1605)	3598 (1632)	3962 (1797)	3962 (1797)
Maximum material density - ISO, lb/yd ³ (kg/m ³)	3865 (2293)	3930 (2331)	3029 (1797)	3029 (1797)
Tipping load - ISO: Straight, lb (kg)	8534 (3871)	8322 (3775)	9517 (4317)	9517 (4317)
Tipping load - ISO: 40° turn, lb (kg)	7077 (3210)	7194 (3263)	7921 (3593)	7921 (3593)
Tipping load - ISO: Straight with add cwt	N/A	N/A	10,031 (4550)	10,031 (4550)
Tipping load - ISO: 40° turn with add cwt	N/A	N/A	8510 (3860)	8510 (3860)
Operating load with add cwt - ISO	N/A	N/A	4006 (1817)	4006 (1817)
Maximum material density with add cwt - ISO	N/A	N/A	3147 (1867)	3147 (1867)
Lift Capacity: Full height, lb (kg)	7227 (3278)	5542 (2514)	8424 (3821)	8424 (3821)
Lift Capacity: Maximum reach, lb (kg)	9200 (4173)	6140 (2785)	10,644 (4828)	10,644 (4828)
Lift Capacity: Ground, lb (kg)	11669 (5293)	6614 (3000)	13,746 (6235)	13,746 (6235)
Breakout force with tilt cylinder, lb (kgF)	13320 (6042)	9048 (4104)	13,927 (6317)	13,927 (6317)
Loader clearance circle, in (mm)	335 (8596)	331 (8498)	362 (9294)	362 (9294)



COMPACT WHEEL LOADERS

W50C ZB

Net Horsepower
55 (41 kW) @ 2,500 rpm

Operating Weight
11,111 lbs (5040 kg)

ISO Bucket Capacity - Struck
0.92 cu. yd. (0.7 m³)

W50C TC

Net Horsepower
55 (41 kW) @ 2,500 rpm

Operating Weight
10,913 lbs (4950 kg)

ISO Bucket Capacity - Struck
0.92 cu. yd. (0.7 m³)

W80C

Net Horsepower
70 (52 kW) @ 2,500 rpm

Operating Weight
13,184 lbs (5980 kg)

ISO Bucket Capacity - Struck
1.31 cu. yd. (1.0 m³)

W80C HS

Net Horsepower
70 (52 kW) @ 2,500 rpm

Operating Weight
13,184 lbs (5980 kg)

ISO Bucket Capacity - Struck
1.31 cu. yd. (1.0 m³)

World Class Products Demand World Class Dealers

The purchase of a New Holland machine is just the beginning of our relationship together. Consider your experienced New Holland Construction equipment dealer as your local partner in productivity. Assistance in selecting the right model for your operation and developing an affordable leasing or financing plan through New Holland's financing division, CNH Industrial Capital, are just a few advantages your local dealer can provide.

Your New Holland dealer's full service capabilities bring you responsive support with genuine New Holland parts and all makes coverage. More importantly, we are there wherever and whenever you need us with our fully equipped service vehicles. From customized maintenance programs to professional operator and technical training, our factory-trained service and parts experts are there to assist you with any of your equipment support needs.

Your business deserves nothing less than world class product, supported by a world class business partner. That's your New Holland Construction Equipment dealer — your partner in productivity.



New Holland Construction
500 Diller Ave.
New Holland, PA 17557

www.newholland.com

New Holland Construction Equipment is backed with a Limited Warranty for 1-Year/Unlimited Hours. See the Warranty and Limitation of Liability for warranty details and terms.

Design, materials and/or specifications are subject to change without notice and without liability therefor. Specifications are applicable to units sold in Canada, the United States, its territories and possessions, and may vary outside these areas.

© 2015 CNH Industrial America LLC. All rights reserved. New Holland is a trademark in the United States and many other countries, owned by or licensed to CNH Industrial N.V., its subsidiaries or affiliates. Any trademarks referred to herein, in association with goods and/or services of companies other than CNH America LLC, are the property of those respective companies.



Safety begins with a thorough understanding of the equipment. Always make sure you and your operators read the Operator's Manual before using the equipment. Pay close attention to all safety and operating decals and never operate machinery without all shields, protective devices and structures in place. This is a one-person machine. Never allow riders in the cab, outside the machine, or in/on any bucket or attachment.

NHC201412CWL • 01157.5 • AC • PRINTED IN U.S.A.

Printed on recycled paper