

Excavators are only profitable if they are working when needed and can be cost-efficiently maintained in peak operating condition. As such, manufacturers are building in features designed to keep equipment productive in the field for longer periods, and to enable quick service or repair when required. The following pages provide a glimpse at some of these features, along with current model specifications. Sort through this information to find the right combination of qualities for your jobsites, then turn to the reader service card following page 34 or visit the Buyers Guide at [ForConstructionPros.com](http://ForConstructionPros.com) for more information on specific brands or models.



### Caterpillar Inc.

All F Series machines feature ground-level access to grease points, fluid taps and filters; doors designed to help prevent debris entry; and cooling systems set up to enable easy cleaning. Specifically, the 313F GC comes with a C3.4 engine that meets Tier 4 Final with-out diesel exhaust fluid and incorporates a maintenance-free DPF. A pilot manifold in the valve block means fewer components and less service required. The fuel tank has a remote drain tube in the pump compartment for easy removal of water and sediment. The engine oil drain tube makes oil changes quick and easy without requiring special tools.

Indicate 10 on inquiry card

Caterpillar Inc.						
Model	Net HP	Operating Weight (lbs.)	Std. Bucket (cu. yds.)	Breakout Force (lbs.)	Max. Dig Depth	Max. Reach at Ground Level
300.9D	18	2,170	.49-.95*	2,000	5' 8"	9' 11"
301.4C	17.7	3,241	.60-2.0*	3,597	7' 4"	12'
301.7D CR	17.7	3,726	.60-2.0*	3,190	7' 7"	12' 7"
301.7D	17.7	4,068	.60-2.0*	4,226	7' 3"	12' 2"
302.2D	17.9	4,464	.60-2.0*	4,406	8' 2"	13' 6"
302.4D	17.7	5,115	1.24-3.24*	4,900	7' 11"	13' 2"
302.7C	20.7	5,681	1.24-3.24*	5,058	8' 4"	14' 8"
303E CR	23.5	7,782	1.6-6.96*	6,385	9'	15' 9"
303.5E CR	31.6	8,139	1.6-6.96*	7,419	9' 6"	16' 8"
303.5E2	23.5	8,103	1.6-6.96*	7,419	9' 4"	16' 6"
304E CR	40	8,838	1.9-9.9*	8,498	10' 3"	17' 1"
304E2	40.2	8,655	1.9-9.9*	8,498	10' 3"	17' 1"
305E CR	40.2	11,217	1.9-9.9*	10,050	10' 9"	17' 10"
305E2 CR	40.2	11,334	1.9-9.9*	10,049	10' 9"	17' 6"
305.5E2 CR	44.1	11,863	1.9-9.9*	11,443	11' 5"	18' 6"
305.5E CR	44.2	11,938	1.9-9.9*	11,445	11' 4"	18' 6"
308E CR SB	65	18,371	3.5-14.8	9,015	13' 7"	22' 9"
308E2 CR SB	65	18,519	3.5-14.8	9,015	13' 6"	23'
314E CR	89	32,600	.27-1.0	12,800	19' 6"	28' 6"
312E	91	33,080	.27-1.0	12,800	19' 10"	28' 3"
311F RR	70	30,600	.27-1.0	11,465	18' 4"	26' 7"
313F L GC	70	32,200	.27-1.0	12,800	19' 9"	28' 3"
316E	113	38,801	.46-1.19	15,500	21' 7"	30' 5"
318E	113	42,340	.46-1.19	16,700	21' 7"	30' 5"
321D LCR	148	53,308	.61-2.05	23,223	22'	32' 1"
320E RR	152	54,900	.61-2.08	23,400	22' 1"	30' 9"
323F L	161	56,438	.61-2.08	23,400	22' 1"	32' 4"
326F L	203	64,831	.68-2.46	26,500	22' 4"	33' 2"
329F L	239	68,209	.68-2.58	24,953	25' 6"	36' 7"
335F L CR	200	83,703	.68-2.58	27,700	22' 11"	34' 11"
336F L	303	80,500	.95-3.52	31,810	26' 10"	38' 5"
336F L XE Hybrid	303	81,800	.95-3.52	31,810	26' 10"	38' 5"
349F	396	107,200	1.2-5.0	40,240	26' 11"	39' 10"
352F	396	117,500	1.2-5.0	40,240	26' 5"	39' 9"
374F	472	156,461	2.5-6.0	64,003	28' 2"	43' 2"
390F	524	190,204	2.8-8.5	62,203	31' 8"	48' 2"
323F L SLR	161	53,100	.69	NA	38' 4"	51' 7"
326F L SLR	203	64,831	.75-.90	NA	48' 4"	60' 6"
329F L SLR	239	68,180	.75-.90	NA	48' 5"	60' 5"
M313D**	128	33,270	.24-1.20	20,907 (N)	17' 4"	27' 10"
M315D**	137	37,633	.50-1.65	22,725 (N)	18' 8"	29' 5"
M322D**	165	49,052	.57-2.05	31,472 (N)	21' 3"	33' 10"
M318F**	169	42,549	.5-1.65	22,705	19' 4"	30' 2"
M320F**	169	46,385	.5-1.65	22,427	20' 7"	32'

\*Cubic feet \*\*Wheeled



### Bobcat Company

Bobcat compact excavators allow access to all major service areas using the swing-open tailgate and side access hood. Filters, fluid checks, air cleaner, battery and other maintenance points are simple to access, making it easy to make maintenance part of your routine. Side panels are also simply removed for additional engine access.

Indicate 11 on inquiry card

Bobcat Company						
Model	Net HP	Operating Weight (lbs.)	Std. Bucket (cu. ft.)	Breakout Force (lbs.)	Max. Dig Depth	Max. Reach at Ground Level
418	10.2	2,593	.54	1,865	6'	10' 2"
E20	13.9	4,306	1.1	4,684	8' 6"	14'
E26	24.8	5,666	2.9	4,991	8' 6"	14' 11"
E32	33.5	7,183	3.9	6,968	10' 3"	16' 4"
E32i	24.8	7,183	3.9	6,968	10' 3"	16' 4"
E35	33.5	7,468	3.9	6,968	10' 3"	17' 2"
E35i	24.8	7,468	3.9	6,968	10' 3"	17' 2"
E42	42.7	9,246	3.9	9,183	10' 6"	17' 3"
E45	42.7	10,077	5.9	7,650	10' 10"	18' 7"
E50	49.8	10,677	5.9	8,977	11' 7"	19' 6"
E55	49.8	12,313	5.9	8,977	12' 11"	20'
E63	59.4	13,779	5.9	9,731	13' 6"	20' 5"
E85	59.4	18,960	9.5	14,509	15' 6"	23' 11"

### Gehl

Performing OEM recommended maintenance is critical to assure your equipment's efficient and continuous operation. Gehl's Tier 4-compliant excavators have been designed to make that task quick and easy through the use of tool-free access panels, remote grease points and easily accessible filters.

In addition, the new LCD monitor allows owners to set programmable maintenance reminders, allowing them to adjust the interval between maintenance procedures.

Indicate 12 on inquiry card

Gehl						
Model	Net HP	Operating Weight (lbs.)	Std. Bucket (cu. yds.)	Breakout Force (lbs.)	Max. Dig Depth	Max. Reach at Ground Level
Z17 GEN:2	14.5	3,836	.06	3,417	7' 2.6"	12' 2.1"
Z25	19.7	6,217	.16	4,079	9' 8"	15' 9"
Z35 GEN:2	23.9	8,214	.16	5,643	10' 8"	17' 3.5"
Z45 GEN:2	37.7	10,814	.24	6,497	11' 7.8"	18' 10"
Z80 GEN:2	54.6	18,136	.44	11,332	14' 4.4"	23' 5.1"





## Case Construction Equipment

Case D Series excavators meet Tier 4 Final emissions standards through a combination of cooled exhaust gas recirculation (CEGR), selective catalytic reduction (SCR) and diesel oxidation catalyst (DOC) technologies, which helps maximize uptime and performance — all with minimal maintenance. There is no diesel particulate filter (DPF), no DPF regeneration or associated lifetime service costs.

Indicate 13 on inquiry card

Case Construction Equipment						
Model	Net HP	Operating Weight (lbs.)	Std. Bucket (cu. yds.)	Breakout Force (lbs.)	Max. Dig Depth	Max. Reach at Ground Level
CX31B	23	7,320	.08-.16	6,227	9' 3"	14' 1"
CX36B	23	8,212	.08-.24	6,227	10'	14' 7"
CX55B	37	11,312	.11-.36	11,128	12' 10"	17' 8"
CX75C SR	55	16,200	.21-.59	12,800	13' 7"	20' 7"
CX80C	55	18,800	.24-.59	12,800	13' 9"	22' 9"
CX130C	100	27,999	.32-1.12	20,200	19' 9"	28' 4"
CX145C SR	100	31,967	.43-1.02	20,200	19' 8"	28' 2"
CX160C LC	124	38,001	.36-1.28	25,200	19' 9"	29' 10"
CX210D	160	48,973	.55-1.76	31,923	21'	31' 11"
CX235C SR	160	56,907	.55-1.53	31,920	21' 8"	31' 7"
CX250D	177	56,909	.68-1.90	36,419	22' 8"	33' 2"
CX250D LR	177	63,523	1.38-1.77	17,310	47' 9"	59' 9"
CX300D	207	67,271	.72-2.42	39,342	23' 4"	34' 5"
CX350D	268	82,483	.88-2.72	51,639	24' 1"	36'
CX470C	362	105,300	2.03-3.37	55,530	25' 4"	38' 7"
CX700B	463	153,400	2.47-5.91	65,194	27' 7"	42' 4"
CX800B	532	178,575	2.47-5.91	74,187	28' 6"	45' 5"



## Wacker Neuson

Wacker Neuson engineers understand that easy access to service points often makes all the difference between equipment being serviced or not. That's why the company takes special care to make all grease points easy to locate and access. On most models, the side-mounted engine is located behind a large hood that provides workbench-like access. Filters are easy to access for inspection and replacement. Most models also feature tilting cabs that allow for quick access to hydraulic hoses and the swivel joint.

Indicate 14 on inquiry card

Wacker Neuson						
Model	Net HP	Operating Weight (lbs.)	Std. Bucket (cu. ft.)	Breakout Force (lbs.)	Max. Dig Depth*	Max. Reach at Ground Level*
803	12.8	2,182	.36-.80	2,021	5' 9"	10'
803 Dual Power	12.8	2,182	.36-.80	2,021	5' 9"	10'
1404	17.7	3,483/3,682 <sup>a</sup>	.87-1.8	3,192	7' 4"	12'
EZ17	17.2	3,802	.87-1.8	4,204	8' 2"	13' 2"
ET20	17.2	4,105/4,341 <sup>a</sup>	.87-1.8	4,226	8' 10"	13' 11"
EZ28	20.4	6,085/6,283 <sup>a</sup>	2.13-5.25	5,058	8' 4"	14' 8"
3503	31.8	8,003/8,219 <sup>a</sup>	2.13-5.25	6,812	10' 7"	17'
EZ38	28.2	8,311/8,488 <sup>a</sup>	2.13-5.25	5,778	10' 2"	17'
50Z3	37.7	11,133/11,354 <sup>a</sup>	3.0-9.8	7,599	11' 6"	19' 3"
6003	58.6	12,842 <sup>b</sup>	3.0-9.8	8,925	12' 7"	20'
8003	58.6	17,769 <sup>b</sup>	3.50-13.0	11,758	14' 1"	23'
6503**	58.2	12,556 <sup>b</sup>	3.0-9.8	8,745	12' 7"	20' 10"
EW100**	117	21,640	3.5-13.0	12,162	14' 1"	25'

<sup>a</sup> Canopy/cab <sup>b</sup> Cab only \* With standard dipper stick \*\* Wheeled



## Gradall Industries

New Gradall Series V hydraulic excavators have Tier 4 Final-compliant Volvo Penta diesel engines meeting the highest global emissions standards while reducing fuel consumption. They also feature high-performance, high-reliability 24-volt electrical systems and a new operator safety option, providing better rollover protection. All models are equipped with a telescoping, tilting boom that can do the work of many different machines, even in tunnels and under bridges where conventional booms cannot work.

Indicate 15 on inquiry card

Gradall Industries, Inc.						
Model	Net HP	Operating Weight (lbs.)	Std. Bucket (cu. yds.)	Breakout Force (lbs.)	Max. Dig Depth	Max. Reach at Ground Level
D152*	220	32,500	.5	12,000	14' 5"	25' 6"
XL3100 IV*	218	40,930	.88	17,990	18' 1"	27' 2"
XL4100 IV*	245	49,684	1.13	24,900	19' 11"	30' 2"
XL5100 IV*	265	57,670	1.6	24,900	24' 1"	33' 8"
XL3300 III*	152	39,295	.88	19,300	18' 5"	27' 3"
XL4300 III*	153	43,580	1.13	25,405	21' 3"	30' 4"
XL5300 III*	153	51,216	1.6	25,405	24' 7"	33' 10"
XL3200 III	152	39,240	.88	19,300	19' 2"	27' 5"
XL4200 III	153	46,862	1.13	25,405	22'	30' 6"
XL5200 III	153	54,452	1.6	25,405	25' 4"	33' 11"

\*Wheeled

## JCB

JCB's excavator range now features Tier 4 Final engines in all models from the JS145 to the JS220. These Ecomax engines don't require diesel particulate filters or regular regeneration, reducing time and money spent on maintenance. Tier 4 Final models also have

a 34% larger cooling pack, with both the charge air cooler and the air conditioning condenser now fully hinged to allow easy access for cleaning. New steps and handrails make it easier and safer for operators to access the engine and upperstructure.

Indicate 16 on inquiry card

JCB						
Model	Net HP	Operating Weight (lbs.)	Std. Bucket (cu. yds.)	Breakout Force (lbs.)	Max. Dig Depth	Max. Reach at Grade Level
8008	12	2,094	.3-.61*	2,091	5' 7"	10' 2"
8018	19	4,017	.62-1.47*	3,642	9'	13' 4"
8029	32.7	6,321	1.08-5.07*	5,170	10'	15' 3"
80352TS	32.7	8,049	1.08-5.07*	7,194	11' 6"	17' 5"
8040ZTS	45	9,480	1.06-4.6*	8,340	11' 7"	18' 5"
8045ZTS	45	10,472	1.06-4.6*	9,487	12' 3"	19' 2"
8055	45	11,660	1.06-4.6*	9,487	12' 3"	19' 6"
67C-1	51.5	14,740	2.25-8.8*	10,611	12' 11"	21'
85Z-1	60.8	18,298	2.25-9.89*	12,837	11' 11"	22' 2"
86C-1	60.8	18,960	2.25-9.89*	12,837	14' 4"	23' 3"
90Z-1	70.3	18,975	2.25-9.89*	12,837	13' 6"	23' 8"
100C-1	70.3	21,457	2.25-9.89*	16,231	14' 9"	24'
JS145	109	34,430	.307-1.15	20,667	19' 10"	28' 5"
JS160NLC	125	40,644	.5-1.15	26,104	20' 7"	29' 9"
JS190NLC	125	44,099	.46-1.18	26,104	21' 8"	29' 10"
JS220LC/XD	172	49,714	.52-1.56	34,835	22'	31' 8"
JS220LR	172	49,714	.36-.72	34,835	39' 3"	50' 8"
JS260LC/XD	197	61,160	1.0-1.91	43,154	23' 8"	34' 6"
JS260LR	197	61,160	.36-.72	43,154	50' 6"	61' 3"
JS330LC/XD	271	73,387	1.54-2.41	43,000	26' 10"	38' 4"
JS360	282	84,596	1.11-3.06	60,296	26' 6"	38'
JZ235	172	51,194	.5-2.35	34,835	21' 7"	31' 9"

\*Cubic feet



## LBX Co.

Serviceability and routine maintenance on the Link-Belt X4s has been improved with a new tilting A/C condenser, easily removable and cleanable radiator screens, standard battery disconnect switch, ground level access to air, oil and fuel filters and easy access to hydraulic oil and engine oil sample ports. The monitor provides 14 different service interval reminders to make maintenance upkeep simple. The RemoteCARE GPS-enabled telematics system tracks routine and major service intervals, as well as current machine health. Flashing diagnostic codes on the monitor alert the operator when problems occur.

Indicate 19 on inquiry card

LBX Co.						
Model	Net HP	Operating Weight (lbs.)	Std. Bucket (cu. yds.)	Breakout Force (lbs.)	Max. Dig Depth	Max. Reach at Ground Level
75X3 MSR	55	17,300	.24-.71	8,880	15' 2"	22' 2"
80X3 MSR	55	18,800	.24-.71	8,880	15' 4"	24' 4"
130X3	100	28,660	.42-.98	14,800	19' 10"	26' 10"
130X3DZ	100	29,983	.42-.98	14,800	19' 10"	26' 10"
145X3	100	31,800	.42-.98	14,840	18' 1"	26' 8"
145X3DZ	100	33,200	.42-.98	14,840	18' 1"	26' 8"
160X3	124	37,919	.50-1.14	18,880	19' 11"	29' 1"
210X3	160	47,840	.61-1.75	24,730	21' 10"	31' 11"
235X3	160	55,997	.47-1.75	24,730	21' 10"	31' 9"
235X3DZ	160	56,879	.47-1.75	24,730	21' 10"	31' 9"
210X4	160	48,900	.61-1.75	25,100	21' 10"	31' 11"
250X4	177	56,900	.76-2.43	29,230	22' 8"	33' 2"
250X4LF	177	63,600	.50-.95	9,060	47' 9"	59' 9"
300X4	207	67,000	.76-2.43	31,380	23' 4"	34' 5"
350X4	266	82,400	1.08-2.93	40,020	24' 1"	36'
470X3	362	108,467	1.37-4.05	46,310	25' 4"	39' 4"
700X2	463	153,442	1.78-4.89	55,080	27' 7"	42' 4"
800X2	532	178,574	2.47-5.42	67,440	28' 6"	45' 5"



## New Holland

New Holland is known for easy maintenance, and B Series compact excavators are designed to answer those expectations with wide service compartments and quick access. A new fuel-saving mode saves an additional 23% to 25% for fewer fill-ups. And for the first time, you can choose an Integrated Noise and Dust Reduction (INDR) cooling system for quiet comfort. The easy to clean filter reduces the need for direct cleaning of the radiator.

Indicate 18 on inquiry card

New Holland North America						
Model	Net HP	Operating Weight (lbs.)	Std. Bucket (cu. yds.)	Breakout Force (lbs.)	Max. Dig Depth	Max. Reach at Ground Level
E30B	17.2	7,319	-	5,418	9' 3"	16' 6"/17' 6"*
E35B	28.4	7,763	-	5,418	10' 1"	16' 9"/18'*
E55Bx	37.9	12,295	-	6,992	12' 9"	20'

\*Standard arm/Long arm



## Hyundai

The proprietary Hi-mate remote management system provides access from anywhere to vital service and diagnostic information for any Hyundai machine. The system saves time and money by promoting greater preventive maintenance to reduce machine downtime. Users can check fuel consumption, coolant temperature, pump pressure and more. They can make an online diagnosis and even shut down a machine in case of theft. Owners can check operator driving habits, as well as the unit's maintenance status.

Indicate 17 on inquiry card

Hyundai Construction Equipment Americas Inc.						
Model	Net HP	Operating Weight (lbs.)	Std. Bucket (cu. yds.)	Breakout Force (lbs.)	Max. Dig Depth	Max. Reach at Ground Level
R17Z-9A	16.4	3,747	.05	3,480	7' 7"	12' 9"
R25Z-9AK	24.9	5,690	.09	4,030	7' 11"	14' 3"
R35Z-9	26.5	8,050	.14	6,280	10' 4"	17' 2"
R55-9A	65.1	12,460	.24	8,490	12' 6"	19' 9"
R60CR-9A	66.9	13,010	.24	9,190	11' 9"	19' 9"
R80CR-9	59.6	18,190	.37	12,570	13' 7"	22' 5"
R80CR-9A	65.1	18,190	.37	12,570	13' 7"	22' 5"
R125LCR-9A	100	27,560	.59	24,890	16' 7"	24' 10"
R145LCR-9A	116	32,610	.93	19,620	18' 1"	28' 4"
R235LCR-9A	157	53,620	1.75	29,980	22'	32' 2"
R140LC-9A	116	30,820	.93	19,620	20'	28' 4"
R160LC-9A	128	39,240	1.16	24,250	19' 11"	29' 1"
R180LC-9A	128	41,560	1.37	24,250	19' 11"	29' 1"
R220LC-9A	157	49,640	1.75	29,980	20' 5"	32' 3"
R260LC-9A	178	56,880	1.96	35,270	23'	33' 5"
R300LC-9A	212	68,260	2.42	37,920	24' 3"	34' 10"
R330LC-9A	268	74,960	2.75	42,550	24' 2"	35' 11"
R380LC-9A	290	86,200	3.03	45,190	24' 8"	38' 3"
R480LC-9A	352	108,420	3.96	49,600	25' 7"	40' 11"
R520LC-9A	352	114,820	4.19	56,880	26' 11"	40' 9"
R1200LC-9A	352	260,140	8.76	115,080	26' 3"	43' 11"
R55W-9A*	65.1	5,910	.24	8,490	11' 6"	19' 7"
R140W-9A*	136	30,200	.93	19,620	15' 11"	25' 3"
R180W-9A*	153	40,960	1.37	24,250	19' 5"	28' 4"
R210W-9A*	163	45,200	1.75	29,320	20' 11"	32'

\*Wheeled

## Mustang

Equipment downtime on a job-site is detrimental to profitability. If you're a contractor trying to fix the machine, getting that equipment back to work quickly is critical. Mustang has made service easy and simple on its Tier 4 excavators by displaying error codes on the unit's LCD screen and readily visible sight glass fluid level indicators. Once an issue is identified, pressure check-points and fuses are accessible through tool-free access panels.

Indicate 20 on inquiry card



Mustang						
Model	Net HP	Operating Weight (lbs.)	Std. Bucket (cu. yds.)	Breakout Force (lbs.)	Max. Dig Depth	Max. Reach at Ground Level
170Z NXT2	14.5	3,836	.06	3,417	7' 2.6"	12' 2.1"
250Z	19.7	6,217	.16	4,079	9' 8"	15' 9"
350Z NXT2	23.9	8,214	.16	5,643	10' 8"	17' 3.5"
450Z NXT2	37.7	10,814	.24	6,497	11' 7.8"	18' 10"
800Z NXT2	54.6	18,136	.44	11,332	14' 4.4"	23' 5.1"



**THEY SAY TO LET  
SLEEPING DOGS LIE.  
NO MENTION OF CATS THOUGH.**

PRESENTING THE 1050K. A WAKE-UP CALL FOR THOSE  
WHO'VE RESTED ON THEIR LAURELS LONG ENOUGH.

With the all-new 1050K, you're not just getting a long-overdue choice in dozer size. You're getting the head-busting power of a proven hydraulic drive. And Ecomatch reduces fuel consumption by up to 5% with our leading productivity. Best designed. Best run. Effectively. And backed by a world-class service and parts program dedicated exclusively to the production-class market. The choice is yours. But you'll want to head to work early. For details, visit your local dealer or [jdh.com](http://jdh.com).



**JOHN DEERE**



## Takeuchi

Takeuchi has enhanced its excavator lineup to help facilitate easier and quicker serviceability. The redesigned body allows for ground-level panoramic serviceability with the service access hood, which eliminates the need for a tilting operator station. It provides optimal access to the control valve, hydraulic lines, hydraulic tank and pattern change valve.

Indicate 22 on inquiry card

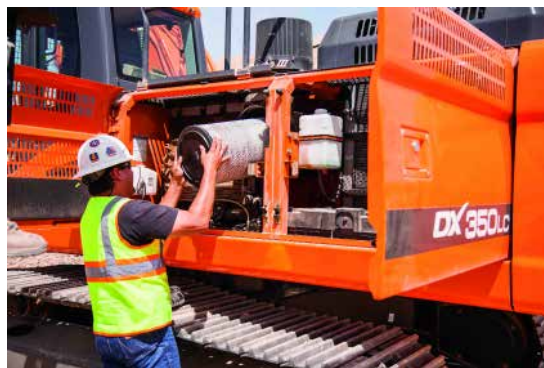
Takeuchi						
Model	Net HP	Operating Weight (lbs.)	Std. Bucket (cu. yds.)	Breakout Force (lbs.)	Max. Dig Depth	Max. Reach at Ground Level
TB108	9.6	2,033	-	3,157	5' 6"	9' 6"
TB016	13.5	3,524	-	4,079	7' 9.5"	12' 9"
TB216	15	3,902	-	4,250	7' 10"	13' 2.9"
TB228	23.5	6,100	-	6,471	9' 5"	15' 6"
TB230	24.4	6,607	-	6,471	10' 2"	15' 5.4"
TB235	28.8	7,650	-	8,582	11' 2"	17' 6"
TB138FR*	28.8	8,316	-	8,955	10' 11"	18'
TB240	35.8	8,289	-	9,959	11' 6"	17' 9.6"
TB250	38	10,650	-	11,031	12' 5"	19' 8"
TB153FR*	38.7	12,450	-	11,093	12' 10"	20' 4"
TB260	47.6	12,125	-	12,756	12' 9.4"	20' 1.4"
TB180FR*	64.6	18,370	-	16,335	14' 11"	23' 7"
TB285	69.2	18,780	-	16,565	15'	24' 5"
TB280FR	69.2	19,077	-	16,335	14' 11"	23' 7"
TB290	69.2	18,780	-	16,565	15'	24' 5"
TB1140	103.3	34,116	-	22,188	18'	28' 9"

\*Zero swing

## Doosan Infracore

Centralized arm and boom grease points on Doosan excavators make it easy to perform daily maintenance. Excavator owners can access all filters and regular inspection points at ground level. In addition, access panels are easy to find and open from the top, bottom and sides of the machine. A large engine bonnet provides ample room to reach the top side of the diesel engine, while a hinged belly pan allows access from the bottom.

Indicate 23 on inquiry card



Doosan Infracore Construction Equipment America						
Model	Net HP	Operating Weight (lbs.)	Std. Bucket (cu. yds.)	Breakout Force (lbs.)	Max. Dig Depth	Max. Reach at Ground Level
DX63-3	58.6	13,779	.08-.38	9,731	13' 6"	20' 5"
DX85R-3	58.6	18,960	.13-.53	14,509	15' 6"	23' 11"
DX140LC-5	113	32,783	.30-.85	24,471	20' 1"	27' 11"
DX140LCR-5	113	34,987	.30-.85	24,471	19' 7"	27' 11"
DX180LC-5	129	43,224	.38-1.26	28,881	20'	29' 7"
DX225LC-5	162	52,086	.61-1.45	39,463	22' 4"	32' 9"
DX225LC-5 SLR	162	55,731	.30-.85	22,046	38' 2"	50'
DX235LCR-5	181	56,019	.61-1.45	35,274	21' 10"	31' 7"
DX255LC-5	184	57,752	.61-1.45	39,463	22' 4"	32' 9"
DX300LC-5	267	68,764	.66-2.17	44,092	23' 11"	34' 6"
DX300LC-5 SLR	267	72,462	.38-.98	23,149	45' 2"	57'
DX350LC-5	313	80,654	1.00-2.38	57,100	24' 8"	35' 11"
DX420LC-5	338	94,799	1.52-3.26	59,745	25' 4"	37'
DX490LC-5	373	112,206	2.13-3.96	67,902	25' 6"	38' 11"
DX530LC-5	373	116,576	2.13-3.96	67,902	24' 1"	37' 6"
DX530LC-5 SLR	373	117,112	1.13-1.80	33,510	49' 7"	63' 9"
DX140W-5*	132	33,731	.30-.71	23,303	14' 9"	24' 2"
DX190W-5*	168	43,431	.50-1.22	30,424	18' 9"	29' 8"
DX210W-5*	186	46,078	.67-1.67	35,274	19' 4"	31' 2"

SLR = Super-long reach \*Wheeled



## John Deere

John Deere designed the new 300G LC excavator with a larger hood for improved engine access. The new handrails help maintain contact when climbing the upperstructure to service the engine, improving service accessibility and security. Other improvements include single-side ground level fluid filter service, which moves the engine oil, fuel and hydraulic pilot oil filters to ground level on the right side of the machine and adds a service door for easy access to change filters.

Indicate 24 on inquiry card

John Deere Construction & Forestry						
Model	Net HP	Operating Weight (lbs.)	Std. Bucket (cu. yds.)	Breakout Force (lbs.)	Max. Dig Depth	Max. Reach at Ground Level
17G	14.5	3,790	.05	3,597	7' 2"	12' 6"
26G	20	6,110	.048-.16	4,994	8' 6"	15' 2"
35G	23.3	7,760	.048-.21	6,085	10' 1"	17' 1"
50G	35.9	10,847	.078-.31	8,267	11' 7"	19' 7"
60G	53	13,547	.122-.46	9,237	12' 4"	20' 5"
75G	56.9	18,221	.31-.64	10,476	15' 2"	22' 2"
85G	56.9	19,564	.31-.64	10,476	14' 10"	24' 9"
130G	97	29,489	.48-.83	21,480	19' 11"	28' 5"
160G LC	121	39,685	.54-1.11	26,665	21' 4"	30' 1"
180G LC	121	44,317	.71-1.29	28,244	23' 2"	32' 1"
190G W*	159	44,530	.79-1.29	24,055	19' 2"	33' 9"
210G LC	159	50,463	.9-1.29	35,138	21' 11"	32'
230G W*	159	53,220	.79-1.29	31,698	20' 8"	31' 5"
245G LC	159	56,167	.9-1.29	35,522	21' 9"	32' 6"
250G LC	188	57,800	1.4-1.8	36,869	25'	35' 3"
300G LC	223	68,674	.94-1.6	45,411	25' 10"	36' 5"
350G LC	271	78,550	1.3-2.4	50,628	18' 5"	30' 1"
380G LC	271	83,992	1.3-2.4	50,628	24' 3"	35' 9"
470G LC	367	108,952	1.8-4.2	64,295	27' 2"	40' 3"
670G LC	463	158,045	2.9-6.0	72,838	30'	44' 8"
870G LC	532	193,255	3.3-7.6	89,699	32'	48'

\*Wheeled



## Sany America

Sany America has developed a telematics solution that allows owners and fleet managers to monitor and manage their heavy equipment in North America. With SanyLIVE, customers receive real-time diagnostic and condition alerts, notifying them of any upcoming scheduled maintenance, equipment service needs or even insights to the possibility of future component failures. The system comes pre-installed with a three-year subscription included.

Indicate 25 on inquiry card

Sany America						
Model	Net HP	Operating Weight (lbs.)	Std. Bucket (cu. yds.)	Breakout Force (lbs.)	Max. Dig Depth	Max. Reach at Ground Level
SV235C-LR	195	63,074	.8	19,873	46' 7"	54' 4"
SV16C	15.6	8,333	.05	3,417	7' 8"	12' 10"
SV35C	27.4	16,050	.07-.22	6,834	10' 2"	17' 6"

# UPTIME SHOULDN'T BE COMPLICATED.

With SmartCare, it's guaranteed.



**Simplify fleet management with Volvo *SmartCare*.**

**Volvo SmartCare is a comprehensive dealer support program that simplifies fleet management and increases uptime by providing maintenance experts, guaranteed service agreements, fuel efficiency and uptime guarantees, and more. With SmartCare, maintenance is absolutely *SmartCare*.**

**Talk to a Volvo dealer today, or visit [volvoconstruction.com/SmartCare](http://volvoconstruction.com/SmartCare).**

**SMART WORKS.<sup>®</sup>**

Indicate 26 on inquiry card

**Volvo Construction Equipment**





## Kubota

Kubota's compact excavators are built to last, with features that make serviceability and maintenance more convenient. The 6-in-1 Blade for the KX040-4 is designed with a standard Bolt-On Cutting Edge (BOE) that protects the blade. The tilt cylinder is covered for durability and protection from soil and rocks, and the reversible cutting edge is divided into two sections to easily invert the edge for easy maintenance and simple replacement.

Indicate 27 on inquiry card

Kubota Tractor Corp.						
Model	Net HP	Operating Weight (lbs.)	Std. Bucket (cu. yds.)	Bucket Digging Force (lbs.)*	Max. Dig Depth	Max. Reach at Ground Level
K008-3	10.1	2,200	.3-.78	2,200	5' 8"	9' 11"
U17	15.1	3,703	.49-1.5	3,417	7' 7"	12' 7"
KX018-4	15.5	3,748	.49-1.5	3,594	7' 9.7"	12' 8"
U255	19.8	5,625	1.0-3.3	5,765	9' 3"	15' 4"
KX71-35	23.1	6,305	1.9-4.25	6,305	9' 9"	16'
KX91-352*	26.9	7,110-7,540	1.9-4.25	8,059	10' 5"	16' 10"
U35-4*	23.9	8,129-8,478	1.9-4.25	7,924	9' 8.9"	16' 11.3"
KX040-4**	38.9	9,195-9,900	1.9-6.6	9,535	11' 2.6"	17' 9"
U55-4*	45.2	11,915-12,335	3.0-8.5	11,177	11' 10"	19' 6"
KX057-4*	45.2	12,200-12,620	3.0-8.5	11,177	12' 8"	20' 1"
KX080-4*	62.3	18,280-19,140	6.5-13.5	14,660	15' 1.1"	23' 6.3"

\*Available with angle blade \*\*Available w/angle blade or 6-in-1 blade \*Normal (N) digging forces; otherwise Boost values shown

## Kobelco

Kobelco Tier 4 Final crawler excavators will incorporate both selective catalytic reduction (SCR) and self-cleaning diesel particulate filter (DPF) systems. This combination delivers the lowest possible operating costs due to very low diesel exhaust fluid consumption. The SCR/DPF system has enabled the engine to be fine-tuned for peak performance and response. Further efficiency has been accomplished via an evaluation of the hydraulic and control systems to reduce parasitic losses to the absolute minimum while maintaining peak productivity. Service intervals and the related expenses are similarly optimized for low operating expenditures.

Indicate 28 on inquiry card



Kobelco						
Model	Net HP	Operating Weight (lbs.)	Std. Bucket (cu. yds.)	Breakout Force (lbs.)	Max. Dig Depth	Max. Reach at Ground Level
SK175R	13.5	3,836	.06	2,833	7' 3"	12' 2"
SK275R	19.7	5,886	.1	4,546	9' 2"	15' 3"
SK355R	23.1	8,214	.14	7,216	10'	17' 1"
SK555SRX	37.4	11,050	.21	11,128	12' 10"	20' 6"
SK755R	55	17,100	.14-.46	7,700	15'	25' 5"
SK85CS	55	18,700	.14-.46	10,600	13' 9"	23' 9"
SR140 SRLC	92.8	33,100	.31-.90	20,502	19' 7"	28' 4"
ED160 Blade Runner	92.8	35,700	.31-.90	18,100	19' 1"	28' 10"
SK210LC	157	48,500	.92-1.22	29,337	22'	31' 11"
SK230SRLC	157	55,100	.67-1.22	24,300	21' 7"	31' 3"
SK260SRLC	157	59,300	.67-1.22	29,337	21' 9"	31' 9"
SK260LC	176	56,890	1.05-1.83	35,002	23'	33' 3"
SK350LC	270	82,200	.85-2.75	45,900	24' 10"	36' 3"
SK500LC	345	111,400	1.77-3.14	52,600	25' 7"	38' 10"
SK850LC	510	181,440	1.78-7.06	90,598	31' 10"	46' 11"
SK210LC Long Arm	157	52,000	.92-1.22	29,337	39' 5"	51' 7"
SK260LC Long Arm	184	60,400	1.05-1.83	35,002	48' 4"	60' 6"



## Volvo

Volvo E-Series excavators have filters that are grouped and easily accessible from ground level for ease of serviceability. The radiator, charged air cooler and hydraulic oil cooler are positioned side by side in a single layer, which reduces blockages, aids cleaning and maximizes efficiency with access from ground level by opening a side door. Real-time service alerts are displayed on the color monitor in the cab for diagnostic checks, with separate service intervals for engine oil/filter, fuel filter/water separator, hydraulic oil and hydraulic oil filter.

Indicate 29 on inquiry card

Volvo Construction Equipment						
Model	Net HP	Operating Weight (lbs.)	Std. Bucket (cu. yds.)	Breakout Force (lbs.)	Max. Dig Depth	Max. Reach at Ground Level
EC20C	16.8	4,277	1.06-4.06*	4,159	7' 4"	13'
ECR25D	20.9	5,489	.097	4,554	9' 1"	15' 1"
ECR38	27.6	7,355	1.30-5.40*	6,463	8' 10"	15' 8"
EC35C	36.3	7,848	1.51-5.78*	6,955	11' 3"	16' 7"
EC55C	47.1	12,566	2.8-8.3*	9,302	12' 4"	19' 7"
ECR58D	47	12,550	.31-.91	7,780	12' 11"	20' 5"
EC140D	113	29,460	.27-.95	18,560	18' 2"	26' 10"
ECR145D	172	33,430	.52-1.18	18,150	18' 1"	26' 11"
EC160D	139	38,320	.33-1.31	22,900	19' 10"	28' 11"
EC220D	172	48,800	.68-2.75	29,240	22' 1"	32' 1"
ECR235D	172	54,350	.52-1.18	28,400	20' 7"	31' 11"
EC250D	202	56,190	.63-2.42	34,270	22' 11"	33' 1"
EC300D	227	67,260	.68-2.64	37,660	24' 1"	34' 6"
EC340D	279	77,240	1.77-3.92	54,561	26' 8"	38' 4"
EC380D	279	85,800	1.77-3.92	63,935	26' 8"	38' 4"
EC380E	302	94,800	1.1-3.3	48,335	26' 6"	37' 9"
EC480E	277	100,310	1.2-2.7	51,616	30' 1"	43' 2"
EC480D	329	105,600	2.31-4.97	54,555	29' 8"	43' 6"
EC700C L	424	152,150	3.17-8.63	80,030	27' 7"	42' 4"
EW160D**	150	35,715-40,125	.94-1.33	28,700	18' 5"	29'
EW180D**	169	39,900-44,750	.92-1.30	30,574	20' 1"	31' 4"
EW210D**	169	43,430-50,265	.92-1.30	33,500	21' 3"	32' 7"

\*Cubic feet \*\*Wheeled

## Liebherr

Liebherr excavators are designed to provide ease of maintenance and serviceability. Generously sized cooling units arranged side by side ensure constant uniform cooling. A swing-out AC condenser with hinged knobs allows for easy cleaning. Service points are readily accessible and grouped together for routine maintenance. Fully automatic central lubrication is standard. A sloping angle in the undercarriage design allows for easy clean-out. The LiDAT data transmission and positioning system can be used to monitor optimal equipment operation and plan and prepare service and maintenance intervals.

Indicate 30 on inquiry card



Liebherr						
Model	Net HP	Operating Weight (lbs.)	Std. Bucket (cu. yds.)	Breakout Force (lbs.)	Max. Dig Depth	Max. Reach at Ground Level
A924*	173	47,200-58,400	.72-2.16	41,900	23' 2"	34' 9"
R924	154	51,810-60,850	1.0-2.15	40,016	22' 6"	33'
R926	173	56,660-63,825	1.5-2.3	42,990	20' 10"	36' 5"
R936	215	67,350-76,610	.92-2.1	37,260	23' 2"	35' 1"
R 946	268	84,657-92,484	1.60-3.3	46,738	25' 3"	37' 11"
R 956	322	109,350-125,885	1.63-4.32	70,325	26' 11"	41'
R 966	429	145,505-168,215	2.0-7.2	79,500	29' 1"	43'
R 976	536	188,055-210,540	2.62-7.3	109,032	30' 8"	46' 2"

\* Wheeled

- SAFETY** Never Climb Over an Attachment
- COMFORT** Up to 46% Larger Cab
- VISIBILITY** Industry's Best With 27 0°
- SERVICE** T4F Engine | No Aftertreatment
- EFFICIENCY** 10% Fuel Savings Versus T3


**TIME TO SWITCH!**  
TO **JCB**



Now 's the Time to Switch to the World's Safest Skid Steer. JCB is celebrating 70 years in the construction equipment business. To commemorate this milestone anniversary, JCB is offering one of its most aggressive finance programs on the complete range of 18 models.

Learn more at your local dealer or visit [www.jcbna.com](http://www.jcbna.com) today.





Star 70th Anniversary gift to you!

**0%** FINANCING | **70** MONTHS

FINANCING | 70 MONTHS | 0% FINANCING

Additional terms apply. All applicants under this plan are subject to credit approval by JCB Finance. Please contact your local participating JCB dealer for further details. Offer valid through June 30, 2023.

Indicate 31 on inquiry card



## Terex

Built for consistent, reliable jobsite performance, Terex compact excavators are manufactured with top-mounted, inverted boom cylinders and spherical bearings. The inverted boom helps to protect the cylinder seals and the hoses from dirt buildup and offers protection from the elements, extending the life of these machines' vital components.

Indicate 32 on inquiry card



### Terex Construction Americas

Model	Net HP	Operating Weight (lbs.)	Std. Bucket (cu. ft.)	Breakout Force (lbs.)	Max. Dig Depth	Max. Reach at Grade
TC16	18	3,800	1.38-5.18	3,237	7' 3"	12' 10"
TC20	18	4,465	1.38-5.18	3,530	7' 3"	13' 9"
TC29	25	6,450	1.4-4.0	4,788	9' 2"	15' 9"
TC35	30	7,780	1.4-6.4	5,530	11' 2"	18' 1"
TC37	30	8,050	1.4-6.4	5,535	10' 6"	18' 1"
TC48	39	10,495	2.5-6.2	6,879	12' 2"	19' 8"
TC50	36	11,070	2.5-13.2	7,014	12' 2"	20' 4"
TC60	43	12,460	2.5-6.2	8,992	12' 2"	20' 4"
TC75	73	16,535	3.3-10.3	11,960	13' 11"	23' 10"
TC125	100	27,560	.34-.70*	18,338	14' 2"	26' 1"

\* Cu. yds.

## LiuGong

LiuGong D-Series excavators feature rigid x-type crawler car bodies, a larger beam section in the upper frame and oil-sealed track rollers, carrier rollers and idlers on the undercarriage to provide added durability in rugged conditions. An emergency bypass switch enables them to operate indefinitely in the event of an electrical problem with the main CPU or its components. The self-monitoring control system reads engine speed, fluid pressures and temperatures, lubricant status and fuel capacity and alerts the operator if a function exceeds its parameter. Ground-level side access panels to hydraulic pumps and engine filters enables safe, easy service.

Indicate 33 on inquiry card



### LiuGong Construction Machinery North America LLC

Model	Net HP	Operating Weight (lbs.)	Std. Bucket (cu. meters)*	Breakout Force (lbs.)	Max. Dig Depth	Max. Reach at Ground Level
915D	102	30,644	.55/.73	-	17.95'	26.95'
CLG922D	142	48,501	1.0/1.1	-	21.7'	31.84'
CLG925D	173	56,217	1.2/1.3	-	23.02'	33.56'
CLG936D	260	79,806	1.6/2.3	-	24.08'	35.76'
CLG950E	376	105,820	2.2/2.2	-	40.94'	40.94'

\*SAE heaped min/max

## Yanmar America

The Yanmar ViO series true zero tailswing excavators are designed to create optimal access to all maintenance items while maintaining a compact overall design. They feature a full open rear bonnet, removable panels in the front of the machine and a lift up seat. All daily service checks are easily accessible including oil, coolant, fuel and hydraulic fluid. The key components of the hydraulic system can be accessed under the seat and front panels and most machine repairs can be made with minimal disassembly.

Indicate 34 on inquiry card



### Yanmar America

Model	Net HP	Operating Weight (lbs.)	Std. Bucket (cu. yds.)	Breakout Force (lbs.)	Max. Dig Depth	Max. Reach at Ground Level
SV08-1B	10.3	2,348	.029	2,360	5' 4"	8' 11"
Vi017-A	14.5	3,836	.065	3,418	7' 7"	12' 2"
Vi025-6A	20.4	5,919	.105	5,516	10' 4"	15' 9"
Vi035-6A	24.4	7,905	.149	7,216	11' 3"	17' 3"
Vi045-6A	39	10,373	.183	9,158	12' 3"	18' 10"
Vi055-6A	47.6	11,806	.209	10,347	13' 6"	20' 2"
Vi080-1A	56.9	18,136	.366	14,275	15' 4"	23' 5"
SV100-2B	73	21,550	.4	17,087	15' 9"	24' 3"

## Komatsu America

Komatsu's new Tier 4 Final emissions-compliant Dash 11 excavators are designed to make the transition to diesel exhaust fluid (DEF) easy and simple. A large-capacity DEF tank extends operating time before required refills. A DEF tank sight gauge makes it easy to check fluid levels without turning on the monitor. With enhanced KOMTRAX capabilities and a new smartphone app, machine health and performance information is within easy reach, on the job and off.

Indicate 35 on inquiry card



### Komatsu America Corp.

Model	Net HP	Operating Weight (lbs.)	Std. Bucket (cu. yds.)*	Bucket Digging Force (lbs.)	Max. Dig Depth	Max. Reach at Ground Level
PC35MR-3	29	7,909	.07-.25	6,725	11' 4"	18' 1"
PC45MR-5	38.2	10,975	.11-.36	7,630	12'	19' 4"
PC55MR-5	38.2	11,581	.11-.36	8,770	12' 6"	19' 11"
PC78US-10	65.5	17,747	.12-.44	13,780	15'	22' 3"
PC88MR-10	65.5	18,558	.12-.44	13,780	15' 3"	23' 5"
HB215LC-1	139	48,175	.66-1.57	31,080	21' 9"	31' 10"
PC138USLC-10	93.5	32,628	.34-1.00	20,950	18'	26' 10"
PC170LC-10 Heavy spec	115	41,600	.48-1.24	24,407	19' 7"	28' 10"
PC170LC-10 Std. spec	115	38,100	.48-1.24	24,407	19' 7"	28' 10"
PC210LC-10	158	52,036	.66-1.57	33,510	21' 9"	31' 10"
PC210LC-11	165	53,045	.66-1.57	33,510	21' 9"	31' 10"
PC228USLC-10	158	55,335	.66-1.57	29,762	21' 9"	31' 10"
PC240LC-11	177	56,380	.76-1.85	34,170	22' 8"	32' 10"
PC290LC-11	196	71,540	.76-2.13	39,660	22' 8"	34' 4"
PC360LC-11	257	80,320	.89-2.56	44,970	24' 3"	35' 10"
PC390LC-11	257	89,940	.89-2.91	44,970	23' 10"	35' 8"
PC490LC-11	359	107,850	1.47-4.15	53,790	25' 5"	38' 9"
PC490LC-11 Var. Gauge	359	110,220	1.47-4.15	53,790	25' 5"	38' 9"
PC650LC-8	429	143,411	2.05-4.98	64,150	27' 10"	42'
PC650LC-8 SE	429	146,390	2.05-4.98	70,040	23' 2"	37' 1"
PC800LC-8	487	188,670	2.23-5.93	72,750	28' 3"	44' 2"
PC800LC-8 SD	487	188,670	2.23-6.0	77,600	28' 3"	44' 2"
PC800LC-8 SE	487	188,670	2.23 7.8	96,120	23' 5"	39' 2"
PC1250-8	672	239,880	4.4-6.8	94,800	30' 8"	49' 3"
PC1250LC-8	672	250,154	4.4-6.8	94,800	30' 8"	49' 3"
PC1250SP-8	672	244,050	8.8	112,900	25' 11"	44' 10"
PC2000-8	956	440,920	15.7-17.9	140,600	30' 4"	50' 3"

\*SAE heaped

## IHI Compact Excavator Sales LLC

New from IHI for 2015, the V4 zero tailswing compact excavators are specifically designed with ease of maintenance in mind. Larger engine and side covers allow complete access to the Tier 4 Final engine, control block and self-pressurizing hydraulic system. The standard Eco-Friendly Auto Idle selector switch will automatically return the engine rpm to idle if the unit is not operated within five seconds, boosting fuel savings 24% vs. the prior VX-3 models. This equals dollars in your pocket and less wear and tear on the engine.

Indicate 36 on inquiry card



### IHI Compact Excavator Sales LLC

Model	Net HP	Operating Weight (lbs.)	Std. Bucket (cu. yds.)	Breakout Force (lbs.)	Max. Dig Depth	Max. Reach at Grade Level
9V4	-	2,060	.03	2,360	5' 2"	9' 9"
9VXE-Electirc	5*	2,060	.03	2,360	5' 2"	9' 9"
17VX3	13.4	3,850	.06	5,447	7'	12' 4"
17VXE-Electric	15**	3,583	.06	5,447	7'	12' 4"
25VX3	18.42	6,175	.1	5,698	8' 3"	14' 9"
30V4	22.8	7,075	.12	7,100	9' 10"	17'
35V4	22.8	8,100	.15	7,688	11' 1"	18' 2"
35N-3	26.7	7,759	.14	7,662	10' 4"	16' 8"
45V4	44	10,802	.17	9,854	11' 9"	19' 7"
55V4	44	11,800	.21	10,850	12' 7"	20' 4"
55N-3	54.7	12,733	.15	11,070	12' 8"	20' 1"
60V4	44	12,128	.26	12,100	13' 3"	21' 2"
80VX-3	58.7	18,100	.32	14,730	15' 1"	23' 4"

\*Baldor electric motor \*\*Rueland electric motor

**GOT A BEAST OF A JOB?**

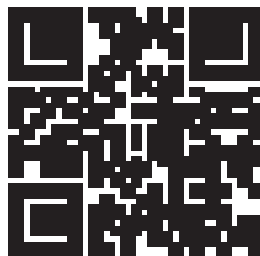


**TAKE A BIGGER BITE.**

With the Pro-Clamp<sup>®</sup> system for Bobcat<sup>®</sup> excavators, you can take a bigger, more aggressive bite on demand to securely clamp down on large objects.

**Bobcat**

**THE BEST. PERIOD.**



**SEE HOW EASY TO INSTALL TODAY!  
JOIN WITH THE PRO CLAMP SYSTEM**

**Product Code:**

**Bobcat.com/Pro**

**18072481000**

**Bobcat.com/Pro**

**Bobcat.com/Pro**

Indicate 37 on inquiry card



## Hitachi

Maintenance on Hitachi's FT4 excavators is simplified with features such as grouped filters near the hydraulic tank and a large hood that is easily opened for engine access. In addition, upperstructure handrails provide added safety when servicing the engine compartment. Extremely efficient combustion and an improved piston design allow the Isuzu engines to burn particulate matter in-cylinder. This eliminates the need for a diesel particulate filter (DPF).

Indicate 38 on inquiry card

## Hitachi

Model	Net HP	Operating Weight (lbs.)	Std. Bucket (cu. yds.)	Breakout Force (lbs.)	Max. Dig Depth	Max. Reach at Ground Level
ZX17U-5	14.5	3,790	.02-.05	3,597	7' 2"	12' 6"
ZX27U-5	20	6,110	.05-.16	4,994	8' 6"	15' 2"
ZX35U-5	23.3	7,760	1.3-5.9*	6,085	11' 4"	18' 11"
ZX50U-5	35.9	10,560	2.1-8.3*	8,267	12' 7"	20' 6"
ZX60USB-5	53	13,547	5.1-12.5*	9,237	13' 6"	21' 6"
ZX75US-5	56.9	17,952	.31-.64	10,467	15' 1"	22' 2"
ZX85USB-5	56.9	19,244	.4-.66	10,467	14' 1"	24' 9"
ZX130-5	97	26,454	.48-.99	23,435	19' 11"	28' 5"
ZX135US-5	97	32,819	.48-1.01	21,480	19' 7"	28' 7"
ZX160LC-5	121	36,487	.48-1.11	25,180	19' 7"	30' 1"
ZX180LC-5	121	40,419	.52-1.43	28,552	21' 7"	32' 1"
ZX190W-5 Monoblock Boom**	159	44,530	.52-1.97	20,458	19' 2"	31' 5"
ZX190W-5 Two-piece Boom**	159	45,300	.52-1.97	20,458	19' 5"	31' 1"
ZX210-5	159	47,137	.52-1.43	35,522	21' 11"	31' 12"
ZX210LC-5	159	53,936	.52-1.43	35,522	21' 11"	32'
ZX230W-5 Monoblock Boom**	159	52,030	.52-1.97	25,628	20' 8"	33' 9"
ZX230W-5 Two-piece Boom**	159	53,220	.52-1.97	25,628	20' 2"	32' 11"
ZX245USLC-5	159	56,167	.52-1.43	35,522	21' 9"	32' 6"
ZX250LC-6	177	55,689	1.0-1.9	42,489	25'	35' 3"
ZX300LC-6	249	64,375	.9-1.6	45,411	25' 10"	36' 5"
ZX350LC-6	271	77,360	1.3-2.78	55,303	26' 10"	38' 3"
ZX380LC-6	271	82,276	1.3-2.78	55,303	26' 10"	38' 3"
ZX470LC-5	367	108,952	1.8-4.2	64,295	27' 2"	40' 3"
ZX470LC-5 Mass Excav.	367	110,502	1.8-4.2	64,071	20' 5"	34' 10"
ZX670LC-5	463	158,045	1.3-6.6	72,838	30'	44' 8"
ZX670LC-5 Mass Excav.	463	157,969	1.3-6.6	82,954	23' 4"	37' 9"
ZX870LC-5	532	193,255	2.0-7.6	89,699	31' 5"	48'
ZX870LC-5 Mass Excav.	532	193,803	2.0-7.6	106,110	23' 5"	39' 5"
EX1200-6 BE Mass Excav.	740	246,917	8.8	127,686	26' 5"	43' 10"
EX1200-6 Shovel	740	251,327	8.5	133,537	15' 8"	N/A
EX1900-6 BE Mass Excav.	1,039	423,280	5.7	150,800	26' 10"	48' 6"
EX1900-6 Shovel	1,039	421,075	19.6	148,400	19' 5"	N/A
EX2600-6	1,500	556,000	22.2	186,509	27' 1"	52' 8"
EX2600-6 Shovel	1,500	556,000	21.6	212,000	12' 3"	N/A
EX3600-6	1,994	791,500	29	236,000	28' 2"	57' 9"
EX3600-6 Shovel	1,994	795,900	30	254,000	12'	N/A
EX5600-6	3,000	537,000	44.5	332,717	28' 11"	63' 8"
EX5600-6 Shovel	3,000	533,000	38	357,446	15' 9"	N/A
EX8000-6 Shovel	3,880	1,787,900	52.3	501,000	13' 5"	N/A

\*Cubic feet \*\*Wheeled

# Attachment Spotlights



## Bullrite™ Handlers and Attachments

The Bullrite Trash Handling & Sorting Grapple is an extremely diverse tool, capable of handling a wide variety of materials. Designed for 16-24 Metric Ton Excavators, it is ideal for handling, sorting and tamping Municipal Solid Waste, handling and sorting C&D debris, handling woody debris, etc. It features continuous rotation on a heavy duty, 20" bearing, along with bolt on replaceable cutting edges.

530 Recycle Center Drive  
Two Harbors, MN 55616  
U.S.A.

Indicate 148 on inquiry



## Volvo Construction Equipment

Volvo offers one of the industry's most robust lineups of excavators, including more than 25 models – both wheeled and crawler – ranging in size from the compact 2-ton class to high reach demolition machines, 70-ton-class and everything in between. And all Volvo excavators are backed by a fuel efficiency guarantee and lifetime boom, arm and frame warranty.

- Along with the breadth of machines comes an equally robust selection of attachments, including an assortment of quick couplers, buckets, tools and tooth options for a variety of different applications.

- For a full list of excavators and available attachments, visit [volvoce.com](http://volvoce.com), or download our exclusive Attachment Selector app for your mobile device by visiting the Google Play or iTunes store.

312 Volvo Way  
Shippensburg, PA 17257  
United States

Indicate 53 on inquiry



## Gensco America, Inc.

The most versatile of all grabs. Wood, bundles of branches, pipes, rubble, sand, gravel ... this grab can handle everything. Suitable for digging in soil and clay. By fitting side plates that can be supplied separately you can also use the grab for loading gravel, stone chippings, powder etc.

- A patented double-walled cylinder and a non-return valve built into the cylinder are standard.

- Very low maintenance requirements and durable. Clamshell buckets, orange peel grapples, log grabs and products for the rail industry.

- Hydraulic, electric and mechanical versions.

Call 1-800-268-6797  
Serving Industry World Wide Since 1919  
[www.genscoequip.com](http://www.genscoequip.com)  
[info@genscoequip.com](mailto:info@genscoequip.com)

Indicate 149 on inquiry



# BUILT LIKE NO OTHER.

- NO TIME LIMIT POWER BOOST
- INDUSTRY-LEADING SAFETY FEATURES
- EXCLUSIVE INDEPENDENT TRAVEL
- BEST-IN-CLASS FUEL ECONOMY

## WE'VE GOT EXCLUSIVE FEATURES TO GET MORE DONE

With KOBEKO excavators on the job, you'll be prepared for even the toughest worksite challenges. That's because we're committed to building productivity-boosting features in our machines you won't find anywhere else. While other machines may offer power boost, ours is unlimited and operator-controlled. Then there's the exclusive independent travel feature that lets you dig, lift and travel at the same time. We even thought of the little things, like swing flashers and industry-leading visibility that enhance safety. Plus with premier operator comforts, you might actually enjoy operating our machines.



5000

5000-5000

5000-5000

# KOBEKO

Indicate 42 on inquiry card