



For Earth, For Life
Kubota

SSV

KUBOTA SKID STEER LOADER SSV65/SSV75

The outstanding power and exceptional comfort of Kubota's new Skid Steer Loaders take high-performance and productivity to a new level.

New standards in skid steer loader performance and operator comfort.

It's all-new, inside and out, and ready for any job you give it. From Kubota, the well-known compact excavator brand, comes a new skid steer loader designed to get the job done faster and keep you working comfortably.

Outstanding performance

High productivity requires versatility—like travelling at low- or high-speed ranges, or handling multiple functions such as grappling, or drilling and augering. Of course, that work needs this kind of abundant power.

	SSV65	SSV75
Engine (Gross)	64 HP 47.7 kW	74.3 HP 55.4 kW
Rated operation capacity-50% tipping load	1950 lbs. (885 kg)	2630 lbs. (1193 kg)
Breakout force Bucket	4839 lbf. (2195 kgf)	5884 lbf. (2669 kgf)
Lift arm	3858 lbf. (1750 kgf)	4850 lbf. (2200 kgf)

Exceptional comfort

More operator comfort means more productivity. It all begins in a roomy, fatigue- and stress-reducing cabin that encourages all-day alertness. A wider entrance affords effortless entry and exit—while the sliding front door can be opened regardless of the loader position. Of course, Kubota comfort also comes in the form of a dust-resistant pressurized cabin, with an optimized air conditioning and climate control system.

Features

Sliding front door

Standard on the Skid Steer Loader Series is Kubota's ingenious sliding front door. Operators appreciate that the door can be opened regardless of the loader position, allowing entry or exit even in difficult situations.

Side Light

As a standard feature on Kubota's new skid steer loader, the new side light feature expands the operator's visibility on the job site at night for a more productive and safe work environment.

Optional multi-function lever

Allows fingertip control of all major vehicle and implement operations.

Left Control Lever



- A. Horn
- B. KSR
(Kubota Shockless Ride)
- C. AUX1
- D. AUX4 or Turn Signal
- E. Travel Speed

Right Control lever



- F. AUX3
- G. AUX2
- H. Proportional AUX Switch
- I. AUX Hold Switch



Specifications

Model				SSV65		SSV75		
Type of operator station				Open CAB / Closed CAB		Open CAB / Closed CAB		
Engine	Model			V2607-CR-TE4		V3307-CR-TE4		
	Emission certification			Tier 4		Tier 4		
	Gross HP		HP (kW)/rpm	64 (47.7)/2700		74.3 (55.4)/2600		
	Displacement		cu.in. (cc)	159.7 (2615)		203.3 (3331)		
	Cylinders			4		4		
	Bore Stroke		in.(mm)	3.5 (87) × 4.4 (110)		3.8 (94) × 4.8 (120)		
	Aspiration			Turbocharged		Turbocharged		
Loader Performance	Rated operating capacity-35% tipping load			lbs. (kg)	1365 (619)		1883 (854)	
	Rated operating capacity-50% tipping load			lbs. (kg)	1950 (885)		2690 (1220)	
	Tipping load			lbs. (kg)	3900 (1770)		5380 (2440)	
	Breakout force		Bucket	lbf. (kgf)	4839 (2195)		5884 (2669)	
			Lift arm	lbf. (kgf)	3858 (1750)		4850 (2200)	
	Lifting capacity			lbs. (kg)	4409 (2000)		5452 (2473)	
	Lift arm path			Vertical		Vertical		
Undercarriage	Standard tire size			10-16.5-8PR		12-16.5-10PR		
	Chain size ASA#			80		100		
	Travel speed		Low	mph (km/h)	6.9 (11.1)		7.1 (11.4)	
			High	mph (km/h)	11.0 (17.7)		11.4 (18.3)	
	Traction force			lbf. (kgf)	7339 (3329)		8494 (3853)	
	Ground clearance			in. (mm)	7.9 (201)		8.5 (217)	
Hydraulic system	Loader hydraulic flow			gpm (ℓ/min.)	18.0 (68.0)		20.9 (79.0)	
	Loader hydraulic pressure			psi (kgf/cm²)	3271 (230)		3271 (230)	
	Aux. hydraulic flow		Standard	gpm (ℓ/min.)	18.0 (68.0)		20.9 (79.0)	
			High	gpm (ℓ/min.)	28.0 (106.0)		30.4 (115.0)	
	Service refill capacities	Hydraulic tank			gal. (ℓ)	4.2 (16.0)		4.2 (16.0)
Fuel tank			gal. (ℓ)	25.4 (96.0)		26.9 (102.0)		
Operating weight (Include operator weight 175lbs.)				lbs. (kg)	6790 (3080) / 7055 (3200)		8157 (3700) / 8422 (3820)	

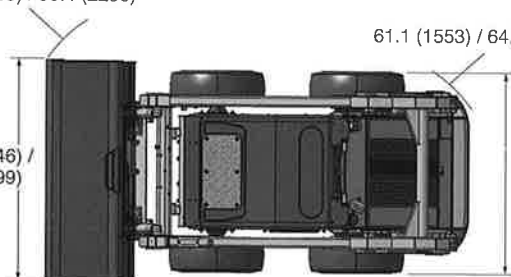
The company reserves the right to change the above specifications without notice. This brochure is for descriptive purposes only. Please contact your local Kubota dealer for warranty information. For your safety, Kubota strongly recommends the use of a Rollover Protective structure (ROPS) and seat belt in almost all applications.

Dimensions

SSV65 / SSV75

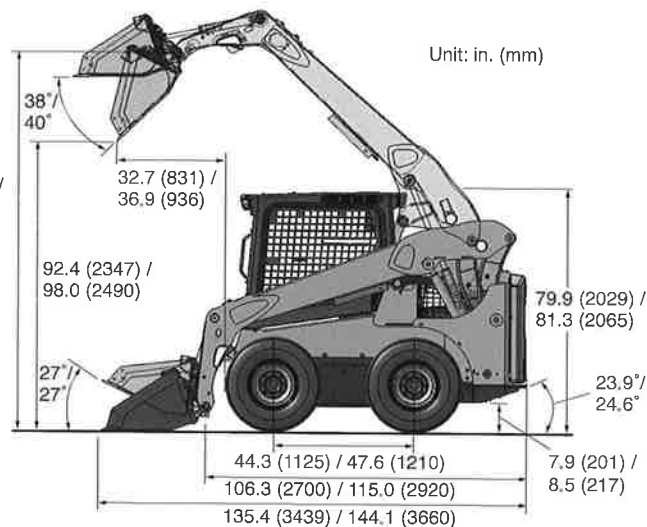
84.2 (2139) / 90.4 (2296)

68.8 (1746) /
74.8 (1899)



61.1 (1553) / 64.5 (1638) 121.5 (3085) /
128.3 (3258)

66.5 (1689) /
71.8 (1823)



©2014 Kubota Corporation

Kubota®

KUBOTA TRACTOR CORPORATION

Kubota Tractor Corporation, 3401 Del Amo Boulevard, Torrance CA 90503
 Western Division: 1175 S. Guild Ave., Lodi, CA 95240 Tel (209) 334-9910
 Central Division: 14855 FAA Boulevard, Fort Worth, TX 76155 Tel (817) 571-0900
 Northern Division: 6300 at One Kubota Way, Groveport, OH 43125 Tel (614) 835-1100
 Southeast Division: 1025 Northbrook Parkway, Suwanee, GA 30024 Tel (770) 995-8855

Visit our web site at: www.kubota.com

