

Reliability in Action

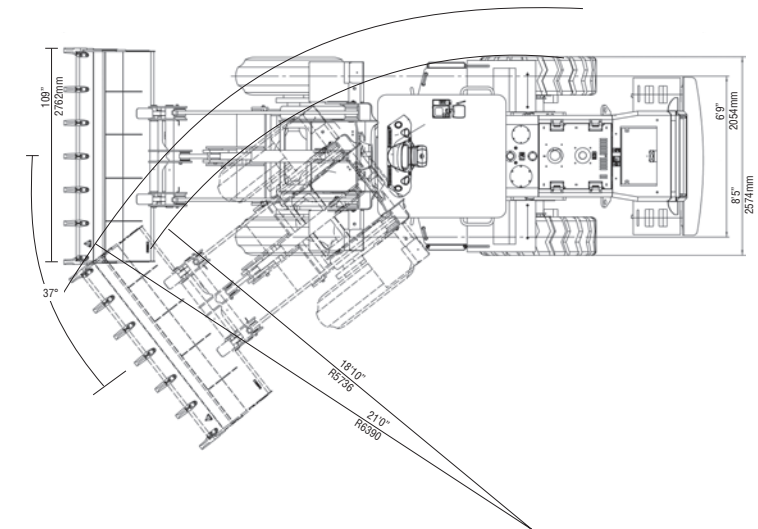
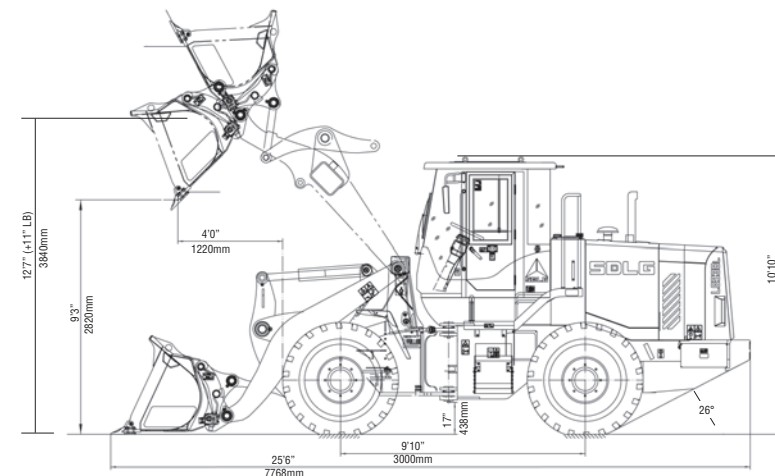
LG948L



SDLG2219339



# LG948L Wheel Loader



## LG948L Standard Features

- Deutz 6.1 liter, tier 4i-certified engine with reversible cooling fan
- ZF 4WG158 powershift transmission
- SDLG dry disc brakes on all 4 wheels
- Air conditioned operator cab with AM/FM radio and USB interface
- Cab is ROPS / FOPS - ISO EN 3449, ISO EN 3471, ISO EN 3164
- Joystick control with separate third function
- Hydraulic quick coupler - ISO Interface - in cab actuation switch
- Full powered third function hydraulics
- General purpose bucket - 3.0 yd<sup>3</sup> (2.3 m<sup>3</sup>) with bolt-on edge
- 12 Month/1500 hour warranty (conditions apply)

## Optional Equipment

- Long boom (+11" (280 mm) in dump height, no reach increase)
- Boom suspension system
- 20.5R25 L3 tubeless tires (radial)
- Light material bucket - 4.5 yd<sup>3</sup> (3.4 m<sup>3</sup>) with bolt on edge
- Quick attach fork lift frame with 49" (1245 mm) fork tines

Specifications Brief			
Bucket Capacity, Standard & Long Boom	3.0 yd <sup>3</sup>	2.3 m <sup>3</sup>	
Bucket Width	109 in	2,762 mm	
Max Breakout Force	Standard Boom	27,100 lbf	123 kN
	Long Boom	24,730 lbf	110 kN
Full turn Tipping Load	Standard Boom	20,100 lbf	9,117 kN
	Long Boom	18,100 lbs	8,206 kg
Rated Load (w/ Bracket)	7,980 lbs	3,620 kg	
Rated Load (w/o Bracket)	8,820 lbs	4,000 kg	
Operating Weight	30,200 lbs	13,700 kg	

Specifications are subject to change without prior notice from SDLG North America in line with the continuous improvement program from SDLG

Engine			
Model	Deutz TCD6.1L6 Tier 4i		
Type	4-Stroke, Turbocharged, Water-Cooled, High-Pressure Common Rail Fuel Injection System		
Emission Control System	Cooled Exhaust Gas Recirculation, Particle Filter with Active Regeneration		
Max Gross Power, 2300 rpm	173 hp	129 kW	
Max Net Power, 2300 rpm	166 hp	124 kW	
Max Torque, 1450 rpm	553 lbf-ft	750 Nm	
Cylinders	6.0		
Displacement	372 in <sup>3</sup>	6.1 L	
Bore	4 in	101 mm	
Stroke	5 in	126 mm	

Drivetrain			
Type	Countershaft		
Travel Speed	Gear	Forward	Reverse
	1st	4.0 mph, 6.5 kph	
	2nd	6.8 mph, 11.0 kph	
	3rd	13.0 mph, 21.0 kph	
	4th	18.6 mph, 30.0 kph	-----
Torque Converter	Type	3 Elements, Single Phase, Single Turbine, Hydraulic Converter	
	Torque Multiplication	2.9 : 1	
	Oil Cooling Type	Circulation, Liquid Cooled	
	Oil Inlet Pressure	123.3 PSI	0.85 MPa
	Oil Outlet Pressure	72.5 PSI	0.5 MPa
Gear Box	Type	Fixed Axle, Electrohydraulic Shift	
	Control	Powershift, Mechanical Control, Twist Grip with Kickdown	
	Gears	4 Forward, 3 Reverse	
	Working Pressure	232 - 261 PSI	1.6 - 1.8 PSI
	Transmission Ratio	Type	Forward, 1st
Forward, 2nd			2.368
Forward, 3rd			1.126
Forward, 4th			0.626
Reverse, 1st			3.996
Reverse, 2nd			2.368
Axles	Main Drive	Type	Single-Stage, Spiral Bevel
	Hub Reductions	Reduction Gear Ratio	5.286
Tires		Type	Single-Stage, Planetary
	Reduction Gear Ratio		4.4
Brakes	Type	20.5-25 16-Ply Tubeless	
	Tire Pressure	Front	48-51 PSI, 0.3-0.35 MPa
		Rear	40-43 PSI, 0.27-0.29 MPa
Service Brake	Type	Hydraulic, Dry-Disc,SDLG	
	Parking Brake	Mechanically Operated, Hydraulic Release	
	Brake Oil Pressure	2000 PSI	13.8 MPa

Steering System			
Type	Load Sensing, Fully Hydraulic Articulated Steering		
Priority Valve	VLH-240S-16		
Steering Pump	HTP3-115/P124-16 Gear Pump		
Steering Cylinders	Model Type	HSGL-80x45x327-594	
	Rod Diameter	1.8 in	45.0 mm
	Bore	3.1 in	80.0 mm
	Stroke	12.9 in	327.0 mm
Steering Angle	37°		
Steering Pressure	2320 PSI	16.0 MPa	

Hydraulic System			
Type	Hydraulic Pilot Control		
Control, In-Cab	Joystick Control with Separate Third Function		
Main System Pump	HPT3-115/P124-16 Gear Pump		
Main Control Valve	D32A-17 (3 spool)		
Pilot Valve	HC-RCL-5A-VIA		
System Pressure, Working	2465 PSI	17.0 MPa	
System Flow, Working	63.4 gpm	240.0 lpm	
Lifting Cylinder (X2)	Model Type	HSGF-140x80x779-1234	
	Rod Diameter	3.1 in	80.0 mm
	Bore	5.5 in	140.0 mm
	Stroke	30.6 in	779.0 mm
Tilt Cylinder (X1)	Model Type	HSGF-180x90x502-954	
	Rod Diameter	3.5 in	90.0 mm
	Bore	7.1 in	180.0 mm
	Stroke	19.7 in	502.0 mm
Lift Time, Loaded	≤ 6.03 s		
Dump Time, Empty	≤ 1.25 s		
Lower Time, Empty	≤ 2.39 s		
Total Time	≤ 9.68 s		

Electrical System	
Voltage	24.0 V
Batteries	2 X 12 V
Battery Capacity	120.0 Ah
Cold Cranking Amps	850.0 CCA
Alternator Rating	2800 W, 100 A
Starter Motor Output	5.4 hp, 4.0 kW

Service		
Fuel Tank	53.0 gal	200.0 l
Hydraulic Oil Tank	35.7 gal	135.0 l
Engine Oil	4.0 gal	15.0 l
Engine Coolant	9.5 gal	36.0 l
Main Drive, Axle	4.2 gal	16.0 l
Hub Reduction, Axle	2.6 gal	10.0 l
Transmission Gearbox	9.2 gal	35.0 l