



FTX128L

128 HP High Performance Compact Track Loader



FTX128

Performance & Service Access

PERFORMANCE



45° Gradeability with Power to Cut and Climb



128HP AND 60GPM COUPLED WITH FECON POWER MANAGEMENT DELIVERS HIGH PERFORMANCE IN MULCHING, STUMP GRINDING AND MORE!



Compact Size allows Easy Transport



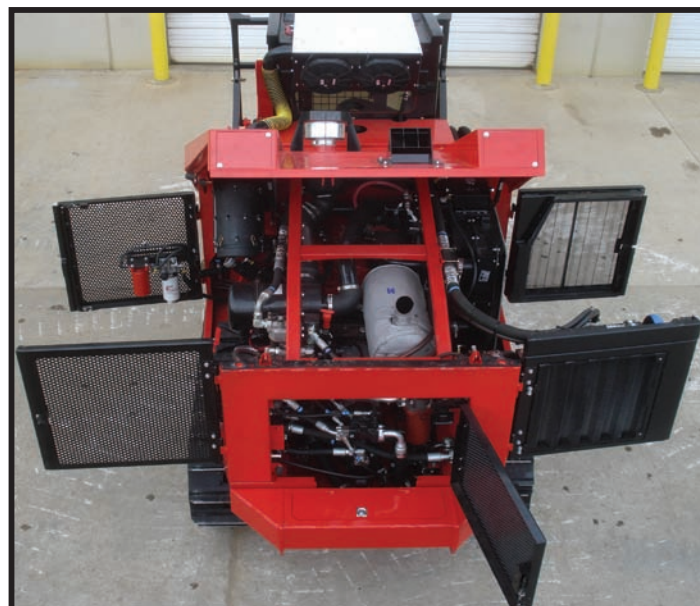
Fuel Efficiency with Power to Perform



Strong Track Power for Difficult Terrain
20" Shoes for 3.8psi

SERVICE ACCESS

- LESS TIME SERVICING
- SWING OUT COOLER
- SAFE ACCESS FROM GROUND



- EFFICIENT DESIGN
- SIMPLE CLEANING
- LARGE DOORS

FTX128

Operators Cab & Versatility

CAB, COMFORT & VISIBILITY

Operator Comfort, Clear Visibility and the Confidence of Feeling Safe allows your operator to get top production with the FTX128L every day.

- Swing Out Screen
- Corner Door for Easier Cab Entry
- Suspension Seat
- 4 Points of Egress
- 2 Way Latches on Roof Hatch
- Panoramic Operator View
- View of Back of Head
- Unobstructed Rear Visibility
- Optional Rear View Camera



VERSATILITY

The FTX128L is engineered to handle a variety of productive forestry and land clearing attachments. In-cab adjustable flow makes it possible to switch between approved attachments. The universal quick attach coupler is compatible with most skid steer attachments giving greater versatility for profitability

The FTX128L utilizes IQAN system controls and monitoring. IQAN allows in cab troubleshooting and ability to select hydraulic flows for various attachments and applications.



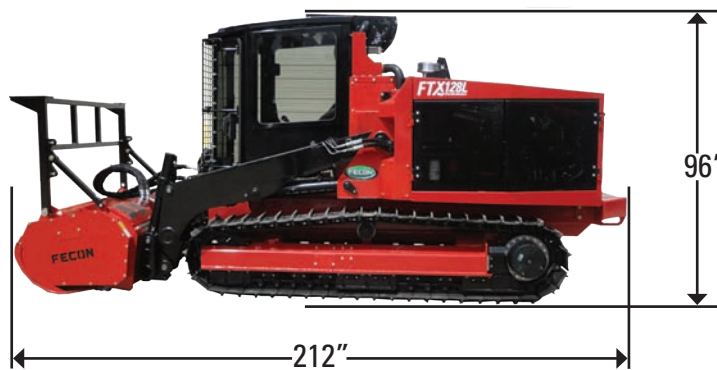


fecon.com
sales@fecon.com
800 528 3113
+1 513 696 4430

GENERAL	FTX128L
Weight of tractor only	14,300 lbs / 6486 kg
Weight of tractor with BH74SD Bullhog®	16,800 lbs / 7620 kgs
Weight of tractor with BH85SD Bullhog®	17,350 lbs / 7870 kgs
Length of tractor with BH85SD/BH74SS Bullhog®	206" / 5232 mm
Height Overall	96" / 2439 mm
Width At Tracks	68" / 1727 mm
Width Overall with BH74SD Bullhog®	75" / 1950 mm
Width Overall with BH85SD Bullhog®	85" / 2159 mm
Travel Speed	1 - 4 mph
ENGINE	
Make	Cummins
Model	QSB4.5
Number of Cylinders	4
Horsepower	128 / 95.4 kw
Rated Torque @ RPM	403 ft. lbs. @ 1400 rpm
Cooling	Water Cooled
Fuel Tank	45 gal / 170 ltr
Fuel Consumption	3.5 - 4.5 gph / 13 - 17 lph
Air Cleaner	Dual with Pre -Cleaner
HYDRAULIC SYSTEM *Fecon Power Management®	
System Pressure	4500 PSI
High Flow	4500 psi / 60 gpm
Low Flow	3000 psi / 17 gpm
Hydraulic Reservoir	55 gal. / 208 ltr
UNDERCARRIAGE	
Type	Steel
Shoe Type	Single or Triple Grouser
Track Width	20" / 500 mm
Track Gauge	52.25" / 1327 mm
Ground Pressure	20" - 3.8 psi
Ground Clearance	16" / 410 mm

- Skid Steer Attachment Versatility
- In Cab Hydraulic Flow Adjustment
- Unmatched Front, Rear and Side Visibility
- Exceptional Service Access
- Corner Entry Cab with 4-Point Egress
- Strong Track Power with Low Ground Pressure

UNPARALLED RANGE OF MOTION



- Operator's cab must be protected with both properly maintained 1/2" LEXAN® Glass (or equal) and Falling Object Protection.
- Specifications subject to change without notice. • Photographs may have been altered for marketing purposes.
- Certain guarding and features may have been removed for illustrative purposes, always run with proper guarding.
- Weights may vary based on options. • Safety Is The Responsibility Of The Operator.
- Always ensure that your carrier manufacturers safety features (including Falling Object Protection, and Roll-Over Protection) meet your job safety requirements.



GS-30F-0019S