

SKID STEER LOADERS

328E/332E



JOHN DEERE



Your words carry a lot of weight, too.

When our customers express their opinions, we listen. And you'll discover plenty of bright ideas in our E-Series Skid Steers that are the result of your input. Such as courtesy lighting for illuminated cab entrance/exit in dark environments. Increased performance in the 328E, and significantly more power in the top-of-the-line 332E. You have more control choices, too, including exclusive switchable electrohydraulic (EH) H-ISO-foot controls. And quieter, more spacious operator stations. Other customer-inspired enhancements include a redesigned rear hood and easier-to-remove/replace heavier-duty engine side shields that simplify servicing. You won't find a more owner- and operator-friendly skid steer on the market. You have our word on it.

Specifications	328E	332E
Power	64 kW (86 gross hp) / 62 kW (83 net hp)	74.6 kW (100 gross hp) / 72 kW (97 net hp)
Rated Operating Capacity	1271 kg (2,800 lb.)	1453 kg (3,200 lb.)
Breakout Force		
Boom	2270 kg (5,000 lb.)	2996 kg (6,600 lb.)
Bucket	4676 kg (10,300 lb.)	6299 kg (13,875 lb.)
Tipping Load	2542 kg (5,600 lb.)	2906 kg (6,400 lb.)



DEERE

332E



JOHN DEERE



1. Although not exactly a sunroof, the bolt-on top window on cab-equipped models removes quickly for increased ventilation and/or easy cleaning.

2. Standard courtesy lighting stays on up to 90 seconds after the engine is shut down, illuminating the way for easier exits out of dark barns or off after-hour jobsites.



Open the door to a more productive day.

When was the first time that “compact” and “comfortable” were accurately used together to describe a skid steer? But with the many refinements found in our E-Series, we can make the claim with a straight face. Wide-open entryways and flat floors allow easier in and out, and provide more foot- and legroom. Operators will also like what they see from the sculpted suspension seat. All-around visibility is expansive and second-to-none. The highly efficient HVAC system employs eight automotive-style vents to keep the glass clear and cab comfortable. Plus plenty of other cab amenities including an optional AM/FM weather-band radio with dual speakers help tune-in more productivity.

HVAC system employs eight automotive-style louvers to direct warm or cold airflow where it's appreciated most — on the operator. For production-boosting year-round comfort.

Expansive curved front glass, large top window, and low side windows make it easy to see the surrounding jobsite. Even with an expanded engine compartment, best-in-class sightlines provide a clear view of the action behind you, as well.

Flat floor provides 33-percent-more comfort-lending foot room. Makes getting in and out of the cab easier, too.

Fully adjustable pull-down padded lap bar provides comfortable arm support.

Triple-interlock operator-presence system automatically applies the brakes when the lap bar is raised, the operator leaves the seat, or the engine is shut down.

Cabs and floors are tightly sealed and pressurized to keep out dust and noise.

We've got your back with a sculpted air-ride or mechanical-suspension seat to help smooth the ride. Choose either a cloth or vinyl air-suspension seat in cab-equipped models.

Storage box, cup holder, and iPod™/cell-phone holder (with nearby 12-volt power port) provide plenty of room to stow your stuff.



1

2



Set your sites on getting more done.

Want a skid steer that's more productive? Get one of ours. Optimal weight distribution, low center of gravity, high ground clearance, and long wheelbase deliver superior stability. But getting there is only half the battle. These skid steers also excel at putting material in its place. Their patented vertical-lift boom rises to the occasion, delivering exceptional lift height and reach. So you can do more, with less effort.

Larger field-proven ultra-reliable diesels deliver more displacement and significantly more torque rise and usable power, while meeting EPA Interim Tier 4 (IT4)/EU Stage IIIB regulations.

These are our most powerful skid steers ever, delivering four-percent-more net power in the 328E, 10-percent more in the 332E.

E-Series' unequalled ability comes from a design that optimizes hydraulics, lift capabilities, and pushing forces.

Fully electronic injection systems aid cold-weather starting and enable E-Series engines to run at lower rpm without sacrificing power. For longer life and better fuel efficiency.

Fast ground speeds and large bucket capacities enable these nimble material movers to make the most of every cycle. Need even more speed? Opt for a two-speed transmission.

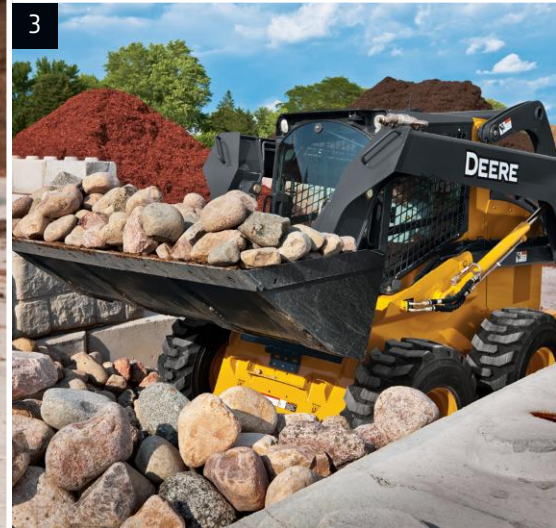


1. Superior axle torque and impressive bucket breakout deliver the leverage and traction to dig in where others just spin. For best-in-class pushing, prying, and digging power.

2. Optional ride control's shock-absorbing boom cylinders cushion bumps, helping retain full bucket loads all the way to your destination. Help speed navigation over rough terrain, too.

3. Nothing lifts like a Deere. Impressive tipping load and rated operating capacities empower our E-Series Skid Steers to master an ever-changing variety of material-handling tasks.

4. Some jobs can be a real stretch. Our patented boom design clears high sideboards and even dumps to the center of tandem-axle trucks.



Become a “controls freak.”

We'll excuse you for becoming a bit of a “controls freak” after running one of our skid steers. Offering one-of-a-kind options, only the E-Series lets an operator decide how the work gets done. ISO, H-pattern, or foot/joystick electrohydraulic (EH) controls are all available. Or, choose our exclusive switchable EH option that lets you select any of the above, anytime, at the push of a button. That's just for starters. Add the EH Joystick Performance Package, and you can customize joystick travel/steering sensitivity. Slow travel speeds to a crawl while maintaining full hydraulic capability. Or match boom/bucket speed settings to the application. The ultimate people pleasers, our E-Series truly is all things to all operators.



1. Overhead panel conveniently places machine info on the left, control switches to the right. Easy-to-read LCD monitor accesses a wealth of machine info and control — including vital operating conditions and advanced diagnostics.
2. Joystick buttons, rotary switch, and triggers actuate and control the auxiliary hydraulics/flow rates, boom float, and two-speed transmission.
3. Optional keyless-start sealed-switch panel includes an anti-theft system with one owner and five individual codes. And simple fingertip control of numerous options.





EH joysticks are standard. They're our smoothest and most responsive yet, providing enhanced control and operating ease.

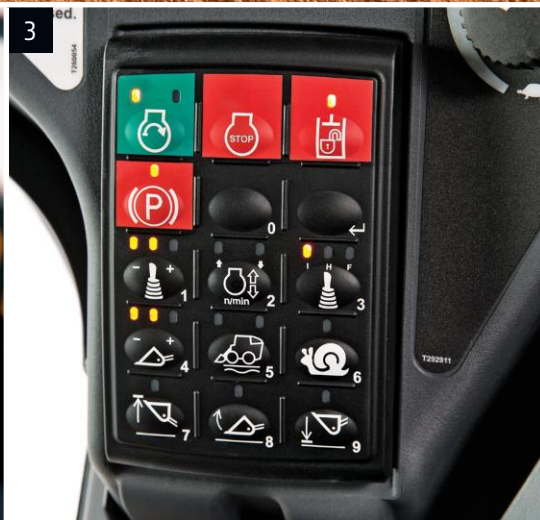
Now you can have your joysticks and foot pedals, too. Exclusive switchable EH controls allow the operator to choose ISO, H-pattern, or EH joystick and foot controls. Simply press a button on the keyless-start sealed-switch module and go to work.

Mechanical-linkage foot controls are no match for the best-in-class metering provided by our EH foot pedals.

Want to make the most of our vertical-lift boom design? Add the self-level option and simplify your material-handling tasks.

EH Joystick Performance Package lets an operator customize operation and response to personal preferences through the sealed-switch monitor:

- **Attachment control** operates hydraulic-powered additions such as augers or breakers.
- **Creep control** allows slow incremental travel speeds while maintaining full hydraulic flow. It's ideal for work with cold planers or trenchers.
- **Boom and bucket speed settings** enable precision (slow), utility (normal), and productivity (fast) response.
- **Switchable controls** let you choose ISO, H-pattern, and EH foot/joystick controls.
- **Propel aggressiveness modes** set travel/steering response rates. **Precision** is ideal for work in tight spaces. **Utility** is for normal operation. **Production** delivers faster response for stockpiling and truck loading.



Work our connections, as you expand yours.

If you're looking to broaden your business, your John Deere dealership is the place to start. Their equipment offering includes more than 100 Worksite Pro™ attachments that will help expand your efforts. E-Series Skid Steers are designed with these additions in mind. The universal Quik-Tatch™ makes attachment switchover quick and easy. Standard-flow auxiliary hydraulics with connect-under-pressure couplers is also standard. And if your equipment yard includes our compact track loaders, compact excavators, or 244J Loader, many of these attachments are interchangeable between machines. Talk to your dealer to learn more.

Our skid steers are also your foul-weather friends. Equipped with snow blower, snow pusher, blade, or angle broom, they make quick work of cleaning up whatever winter drops your way.

Clear heavy brush and saplings with our rotary cutters. Or put a mulching head to work shredding trees and stumps.

For cleaning out pens or re-bedding stalls, handling feed, or whatever — we've got the manure scrapers, forks, utility grapples, bale spears, and specialty buckets to get it done.



1. Cleanup is quicker with tools such as our grapples. Two hydraulic-actuated dual-action tongs provide superior material retention.

2. Multi-purpose and rock buckets are welcome additions for site prep, cleaning up debris, and sifting/sorting materials.

3. Perfect for concrete or asphalt flatwork — our angle brooms, breakers, cold planers, and wide variety of buckets let you hit the road running.





Worksite Pro attachments:

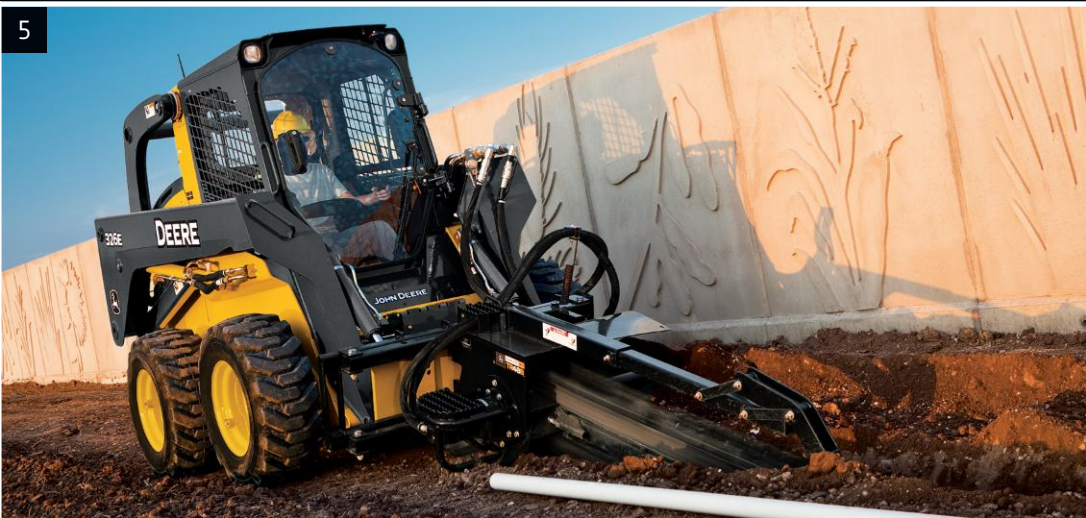
- Ag forks
- Augers
- Backhoes
- Bale spears (round, square)
- Blades (snow, utility)
- Breakers/hammers
- Brooms (angle, pickup)
- Cold planers
- Dozer blades
- Grapples (ag utility, brush-tined, scrap)
- Landplanes
- Mulching heads
- Multipurpose buckets
- Pallet forks
- Power rakes
- Rock buckets
- Roller levels
- Rotary cutters
- Rotary tillers
- Scrapers (material, manure)
- Side-discharge buckets
- Snow blowers
- Snow pushers
- Trenchers
- Vibratory rollers

4. Our offering of landscape and nursery tools continues to grow and includes rotary tillers, augers, pallet forks, power rakes, landplanes, dozer blades, and roller levels, to list just a few.

5. High- or standard-flow trenchers and removable backhoes work well for irrigation and underground utility tasks.



4



5



Nothing runs like a Deere, because nothing is built like one.

Downtime and deadlines don't mix — which is why we build our skid steers the way we do. Large-displacement electronic-injection Interim Tier 4/Stage IIIB diesels headline the list of uptime-boosting enhancements. Other job-proven durability difference-makers include our exclusive V-plenum cooling system with hydraulically driven variable-speed fans. Heavy-duty axles. Beefy booms and upper links. And integrated rear bumpers. When you know how they're built, you'll run a Deere.



Large cross-section boom arms and heavy-duty upper links deliver the strength to endure tough tasks for long-term durability.

The E-Series employs the same job-proven platform of EPA IT4/EU Stage IIIB emission-meeting technologies as our larger equipment. Simple, fully integrated, and fully supported, our emission solution delivers industry-leading fuel efficiency and uptime.

Diesel particulate filter (DPF) cleaning doesn't impact or interrupt machine performance under normal operating conditions.

Switches and electrical connectors are sealed from moisture and dirt to help prevent corrosion.

Spring-applied, hydraulic-released wet-disc park brakes are fully enclosed and never require adjustment.

O-ring face-seal hydraulic fittings virtually eliminate aggravating and costly oil leaks.

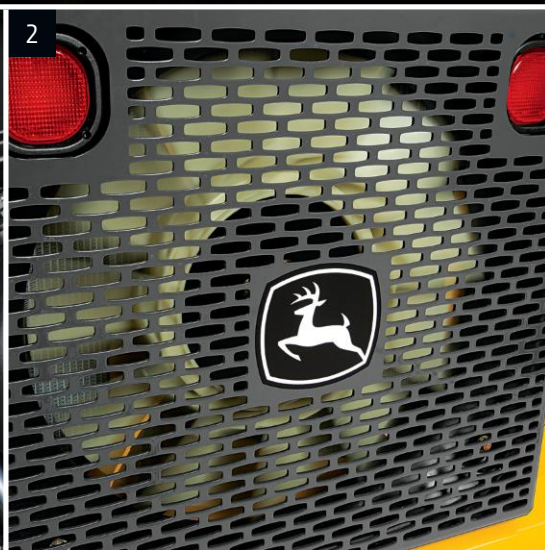
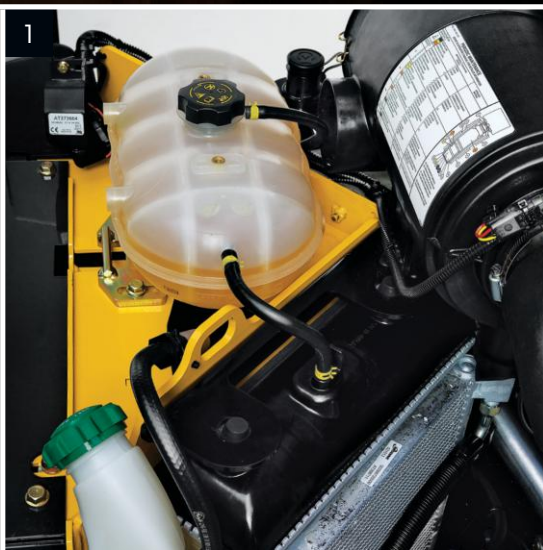
Auto-idle helps preserve engine life and conserve fuel, reducing engine speed after the operator has vacated the seat. Full auto-idle (available with EH controls) slows the engine after five seconds of inactivity and resumes preset engine speed with any joystick movement.

Auto-shutdown system monitors engine and hydraulic vitals, and issues an audible warning when limits are exceeded. If necessary, it shuts down the machine to help prevent damage.

1. Industry-exclusive design separates coolers in an innovative V-shape configuration that's 10-percent-more efficient. Large aluminum hydraulic cooler and radiator provide the necessary capacity for high-ambient-temperature operation.

2. Hydraulic-driven variable-speed fan runs only as fast or frequently as needed — for improved power and fuel efficiency, and decreased noise and debris flow through the coolers. Exclusive reversible option can be set to automatically reverse as often as the application dictates to clear core-clogging buildup.

3. Rear bumper with integral tie-downs protects cooling components from run-ins with obstacles. Add the optional heavy-duty rear grille for even more durability.



Maintenance made “E”asy.

Servicing an E-Series Skid Steer is quick and easy. So easy, in fact, that you won't even have to raise its boom for daily service or most periodic maintenance. Checkpoints are conveniently grouped and easily reached beneath the hinged hood. And removable side panels give way to the coolers, maintenance-free battery, and fluid and air filters. If necessary, the operator station tilts in minutes for best-in-class drivetrain access. And industry-leading parts and service are just as accessible at more than 1,300 John Deere dealer locations from coast to coast.



INTERVAL	ITEM	DESCRIPTION	ACTION
100	1	ENGINE OIL LEVEL	CHECK
100	2	HYDRAULIC OIL LEVEL	CHECK
100	3	HYDRAULIC PLANITARY GEAR OIL - IF EQUIPPED	CHANGE
100	4	ROOM AIR FILTER	REPLACE
100	5	CYLINDER PUMP POINTS	LUBRICATE
100	6	SPIN BALL BEARING	LUBRICATE
100	7	SAFETY UNCLIPPER VALVE	CHECK AND CLEAN
100	8	TRACTOR TENSION - IF EQUIPPED	CHECK
100	9	ENGINE OIL	CHANGE
100	10	ENGINE AIR FILTER	REPLACE
100	11	FUEL PRE-FILTER - WATER SEPARATOR	REPLACE
100	12	FUEL FILTER	REPLACE
100	13	HYDRAULIC OIL FILTER	REPLACE AS REQUIRED ACCORDING TO INDICATOR OR BY POSITIVE ACTION. CHECK LEVEL. REPLACE.
100	14	CHAIN CASE OIL - IF EQUIPPED	CHANGE
100	15	HYDRAULIC OIL RESERVOIR BREATHER	REPLACE
1000	1	HYDRAULIC OIL	CHANGE
1000	2	HYDRAULIC PLANITARY GEAR OIL - IF EQUIPPED	CHANGE
1000	3	ENGINE OIL - IF EQUIPPED	CHANGE
1000	4	FUEL TANK BREATHER	REPLACE
1000	5	FUEL TANK BREATHER	REPLACE
1000	6	ENGINE COOLANT SYSTEM	CHECK COOLANT ADD
1000	7	ENGINE VALVE LASH	CHECK AND ADJUST
1000	8	ENGINE COOLING SYSTEM	DRAIN, FLUSH AND REFILL. (IF COOLANT IS PRE-DILUTED) (1)

Daily servicing is quick and convenient. Simply lift the gas-shock-supported hood for ground-level access to check fluids and refuel.

Removable rear side panels allow wide-open service access and are easier to remove and replace. Stronger, too.

Through-the-monitor onboard diagnostics help speed troubleshooting.

These skid steers share components such as engines with our CTLs and compact excavators, making it easier to ensure you always have the right filters and fluids on hand.

Fluid-fill and service checkpoints are grouped and color-coded. And a conveniently displayed maintenance chart helps ensure that nothing gets overlooked.

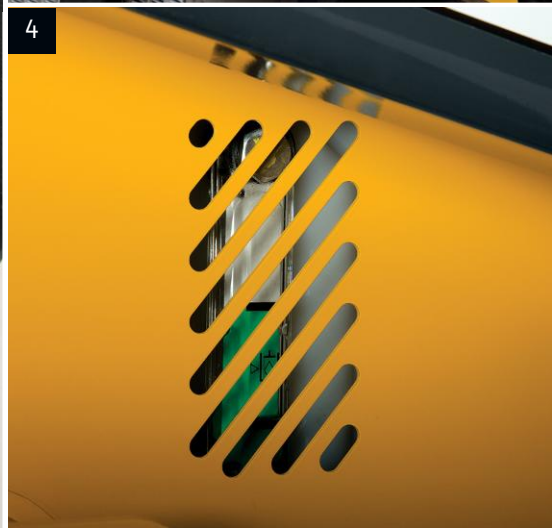
Diesel particulate filter (DPF) service interval is 3,000 hours, and can be done by your John Deere dealer.

V-plenum cooling-system design resists debris buildup and makes radiator and cooler cores easier to clean.

Because no maintenance beats low maintenance, engine serpentine belts never need adjustment.

Compare the cost of parts and labor for recommended maintenance with other makes. The E-Series will save you significant money.

1. Getting to the heart of a Deere is easy. There's no need to raise the boom — just pivot the cab and remove the floor. Takes only minutes.
2. Need extra elbowroom? Raise the boom and remove the side shields for wide-open engine-compartment access. Unique lock lever secures the boom from inside the cab.
3. Spin-on filters and environmental drains allow quick fluid changes.
4. Hydraulic sight gauge and see-through coolant and windshield washer fluid reservoirs let you check levels at a glance.



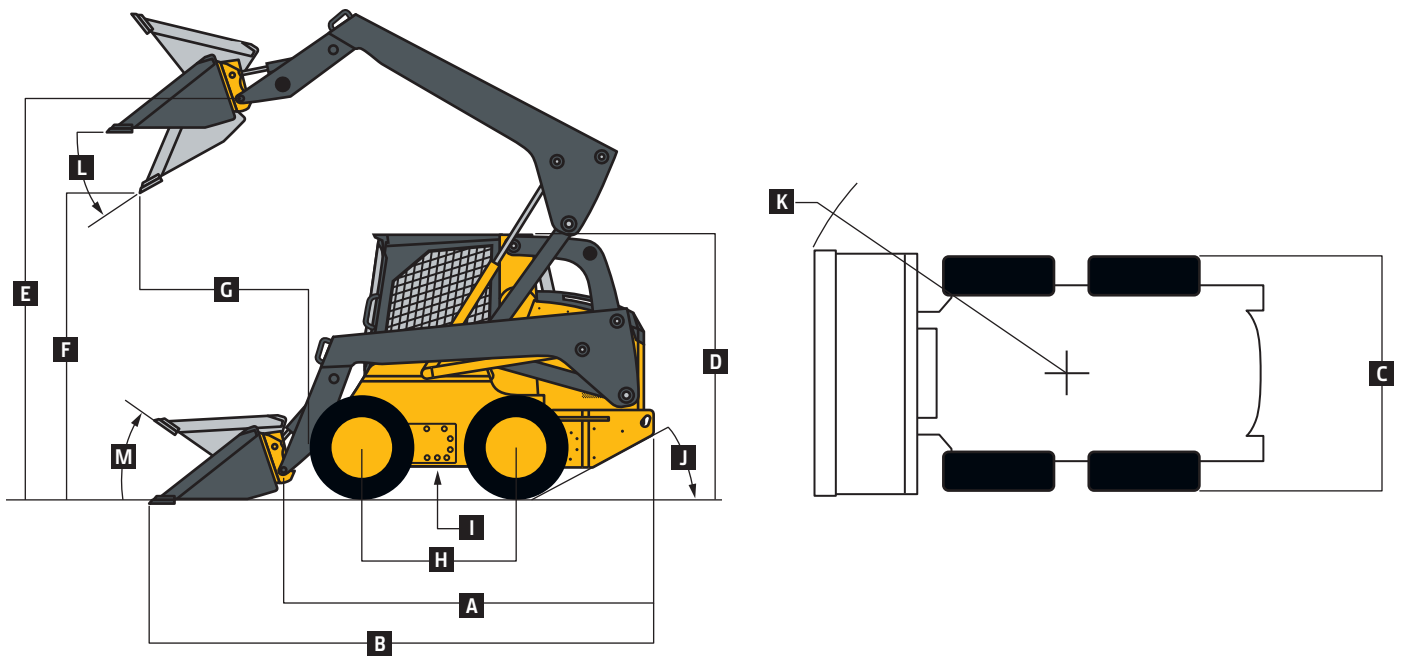
328E



Engine		328E
Manufacturer and Model	Yanmar 4TNV94CHT	
Non-Road Emission Standards	EPA Interim Tier 4/EU Stage IIIB	
Cylinders	4	
Net Peak Power (SAE J1349 / ISO 9249)	62 kW (83 hp) at 2,500 rpm	
Gross Rated Power (ISO 14396)	64 kW (86 hp) at 2,500 rpm	
Gross Peak Power (ISO 14396)	64 kW (86 hp) at 2,500 rpm	
Peak Torque	360 Nm (266 ft.-lb.) at 1,700 rpm	
Displacement	3.1 L (186.3 cu. in.)	
Rated Engine Speed	2,500 rpm	
Torque Rise	47% at 1,700 rpm	
Aspiration	Turbocharged, intercooled	
Air Cleaner	Dry dual element	
Cooling		
Fan Type	Hydraulic variable speed	
Powertrain		
Type	Electrohydraulic controls; 4 – 100 heavy-duty, continuous-loop chain	
Speeds		
Single Speed	11.3 km/h (7.0 mph)	
2 Speed, High	19.3 km/h (12.0 mph)	
System High-Pressure Relief	34 474 kPa (5,000 psi)	
Axles		Induction-hardened, 1-piece forged axle shafts with maintenance-free oil-bath lubrication of inner and outer axle bearings
Maximum Axle Torque	8480 Nm (6,235 lb.-ft.)	
Final Drive		High-strength, adjustment-free chains
Brakes		Spring-applied, hydraulically released, wet-disc park brake
Hydraulics		
Pump Flow		
Standard	80 L/m (21 gpm)	
Total with High-Flow Option	132 L/m (35 gpm)	
System Pressure at Couplers	23 787 kPa (3,450 psi)	
Hydraulic Horsepower Flow (calculated)		
Standard	31 kW (42 hp)	
High	51 kW (68 hp)	
Cylinders		
Type	John Deere heat-treated, chrome-plated, polished cylinder rods, hardened steel (replaceable bushings) pivot pins	
Electrical		
Voltage	12 volt	
Battery Capacity	925 CCA	
Alternator Rating	70 amp	
Lights		Halogen, 2 front and 1 rear
Operator's Station		
ROPS (ISO 3471) / FOPS (ISO 3449) structure with quick-pivot standard		
Tires/Wheels		
Standard Tire Size	14 x 17.5 12 PR Extra Wall	
Serviceability		
Refill Capacities		
Fuel Tank	96.5 L (25.5 gal.)	



Operating Weight		328E
Base Machine		3982 kg (8,770 lb.)
Machine Dimensions		
A	Length without Bucket	3.05 m (120 in.) (10 ft. 0 in.)
B	Length with Foundry Bucket	3.66 m (144 in.) (12 ft. 0 in.)
C	Width without Bucket	1.95 m (76.8 in.) (6 ft. 5 in.)
D	Height to ROPS	2.15 m (84.8 in.) (7 ft. 1 in.)
E	Height to Hinge Pin	3.22 m (126.6 in.) (10 ft. 7 in.)
F	Dump Height with Foundry Bucket	2.57 m (101.1 in.) (8 ft. 5 in.)
G	Dump Reach	
	With Foundry Bucket	0.80 m (31.3 in.)
	With Construction Bucket	0.98 m (38.6 in.) (3 ft. 3 in.)
H	Wheelbase	1.23 m (48.3 in.) (4 ft. 0 in.)
I	Ground Clearance	0.29 m (11.6 in.)
J	Angle of Departure	29 deg.
K	Front Turn Radius with Foundry Bucket	2.17 m (85.3 in.) (7 ft. 1 in.)
L	Dump Angle (full lift height)	45 deg.
M	Bucket Rollback (ground level)	35 deg.



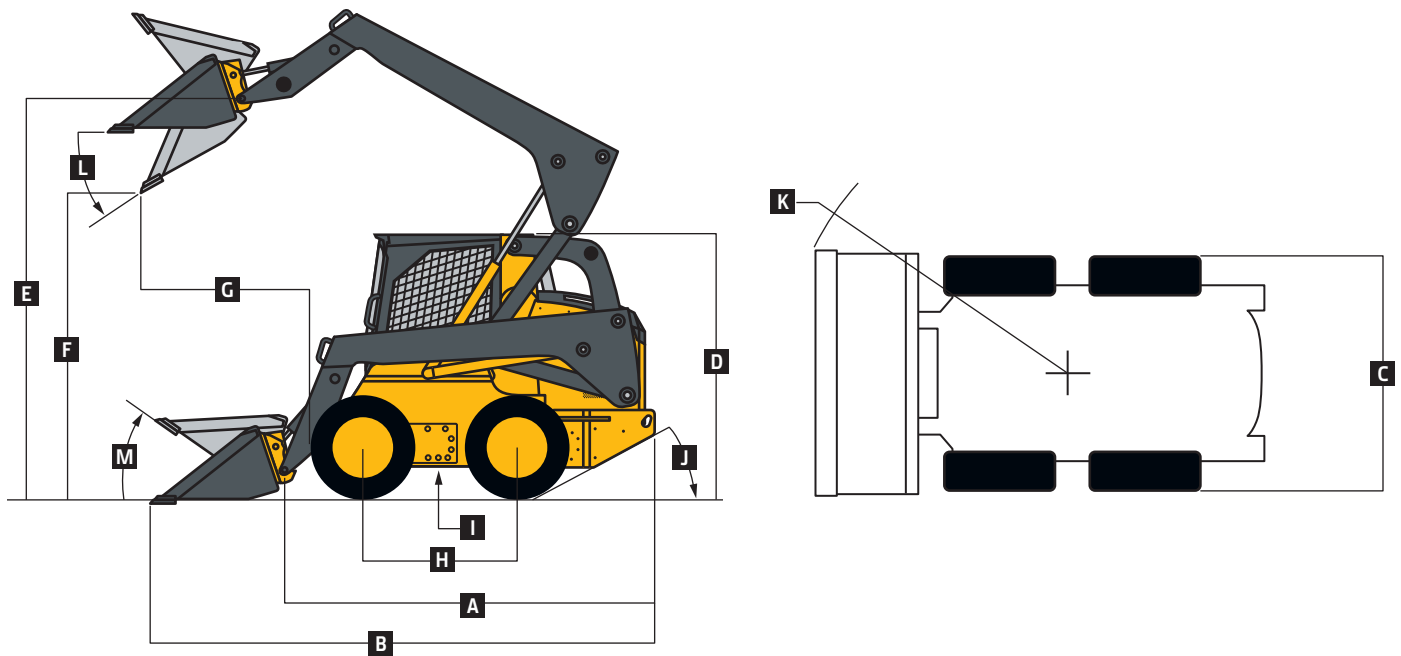
Loader Performance		328E
Tipping Load		2542 kg (5,600 lb.)
SAE Rated Operating Capacity		1271 kg (2,800 lb.)
Boom Breakout		2270 kg (5,000 lb.)
Bucket Breakout Force with Foundry Bucket		4676 kg (10,300 lb.)

332E

Engine		332E
Manufacturer and Model	Yanmar 4TNV94CHT	
Non-Road Emission Standards	EPA Interim Tier 4/EU Stage IIIB	
Cylinders	4	
Net Peak Power (SAE J1349 / ISO 9249)	72.0 kW (97 hp) at 2,500 rpm	
Gross Rated Power (ISO 14396)	74.6 kW (100 hp) at 2,500 rpm	
Gross Peak Power (ISO 14396)	74.6 kW (100 hp) at 2,500 rpm	
Peak Torque	395 Nm (291 ft.-lb.) at 1,700 rpm	
Displacement	3.1 L (186.3 cu. in.)	
Rated Engine Speed	2,500 rpm	
Torque Rise	39% at 1,700 rpm	
Aspiration	Turbocharged, intercooled	
Air Cleaner	Dry dual element	
Cooling		
Fan Type	Hydraulic variable speed	
Powertrain		
Type	Electrohydraulic controls; 4 – 100 heavy-duty, continuous-loop chain	
Speeds		
Single Speed	11.3 km/h (7.0 mph)	
2 Speed, High	19.3 km/h (12.0 mph)	
System High-Pressure Relief	34 474 kPa (5,000 psi)	
Axles		
	Induction-hardened, 1-piece forged axle shafts with maintenance-free oil-bath lubrication of inner and outer axle bearings	
Maximum Axle Torque	9289 Nm (6,830 lb.-ft.)	
Final Drive		High-strength, adjustment-free chains
Brakes		Spring-applied, hydraulically released, wet-disc park brake
Hydraulics		
Pump Flow		
Standard	95 L/m (25 gpm)	
Total with High-Flow Option	144 L/m (38 gpm)	
System Pressure at Couplers	23 787 kPa (3,450 psi)	
Hydraulic Horsepower Flow (calculated)		
Standard	37 kW (50 hp)	
High	55 kW (74 hp)	
Cylinders		
Type	John Deere heat-treated, chrome-plated, polished cylinder rods, hardened steel (replaceable bushings) pivot pins	
Electrical		
Voltage	12 volt	
Battery Capacity	925 CCA	
Alternator Rating	70 amp	
Lights		Halogen, 2 front and 1 rear
Operator's Station		
		ROPS (ISO 3471) / FOPS (ISO 3449) structure with quick-pivot standard
Tires/Wheels		
Standard Tire Size	14 x 17.5 14 PR Hauler	
Serviceability		
Refill Capacities		
Fuel Tank	96.5 L (25.5 gal.)	



Operating Weight		332E
Base Machine		4363 kg (9,610 lb.)
Machine Dimensions		
A	Length without Bucket	3.05 m (120 in.) (10 ft. 0 in.)
B	Length with Foundry Bucket	3.66 m (144 in.) (12 ft. 0 in.)
C	Width without Bucket	1.99 m (78.4 in.) (6 ft. 6 in.)
D	Height to ROPS	2.15 m (84.7 in.) (7 ft. 1 in.)
E	Height to Hinge Pin	3.23 m (127.0 in.) (10 ft. 7 in.)
F	Dump Height with Foundry Bucket	2.59 m (102.0 in.) (8 ft. 6 in.)
G	Dump Reach	
	With Foundry Bucket	0.80 m (31.6 in.)
	With Construction Bucket	0.98 m (38.7 in.) (3 ft. 3 in.)
H	Wheelbase	1.23 m (48.3 in.) (4 ft. 0 in.)
I	Ground Clearance	0.28 m (10.8 in.)
J	Angle of Departure	29 deg.
K	Front Turn Radius with Foundry Bucket	2.17 m (85.3 in.) (7 ft. 1 in.)
L	Dump Angle (full lift height)	45 deg.
M	Bucket Rollback (ground level)	35 deg.



Loader Performance		332E
Tipping Load (with 1 set of standard counterweights)		2906 kg (6,400 lb.)
SAE Rated Operating Capacity		1453 kg (3,200 lb.)
Boom Breakout		2996 kg (6,600 lb.)
Bucket Breakout Force with Foundry Bucket		6299 kg (13,875 lb.)

Additional equipment

Key: ● Standard ▲ Optional or special

See your John Deere dealer for further information.

328E	332E	Engine
●	●	Meets EPA Interim Tier 4/EU Stage IIIB emissions
●	●	Yanmar 4TNV94CHT
●	●	Auto-idle
●	●	Automatic fan-belt tensioner
●	●	Automatic preheat
●	●	Electronic injection system
●	●	John Deere COOL-GARD™ II Extended-Life Engine Coolant
●	●	John Deere Plus-50™ 10w30 initial engine oil fill*
●	●	5-micron primary fuel filter and water separator
▲	▲	Cold-weather starting package
		Cooling System
●	●	Coolant recovery tank
●	●	Variable-speed hydraulically driven fan cooling system
▲	▲	Reversing fan drive
		Powertrain
●	●	High-strength adjustment-free final-drive chains
●	●	Spring-applied hydraulically released wet-disc park brake
●	●	Wet-disc brakes
▲	▲	Transmission, 2-speed
		Hydraulic System
●	●	John Deere hydraulic cylinders with cushioned boom cylinders
●	●	Connect-under-pressure auxiliary couplers
●	●	Quick-check hydraulic fluid-level sight glass
●	●	5-micron hydraulic filter
▲	▲	High-flow hydraulics
		Electrical
●	●	Automatic shutdown with alarm
●	●	Auxiliary hydraulics operator-presence system

328E	332E	Electrical (continued)
●	●	Deluxe instrumentation EMU with: Operator-selectable monitoring – Hour meter, engine rpm, battery voltage, diagnostics, EMU configuration, engine coolant temperature, hydraulic oil temperature / LED warning indicators – Glow plug, seat switch, seat belt, door open, auxiliary hydraulics, park brake engaged, 2-speed engaged, stop, low engine oil pressure, engine coolant over-temperature, battery not charging, air filter restriction, hydraulic filter restriction
●	●	Front and rear halogen work lights
●	●	Triple interlock operator-presence control system
▲	▲	Anti-theft system
▲	▲	Backup alarm
●	●	Battery, 925 CCA
▲	▲	Hazard warning lights
▲	▲	Strobe light, amber
▲	▲	Horn
		Operator's Station
●	●	Deluxe cab headliner
●	●	Electrohydraulic (EH) ISO-pattern joystick controls
▲	▲	EH H-pattern joystick controls
▲	▲	EH foot and joystick controls
▲	▲	EH switchable foot-ISO-H-pattern controls
▲	▲	Keyless-start sealed-switch module
●	●	Electronic push-button auxiliary controls
●	●	Grab handles (4)
●	●	Pull-down lap bar
●	●	Quick-pivot ROPS
●	●	Rear window
●	●	Top window
▲	▲	Removable top window
▲	▲	Sliding/locking glass side windows
●	●	ROPS/FOPS operator structure
●	●	Seat belt, 51-mm (2-in.), retractable
▲	▲	Seat belt, 76-mm (3-in.), retractable
▲	▲	Shoulder belt
●	●	Water-shedding deluxe vinyl seat
▲	▲	Deluxe vinyl suspension seat

328E	332E	Operator's Station (continued)
▲	▲	Air-ride (cloth) seat
▲	▲	Air-ride (vinyl) seat
●	●	12-volt power port / Dome light / Cargo storage / Beverage holder
▲	▲	Air conditioning with heater/defroster
▲	▲	Heater with defroster
▲	▲	AM/FM/weatherband radio with auxiliary input
▲	▲	Cab enclosure
▲	▲	Electrohydraulic joystick controls
▲	▲	EH joystick performance package: Switchable ISO-H pattern / Creeper mode / Boom/bucket speed settings / Adjustable propel settings / Attachment controls
▲	▲	Floor mat
▲	▲	Floor mat with left footrest
▲	▲	Hand controls with foot throttle
▲	▲	Rearview mirror
▲	▲	Severe-duty cab door
▲	▲	Heavy-duty rear grille
		Loader
●	●	Integral cab boom lock
●	●	Patented John Deere Quik-Tatch™ (no grease required)
▲	▲	Power Quik-Tatch
●	●	Patented John Deere vertical-lift boom with superior visibility
▲	▲	Hydraulic self-leveling on/off
▲	▲	Ride control
		Other
●	●	Convenient front and rear tie-downs
●	●	Environmental drains for all fluid reservoirs
●	●	14 x 17.5 12 PR Extra Wall
▲	●	14 x 17.5 14 PR Hauler
▲	▲	Chrome exhaust stack
▲	▲**	Modular rear-weight packages
▲	▲	Single-point lift kit
▲	▲	SMV sign kit
▲	▲	Spare tire and wheel
▲	▲	Tire options: Flotation / Solid / Heavy duty

*500-hour engine oil-change intervals when John Deere Plus-50 oil and John Deere oil filter are used.

**Standard equipped with one [1] set.

Net engine power is with standard equipment including air cleaner, exhaust system, alternator, and cooling fan, at standard conditions per SAE J1349 and DIN 6270B, using No. 2-D fuel at 35 API gravity. Gross power is without cooling fan. Specifications and design subject to change without notice. Wherever applicable, specifications are in accordance with SAE standards. Except where otherwise noted, these specifications are based on units with standard equipment, full fuel tanks, and 79-kg (175-lb.) operator.

