

FELLING TRAILERS

DECK-OVER TRAILERS

INDUSTRIAL DECK-OVER TAG • INDUSTRIAL LOW PROFILE TAG



FT-14-2



FT-40-2 LP



FT-50-3 LP



The **FELLING** Style
Quality ~ Craftsmanship ~ Pride

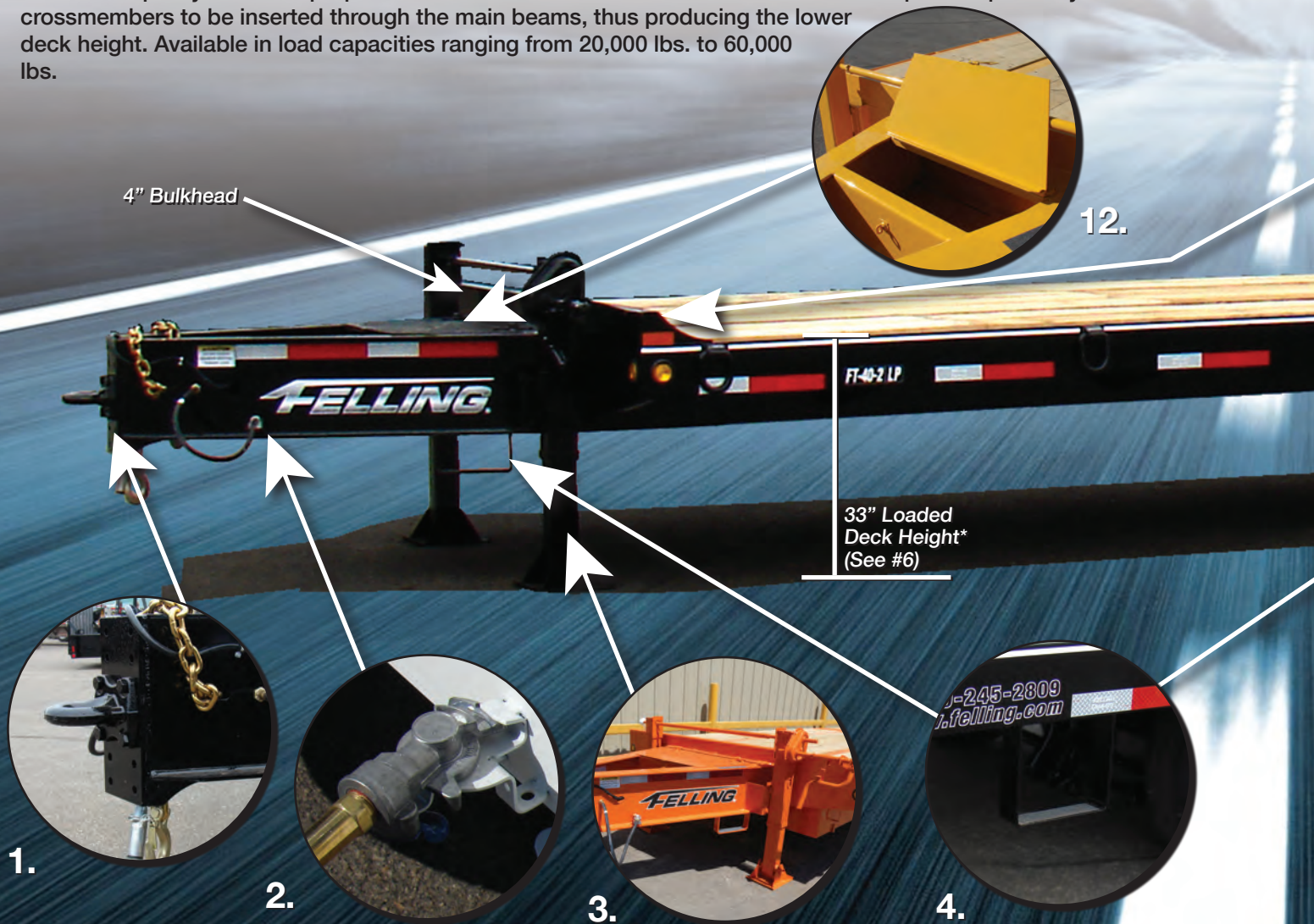


DO-101

Since 1974

LOW PROFILE (LP) DECK-OVER TAGS

Felling's *Low Profile* design delivers a 33" loaded deck height, providing users with load versatility and ease of loading/unloading low clearance equipment. Each trailer is constructed with an engineered, cambered, fabricated main frame beam. The web and flange of each beam are laser cut, in-house, then fused together producing a clean, consistent quality weld and proper camber of each beam. The main frame beams are pierced precisely for the I-Beam crossmembers to be inserted through the main beams, thus producing the lower deck height. Available in load capacities ranging from 20,000 lbs. to 60,000 lbs.

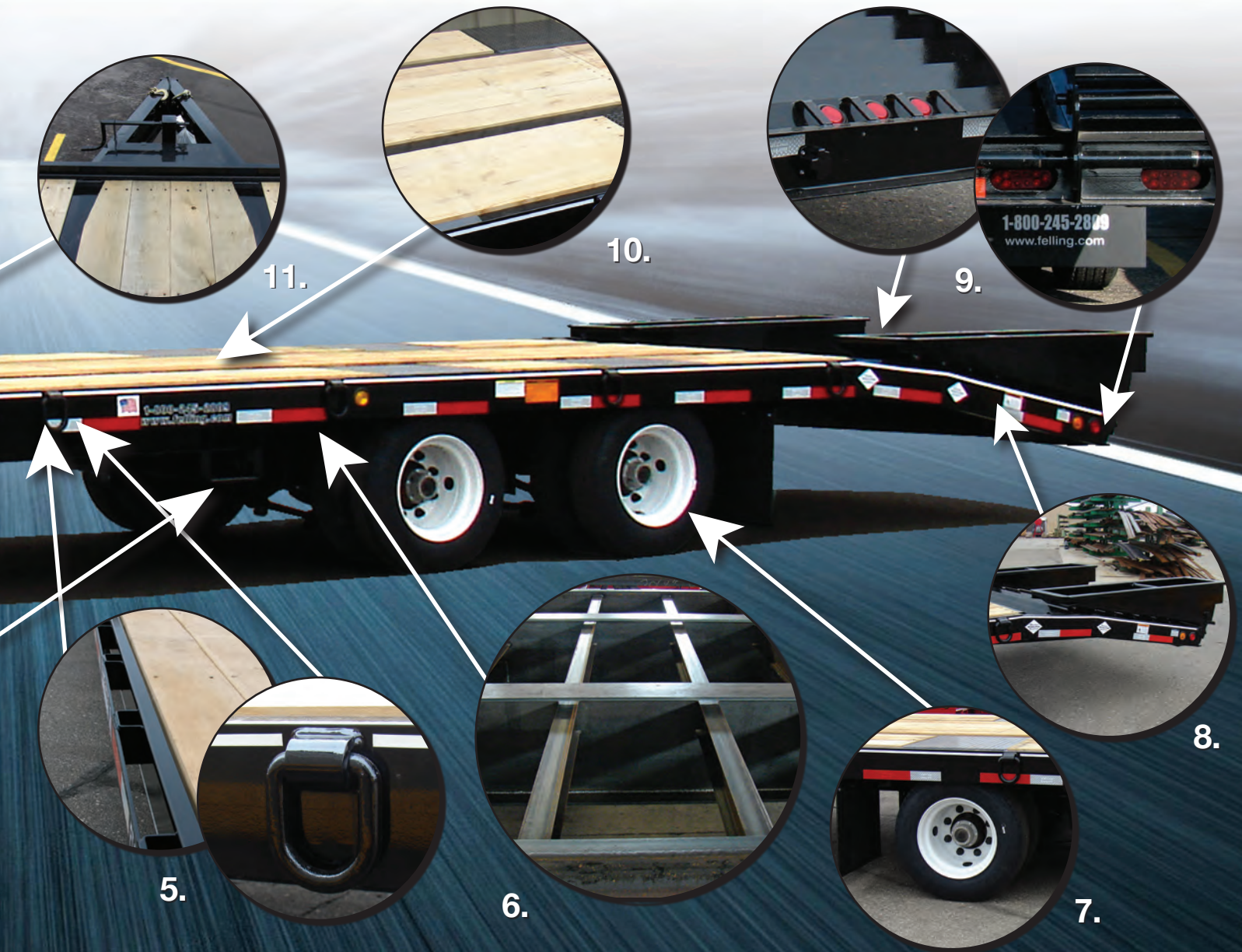


STANDARD FEATURES (20,000 lb. to 60,000 lb. capacities)

- 1.) Hitch - 2.5" Adjustable Lunette Eye 42,000 lb. plate mount on FT-20-2 LP and FT-24-2 LP
3" Adjustable Lunette Eye 66,000 lb. plate mount on FT-30-2 LP thru FT-60-4 LP
- 2.) Air Brake Glad Hand Storage
- 3.) Jack - 12,000 lb. Drop-Leg (FT-20-2 LP thru FT-24-2 LP)
25,000 lb. 2-Speed Drop-Leg (FT-30-2 LP thru FT-60-4 LP)
**Optional - 140,000 lb. 2-speed jacks shown on trailer above*
- 4.) Side Step - (2) Side Step locations; on the tongue and in front of the tires.
- 5.) Tie Downs - 1" Heavy Duty D-Rings (8-14 dependent upon model/ Stake & Strap - optional)
- 6.) Main Frame - Pierced Frame Construction consisting of 4" Jr. I-Beam crossmembers, 16" on center, inserted through the fabricated/engineered main frame beams.

Deck Height* - 33" loaded deck height on all LP models except the FT-60-3 LP,
(Approx. Loaded) FT-60-3 LP has an approximate loaded deck height of 41"

PIERCED FRAME

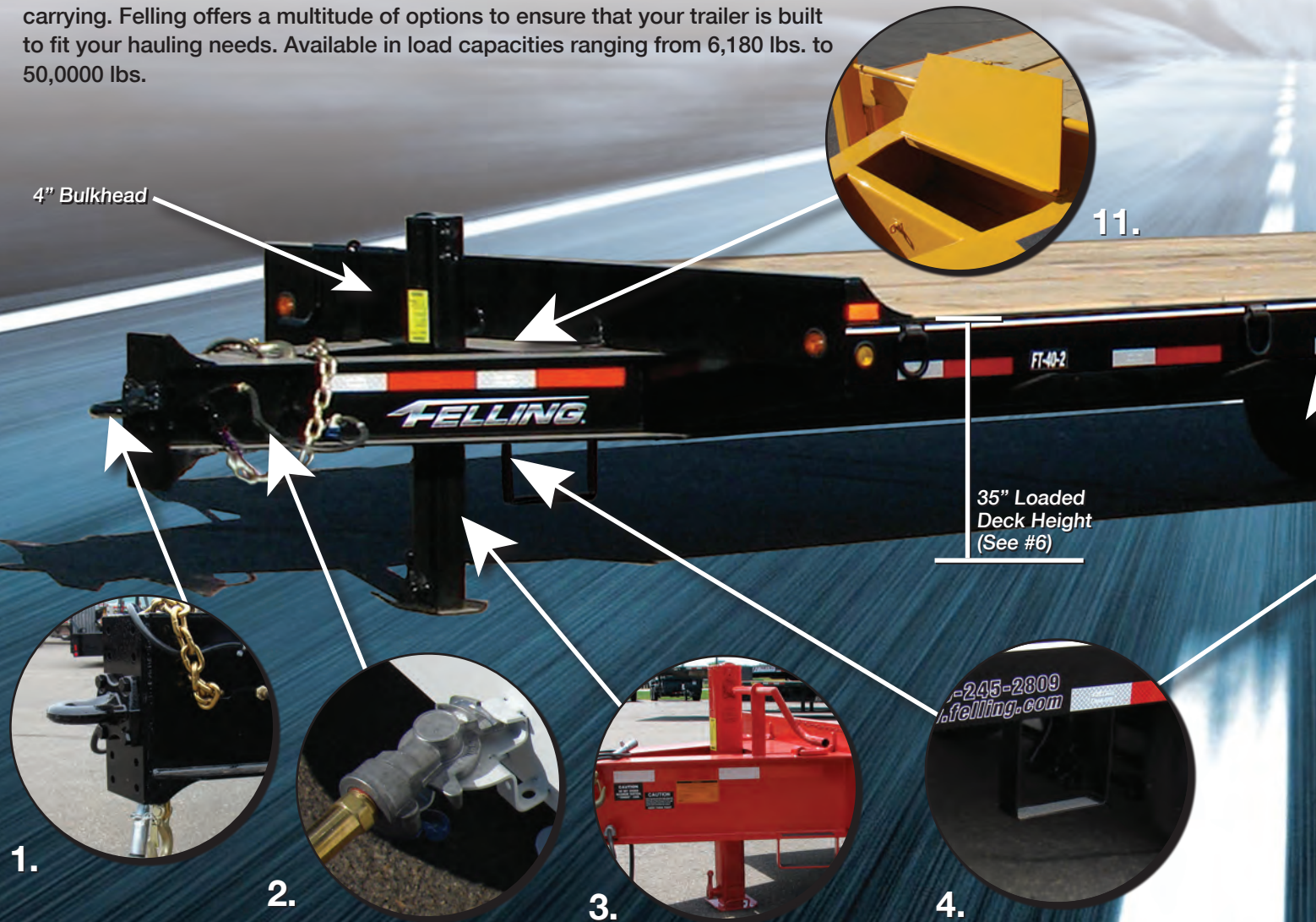


- 7.) Axles & Suspension - FT-20-2 LP: 10K Dexter Oil Bath with Spring Suspension
FT-24-2 LP & FT-36-3 LP: 12K Dexter Oil Bath with Spring Suspension
FT-30-2 LP & FT-45-3 LP: 15K Dexter Oil Bath with 9700 Hutch Suspension (49" Spread)
FT-40-2 LP & FT-50-3 LP: 25K Meritor Oil Bath with 9700 Hutch Suspension (49" Spread)
FT-60-3 LP & FT-60-4 LP: 25K Meritor Oil Bath with 9700 Hutch Suspension (49" Spread)
- 8.) Beavertail & Ramps - 5' Self-cleaning angle-iron beavertail and 5' x 20" angle-iron, spring-assist ramps
FT-60-3 LP - 6' Self-cleaning angle-iron beavertail & 5' x 20" angle-iron, spring-assist ramps
**Optional - Double incline beavertail shown on trailer above*
- 9.) Lights - D.O.T. approved recessed LED lights with sealed wiring harness.
- 10.) Decking - White Oak 2" Nominal with Tread Plate over the wheels providing additional clearance for wheels and tires when the trailer is loaded.
- 11.) Beam Flange - The flange of the main frame beam is fabricated so that it is wider at the bulkhead to give additional strength at a critical stress area providing stability.
- 12.) Toolbox - Lockable Toolbox in Hitch.

INDUSTRIAL DECK-OVER TAGS

When details matter, there's only *One* choice...Felling Industrial Tag Trailers.

Acclaimed as "The most durable trailer on the market", Felling Deck-Over Trailers give you the versatility and durability to haul almost anything. We know the most important thing about your trailer is the load that it is carrying. Felling offers a multitude of options to ensure that your trailer is built to fit your hauling needs. Available in load capacities ranging from 6,180 lbs. to 50,000 lbs.



STANDARD FEATURES (6,180 lb. to 50,000 lb. capacities)

- 1.) Hitch - 2.5" Adjustable Lunette Eye 42,000 lb. plate mount on FT-10-2 thru FT-24-3
3" Adjustable Lunette Eye 66,000 lb. plate mount on FT-30-2 thru FT-50-3
- 2.) Air Brake Glad Hand Storage
- 3.) Jack - 12,000 lb. Drop-Leg (FT-10-2 thru FT-24-3)
25,000 lb. 2-Speed Drop-Leg (FT-30-2 thru FT-50-3)
- 4.) Side Step - (2) Side Step locations; on the tongue and in front of the tires
- 5.) Tie Downs - (8) 1" Heavy Duty D-Rings, (10) on FT-40-2 thru FT-50-3 (Stake & Strap - optional)
- 6.) Main Frame - Stacked Frame Construction consisting of 4" Jr. I-Beams are welded on top of main frame beams (18" to 22" on center)

Deck Height - FT-10-2 to FT-24-3 (34"), FT-30-2 to FT-50-3 (35")
(Approx. Loaded)

STACKED FRAME



- 7.) Axles / Suspension - FT-10-2, FT-12-2 & FT-18-3 : 6K Dexter Straight with Spring Suspension
 FT-14-2 & FT-20-3: 7K Dexter Straight with Spring Suspension
 FT-16-2 & FT-24-3: 8K Oil Bath Straight with Spring Suspension
 FT-18-2: 9K Dexter Oil Bath with Spring Suspension
 FT-20-2 & FT-30-3: 10K Dexter Oil Bath with Spring Suspension
 FT-24-2 & FT-36-3: 12K Dexter Oil Bath with Spring Suspension
 FT-30-2 & FT-45-3: 15K Dexter Oil Bath with 9700 Hutch Suspension (49" Spread)
 FT-40-2: 25K Meritor Oil Bath with 9700 Hutch Suspension (49" Spread)
 FT-50-3: 25K Meritor Oil Bath with 9700 Hutch Suspension (49" Spread)
- 8.) Lights - D.O.T. approved recessed LED lights with sealed wiring harness
- 9.) Beavertail & Ramps - FT-10-2 and FT-12-2 wood inlaid beavertail and 5' x 20" angle-iron, spring-assist ramps
 FT-14-2 to FT-50-3 self-cleaning angle-iron beavertail & 5' x 20" angle-iron, spring-assist ramps
- 10.) Decking - White Oak - 2" Nominal Staggered Decking
- 11.) Toolbox - Lockable Toolbox in Hitch

OPTIONAL FEATURES

CUSTOMIZATION: Definition - To modify or build according to individual or personal specifications or preference.

Felling Trailers believes that when it comes to building a trailer, it should be "Built YOUR WAY." We build trailers to accommodate your equipment and to suit your needs, right down to the last detail. The options and features are limitless...contact Felling Trailers to design the trailer that is right for you.

DECKING OPTIONS



Wood: White Oak 2" Full, White Oak 2" Nominal, Angelim Pedra/Apitong



Bar Grate or Tread Plate



Rubber

LOAD SECUREMENT



Sliding 4" Belt Winch and Track for Sliding Belt Winch



J-Hook



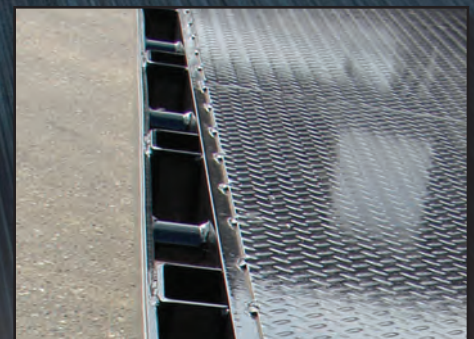
Recessed D-Rings



Swivel D-Rings



Swing-Out Outriggers with 10" Side Channel



Rub Rail with Stake Pockets and Pipe Spoons

Air Ramps (38" or 45")



Wood Inlaid Air Ramps



Air Ramps w/ Flip-Over



FELLING
RAMP
OPTIONS
DECK-OVER SERIES

WE BUILD IT **YOUR WAY.**

FINISHING OPTIONS



Hot Dip Galvanizing



Spray-on Corrosion Liner w/ Paint



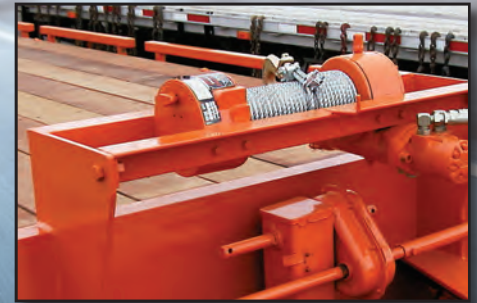
Custom Metallic Paint



2-5/16" Gooseneck Coupler



140,000 lb. Twin 2-Speed Jack,
Spare Wheel & Tire Mounted



Industrial Winch & Mount



Double Incline Beavertail with
Hydraulic Bi-fold Ramps



Air Lift Axle (Requires Air Ride)



Bucket Well in Beavertail



4" x 4" Timber Pockets



Custom Double Deck Well, spare tire cage, 4
lockable toolboxes, hose rack, floor plate deck.



Custom Straight Deck built to be mounted
with Customer's salt/ice spraying systems.

Stand Up Elec/Hyd Ramps



Full Width Hyd. Ramp



Hyd. Bi-Fold Ramps



Center Lift Beavertail



Deck-Over Standard Specifications	Deck Length (starting)	Deck Width	Trailer Weight (Approx.)	Deck Height (loaded)	Frame	Crossmembers	Wheels & Tires	Ramps	Jack	GVWR (lbs.)
Medium & Heavy Deck-Overs										
FT-10-2	16' + 5'	102" OD	3,800 lbs. / 1,723 kg.	34"	8" Structural Chan. 7" Chan. Side Rails	4" Stacked Jr. I-Beam 18"-22" on center	ST225/75R15 D	5' x 20" Angle Iron Spring Assist	12K	9,980
FT-12-2	18' + 5'	102" OD	4,900 lbs. / 2,222 kg.	34"	10" Structural I-Beam 6" Chan. Side Rails	4" Stacked Jr. I-Beam 18"-22" on center	ST235/80R16 E	5' x 20" Angle Iron Spring Assist	12K	16,900
FT-14-2	20' + 5'	102" OD	5,200 lbs. / 2,358 kg.	34"	10" Structural I-Beam 6" Chan. Side Rails	4" Stacked Jr. I-Beam 18"-22" on center	ST235/80R16 E	5' x 20" Angle Iron Spring Assist	12K	19,200
FT-16-2	20' + 5'	102" OD	5,400 lbs. / 2,449 kg.	34"	10" Structural I-Beam 6" Chan. Side Rails	4" Stacked Jr. I-Beam 18"-22" on center	215/75R17.5 H	5' x 20" Angle Iron Spring Assist	12K	21,400
FT-18-2*	20' + 5'	102" OD	5,800 lbs. / 2,630 kg.	34"	10" H-Beam 7" Chan. Side Rails	4" Stacked Jr. I-Beam 18"-22" on center	ST235/80R16 E	5' x 20" Angle Iron Spring Assist	12K	23,800
FT-20-2*	20' + 5'	102" OD	5,900 lbs. / 2,676 kg.	34"	10" H-Beam 7" Chan. Side Rails	4" Stacked Jr. I-Beam 18"-20" on center	ST235/80R16 E	5' x 20" Angle Iron Spring Assist	12K	25,900
FT-24-2*	20' + 5'	102" OD	6,600 lbs. / 2,993 kg.	34"	10" H-Beam 7" Chan. Side Rails	4" Stacked Jr. I-Beam 18"-22" on center	ST235/80R16 E	5' x 20" Angle Iron Spring Assist	12K	30,600
FT-30-2*	20' + 5'	102" OD	8,200 lbs. / 3,719 kg.	35"	10" H-Beam 7" Chan. Side Rails	4" Stacked Jr. I-Beam 18"-20" on center	215/75R17.5 H	5' x 20" Angle Iron Spring Assist	25K	38,200
FT-40-2	20' + 5'	102" OD	9,200 lbs. / 4,173 kg.	35"	10" H-Beam 7" Chan. Side Rails	4" Stacked Jr. I-Beam 18"-20" on center	215/75R17.5 H	5' x 20" Angle Iron Spring Assist	25K	45,520**
FT-45-3	24' + 5'	102" OD	9,900 lbs. / 4,490 kg.	35"	10" H-Beam 7" Chan. Side Rails	4" Stacked Jr. I-Beam 18"-22" on center	215/75R17.5 H	5' x 20" Angle Iron Spring Assist	25K	54,900
FT-50-3	24' + 5'	102" OD	10,900 lbs. / 4,944 kg.	35"	10" H-Beam 7" Chan. Side Rails	4" Stacked Jr. I-Beam 18"-22" on center	215/75R17.5 H	5' x 20" Angle Iron Spring Assist	25K	60,900
Low Profile (LP) Deck-Overs										
FT-20-2 LP	20' + 5'	102" OD	5,900 lbs. / 2,676 kg.	33"	14" Cambered Fab. Beam 7" Chan. Side Rails	4" Pierced Jr. I-Beam 16" on center	ST235/80R16 E	5' x 20" Angle Iron Spring Assist	12K	25,900
FT-24-2 LP	20' + 5'	102" OD	6,600 lbs. / 2,993 kg.	33"	14" Cambered Fab. Beam 7" Chan. Side Rails	4" Pierced Jr. I-Beam 16" on center	ST235/80R16 E	5' x 20" Angle Iron Spring Assist	12K	30,600
FT-30-2 LP	20' + 5'	102" OD	8,200 lbs. / 3,719 kg.	33"	14" Cambered Fab. Beam 7" Chan. Side Rails	4" Pierced Jr. I-Beam 16" on center	215/75R17.5 H	5' x 20" Angle Iron Spring Assist	25K	38,200
FT-40-2 LP	20' + 5'	102" OD	9,200 lbs. / 4,173 kg.	33"	14" Cambered Fab. Beam 7" Chan. Side Rails	4" Pierced Jr. I-Beam 16" on center	215/75R17.5 H	5' x 20" Angle Iron Spring Assist	25K	45,520**
FT-45-3 LP	20' + 5'	102" OD	9,900 lbs. / 4,490 kg.	33"	14" Cambered Fab. Beam 7" Chan. Side Rails	4" Pierced Jr. I-Beam 16" on center	215/75R17.5 H	5' x 20" Angle Iron Spring Assist	25K	54,900
FT-50-3 LP	24' + 5'	102" OD	10,900 lbs. / 5,170 kg.	33"	14" Cambered Fab. Beam 7" Chan. Side Rails	4" Pierced Jr. I-Beam 16" on center	215/75R17.5 H	5' x 20" Angle Iron Spring Assist	25K	60,900
FT-60-3 LP	24' + 6'	102" OD	11,400 lbs. / 5,170 kg.	41"	17" Cambered Fab. Beam 7" Chan. Side Rails	4" Pierced Jr. I-Beam 16" on center	255/70R22.5 H	5' x 20" Angle Iron Spring Assist	25K	71,400
FT-60-4 LP	28' + 6'	102" OD	11,400 lbs. / 5,170 kg.	33"	17" Cambered Fab. Beam 7" Chan. Side Rails	4" Pierced Jr. I-Beam 16" on center	215/75R17.5 H	5' x 20" Angle Iron Spring Assist	25K	71,400

*Triple Axle Configurations Available.
Measurements are approximate • Some models may be shown with optional equipment

**GVWR increase to 49,200 with 235/75R17.5 Tires
All specifications are subject to change



Your **FELLING TRAILERS** Dealer:

FELLING TRAILERS

Manufactured & Distributed by: **Felling Trailers, Inc.**
1525 Main St. S. • Sauk Centre, MN 56378
(320) 352-5239 • (320) 352-5230 FAX

Visit us online at **www.felling.com**

E-mail us at: **trailers@felling.com**

Call 1-800-245-2809 for your nearest dealer.

©2013 Felling Trailers, Inc. Form No. DO-101 9/13 Printed in U.S.A.