



SOFTWARE

Maintain

EQUIPMENT MAINTENANCE & REPAIR ELEMENT



KEY BENEFITS

- Minimizes unscheduled downtime
- Streamlines shop operations
- Improves overall equipment effectiveness
- Accurately tracks equipment
- Reduces yearly maintenance costs
- Utilizes one shared database for single point resource data entry

FEATURES

- User Defined Preventative Maintenance Plans
- Work Order Planning & Scheduling
- Repair Requests
- Equipment Portal for Field Users
- Tablet Application for Mechanics
- E-mail Report Subscriptions
- User Security
- And More

Keep your equipment on the job

Your equipment is either making you money or costing you money. B2W Maintain keeps your revenue producing equipment on the job by minimizing unplanned downtime and optimizing production. How? By facilitating communication about equipment maintenance between the shop and field; tracking information about utilization and costs; coordinating proactive preventative maintenance programs; enabling planning and tracking of maintenance activities in the field and in the shop; and providing information for strategic fleet planning and budgeting.

Streamline work order scheduling

Streamlining the work order planning and scheduling process allows for shortened resolution times for work orders and balancing of work between resources. With B2W Maintain, you can group multiple requests into a single work order, and attach diagrams, photographs and schematics to show exactly what is happening. You can also review your planned work schedule, identify and analyze repair information, and view a history of equipment repairs.

See what you have and where you have it

B2W Maintain's Equipment Resource is an equipment-centric view that lets you track equipment details throughout your operation. In one place you can see maintenance due dates and history for all assets, along with details like category, class, serial numbers, weight and dimensions. Instant access to equipment information allows you to analyze performance efficiency to minimize downtime and failure. And because all equipment resources are shared between modules—B2W Track, Dispatch and Maintain—you know the data is always accurate and up to date.

Solve equipment problems before they happen

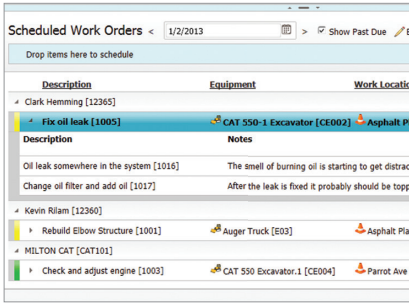
The Preventive Maintenance functionality of B2W Maintain lets you define simple or complex maintenance programs depending on your needs, equipment types and capabilities. It allows you to forecast future maintenance dates, labor requirements, materials, tools and mobilization details for specific pieces or entire categories of equipment. Once



SOFTWARE

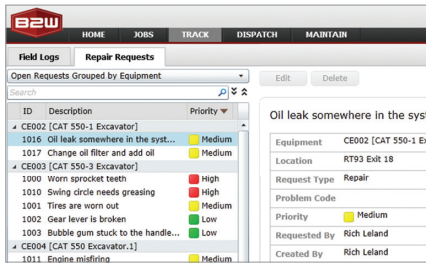
WORK ORDER SCHEDULING

Schedule work orders on a single screen.



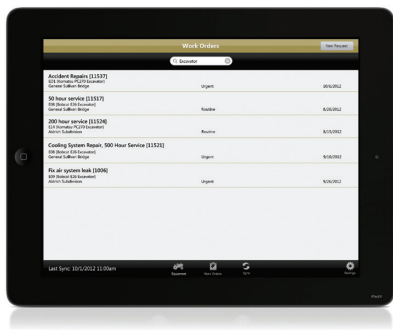
NETWORKED WITH B2W TRACK & DISPATCH

Submit repair requests directly from the field using the Repair Requests tab in B2W Track. Plus, when equipment is scheduled for maintenance or a repair, its status is automatically flagged and updated in B2W Dispatch.



TABLET APP FOR MECHANICS

Allows mechanics to easily view all information necessary to complete work orders.



Maintenance is scheduled, you can add standard tasks, or identify tasks that are overdue. You can even define multiple triggers for a particular preventative maintenance task, or on a specific piece of equipment.

Seamlessly connected to the field

B2W Track's Equipment Portal allows people on job sites to communicate with maintenance staff about the equipment on their field logs or at their job sites for the past seven days. They can create and send repair requests, view and add notes to existing repair requests, and track previously entered requests. This functionality is included with B2W Track licenses for companies that have purchased both B2W Track and Maintain modules.

Tablet application for mechanics

Designed to provide easy access to critical information necessary to complete work orders and assist in daily tasks, the B2W mobile tablet application provides the ability to:

- Track jobs that are ready to be worked on
- Access repair manuals and schematics from the field
- Record task completion and parts used
- Record time spent on a work order, and automatically add it to the mechanic's time card
- Add notes to the work order
- Review, approve and submit mechanic time cards for approval
- Transfer approved time cards to the accounting system
- Review, approve and submit mechanic time cards for approval

THE B2W SOFTWARE ADVANTAGE

Designed and built on the ONE (Operational Networked Elements) platform, B2W is the first and only suite of construction management solutions that puts everyone in your company—from managers in the office to foremen in the field—on the same page at the same time. Separately or as one unified suite, B2W Estimate (estimating & bidding), B2W Track (field tracking & analysis), B2W Dispatch (resource management & dispatching) and B2W Maintain (equipment maintenance & repair management) offer:

- Increased operational efficiencies and accuracy for more profitable jobs
- One operational database for single point data entry that enables instant cross module resource visibility and collaboration
- Operational control through real-time dashboards with easy drill downs
- Comprehensive integration with all major accounting software packages
- Advanced capabilities between the field and the office via tablet application
- Intuitive user interface for streamlined estimating, bidding, logistics, field operations and maintenance