

BROKK

400

NEW 2013!

Diesel



New diesel-powered advantages

THE BIGGER, STRONGER and faster Brokk 400D is yet another impressive step forward for diesel-driven demolition machines – perfect for heavy-duty demolition in places that lack power supply. It outperforms conventional excavators several times heavier with both its breaking power and the ability to get into tight spaces.

The Brokk 400D offers an array of new advantages to the Brokk family. It is the fastest Brokk machine ever, more than 60% faster than other Brokk machines, making it quick and easy to move between work stations or travel longer distances. And the speedier movements increases productivity once at the work site. The Brokk 400D features a new, powerful diesel

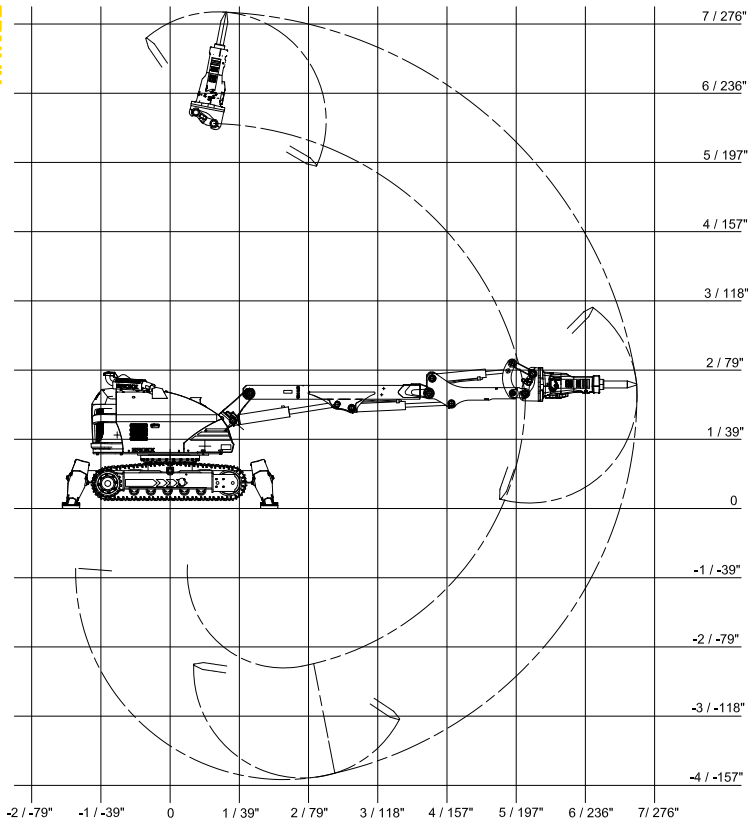
engine, as well as a new undercarriage design that provides an even greater machine stability. To top it all off, the Brokk 400D has longer reach, carries heavier tools and delivers a mighty punch with the bigger hammer that has the potential to even outshine its electric sibling.

As with its electric-powered family members, the Brokk 400D is remote-controlled, providing a safe, ergonomic work environment for the operator combined with the productivity associated with Brokk machines. For work in extreme environments, it can be ordered with a stainless steel hood, heat resistant hoses, extra cylinder protection, an air-cooling system and more.

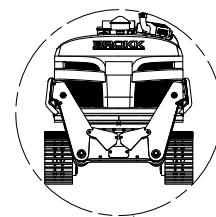
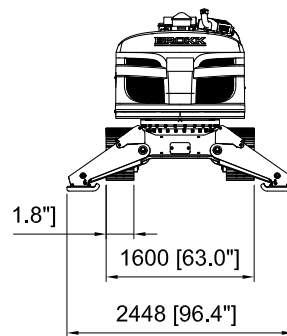
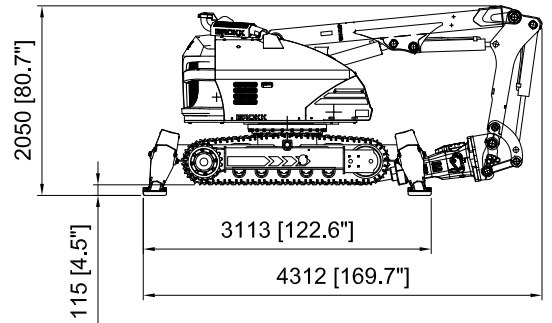
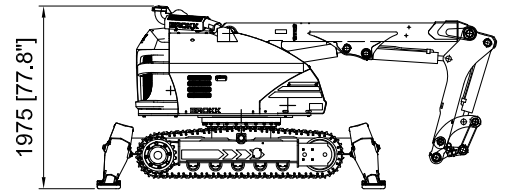
APPLICATIONS

Heavy construction demolition; cleaning of ladles, kilns and furnaces; slag removal and stripping of linings in cement and lime kilns; tunnelling projects and mining applications. It's also extremely effective for open-space work.

RANGE



SIZE



TECHNICAL DATA

Hydraulic breaker in illustrations SB 552
 Load and stability diagram can be ordered from Brokk AB

Performance

Slewing speed 20 sec/360°
 Transport speed, max. 3.4 km/tim; 0.95 m/s; 2.1 mph
 Incline angle, max. 30°

Hydraulic system

Hydraulic system capacity 130 l; 34.3 US gal
 Pump type Variable load-sensing piston pump
 System pressure to cylinders, attachment and motors, max. 17.0 MPa; 2,465 psi
 System pressure, increased to attachment, max 22.0 MPa; 3 143 psi
 Pump flow max 130 l/min; 34.3 US gal/min

Diesel performance

Type Four-cylinder, water-cooled, 4-stroke engine
 Output at 2600 rpm (SAE J1995) 72.8 kW; 97.6 hp
 Fuel tank capacity 80 l; 21.1 US gal
 Engine oil volume with and without filter change 13.2 l; 3.49 US gal
 Coolant volume 10 l; 2.67 US gal
 Freezing point -40°C; 104°F

Control system

Control type Portable control box
 Signal code Digital
 Transfer Cable/Radio

Weight

Weight of basic machine excluding attachment 5,500 kg; 12,125 lbs

Noise level

Sound power level Lwa, measured acc. to directive 2000/14/EC 100 dB(A)

TOOLS

