



Table of Contents

<u>Key Features</u>	<u>1</u>
<u>Performance</u>	<u>2</u>
<u>Operator's Cab</u>	<u>3</u>
<u>Controls</u>	<u>4</u>
<u>Engine</u>	<u>6</u>
<u>Hydraulics</u>	<u>7</u>
<u>HydraTrac™</u>	<u>8</u>
<u>Attachment System</u>	<u>9</u>
<u>Lift Arm</u>	<u>10</u>
<u>Serviceability</u>	<u>11</u>
<u>Specifications</u>	<u>12</u>
<u>Comp. Comparisons</u>	<u>13</u>

ALL-NEW RT SERIES TRACK LOADERS

1750RT • 2100RT



KEY FEATURES

RT Series Track Loaders



MUSTANG[®]

With more than a decade of market experience and track loader industry experience, the two new Mustang track loaders come loaded with industry-exclusive features customers have been seeking for years.

- Yanmar Tier III naturally aspirated diesel engine with 179 ft.-lbs. (242.7 Nm) of torque on the 1750RT and a Yanmar Tier III turbocharged diesel engine with 206 ft.-lbs. (279.3 Nm) torque on the 2100RT.
- AntiStall technology provides the power to handle the largest jobs with ease.
- The industry-exclusive HydraTrac™ Automatic Track Tensioning System eliminates the need for manually tensioning the tracks on the loader before operation.
- State-of-the-art operator's cab features unsurpassed ergonomics, adjustable seat mounted controls and superior comfort and visibility.
- The standard 5x5 Drive Control System offers five settings that change five parameters to suit operator preference and application requirements.
- Welded, dedicated track system enhances grading, tractive effort and provides a smoother ride.

PERFORMANCE

RT Series Track Loaders



The Mustang 1750RT and 2100RT Track Loaders are home-raised thoroughbreds designed with the operator in mind.

- ◆ Optimized radial lift boom offers enhanced strength, optimal forward reach at trailer loading and dumping heights, and more than 127.5" (3239 mm) of lift height—higher than any competitor in their respective weight classes.
- ◆ Designed from the ground up, the welded chassis aids in superior weight distribution, which further enhances stability, grading, tractive effort and provides a smoother ride.
- ◆ Flush rear door and angled rear towers provide tight rear clearance radius and excellent visibility.
- ◆ Optional rear bumper/counterweight provides additional protection and towing capability.
- ◆ Thick steel plating and heavy-duty pins and bushings strengthen the loader for extreme-duty work.
- ◆ Electronic engine control and foot throttle allow operation at partial throttle, reducing sound levels and fuel consumption.

MUSTANG[®]

OPERATOR'S CAB

RT Series Track Loaders



The extra-large, state-of-the-art operator's station on the new RT Series track loaders is developed for optimal operator comfort.

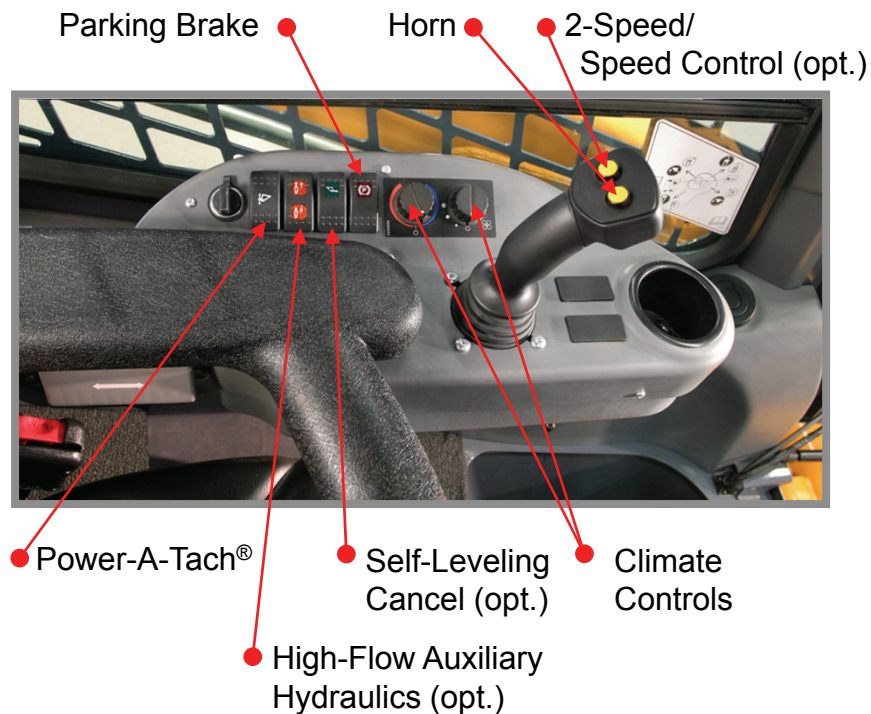
- Cab forward design enhances the view to the bucket. Level II FOPS is standard equipment.
- New side-folding restraint bars and armrests with multiple adjustments enhance operator safety and comfort.
- Fully adjustable controls mounted to a standard mechanical suspension seat or an optional air-ride seat deliver outstanding comfort and precision control by moving with the operator during operation.
- Complicated gauges and cluttered dash readouts are eliminated with a customizable, easy-to-use multi-function display that incorporates all warning/operation lights and machine configuration screens.
- Optional pressurized sealed cab enclosure with heat/AC, sound reduction material and rear-mounted air filter provide a comfortable, clean and quiet operating environment.

Visit <http://www.mustangmfg.com/MakeTracks/Video.aspx> to see it in action.



CONTROLS

RT Series Track Loaders



Left-Hand Controls

MUSTANG®

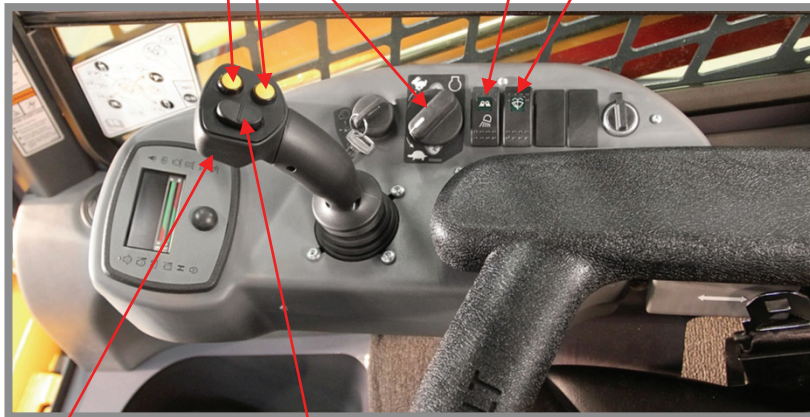
Controls on the Mustang RT Series Track Loaders are ergonomically designed to reduce operator fatigue, increase productivity and improve versatility.

- ◆ Electro-hydraulic joystick controls provide the ultimate in operator comfort and controllability. They are also not affected during cold weather operation.
- ◆ Hydraloc™ system applies parking brakes whenever the operator raises the restraint bars, leaves the operator's seat, opens the door or switches off the ignition.
- ◆ Standard selectable 2-speed drive motors, horn, and backup alarm.
- ◆ Optional speed control adds ability to tailor machine operating speeds to application, independent of engine rotation.
- ◆ Standard ISO drive pattern, optional selectable ISO and dual hand (H-pattern) controls.

CONTROLS

RT Series Track Loaders

- HydraGlide™ Ride Control (opt.)
- Work Lights
- Lift Arm Float
- Hand Throttle
- Windshield Wiper/Wash



- Proportional Auxiliary Hydraulics Lock (Underside)
- Proportional Auxiliary Hydraulics



Right-Hand Controls

MUSTANG®

- Multi-purpose LCD display provides easy readout during operation. Single button allows simple scrolling and selection of various display and configuration functions.
- Standard “5x5” Drive Control System offers five settings that change five parameters to suit operator preference skill and application requirements. The “5x5” Drive Control System offers five presets that change joystick sensitivity, position reaction, engine response, anti-stall and pump swash plate position.
- Standard adjustable proportional auxiliary hydraulics up to 22 gpm (83 L/min) with auxiliary detent allows the operator to set attachment for continuous operation.
- Optional high flow is available on both models with peak flow of 34.0 gpm (128.8 L/min) (1750RT) and 35.9 gpm (135.8 L/min) (2100RT).
- Optional Hydraglide™ system allows the lift arm to “float” when transporting loads, minimizing loss of material and providing a smoother ride at faster transport speeds.

ENGINE

RT Series Track Loaders



Track loaders need plenty of low-end torque to power through the toughest jobs. The Mustang RT Series engines are ready to deliver.

- Yanmar 4TNV98 naturally aspirated Tier III liquid-cooled diesel engine (1750RT) produces 179 ft.-lbs. (242.7 Nm) of peak torque and 69.9hp (52.1 kW) peak power.
- Yanmar 4TNV98 turbocharged Tier III liquid-cooled diesel engine (2100RT) produces 206 ft.-lbs. (279.3Nm) of peak torque and 72.0 (53.7 kW) peak power.
- Two-speed drive as standard equipment, provides travel speeds over 7.5 mph (12.1 Km/h), provided by “soft-shift” drive motors.
- Automatic glow module engine intake heating system provides superior cold-weather starting.
- Engine warranty, parts and service are handled through dealership servicing in conjunction with Mustang parts and service support.



HYDRAULICS

RT Series Track Loaders



The Mustang RT Series Track Loader hydraulics are engineered to push more material, lift heavier loads and power demanding attachments.

- ◆ Higher system pressure of 3000 psi (207 bar) delivers more hydraulic muscle to power demanding attachments and deliver superior lifting and breakout forces.
- ◆ Standard and optional high-flow auxiliary hydraulics are designed to handle virtually every flow/high-performance attachment. New cast-iron pump design delivers efficient flow at higher temperatures.
- ◆ Lift cylinders incorporate cushioning for smoother operation when lowering the lift arm.
- ◆ Electro-Hydraulic controlled hydrostatic transmission with direct engine coupling provides high operating efficiency and AntiStall technology keeps the power flowing.
- ◆ Powerful track drive motors combined deliver ample pushing power.
- ◆ Auxiliary hydraulic quick couplers easily connect under pressure for fast, efficient attachment changes.

MUSTANG[®]

HydraTrac™

RT Series Track Loaders



Reduce operating costs, save time and boost productivity with the industry-exclusive HydraTrac™ Automatic Track Tensioning System found on Mustang RT Series Track Loaders.

- Patented Mustang HydraTrac™ Automatic Track Tensioning System eliminates the need for manually tensioning the tracks on the loader before operation saving valuable time on the jobsite.
- Increases the life of the tracks (up to 15%* in tested conditions) and bearings by ensuring the proper tension immediately upon start-up and during use, and tension release when the machine is shut down.
- Tracks can be easily removed in the field without the use of a pry-bar or tools by flipping a switch to reverse the system.

Visit <http://www.mustangmfg.com/MakeTracks/Video.aspx> to see it in action.

** NOTE: Track life improvement varies greatly depending on conditions, application and upkeep; results may vary.*



ATTACHMENT SYSTEM

RT Series Track Loaders



Multi-Tach®



Power-A-Tach®

The Mustang RT Series Track Loaders are available with two quick-attach systems designed to enhance jobsite efficiency.

- Multi-Tach® system manually engages and disengages attachments with a single lever.
- Power-A-Tach® system allows for attachment changes electronically at the push of a button, further enhancing jobsite productivity.
- Both systems are compatible with all universal-type track loader attachments.

Visit <http://www.mustangmfg.com/MakeTracks/Video.aspx> to see it in action.



LIFT ARM

RT Series Track Loaders



The robust lift-arm on the RT Series Track Loaders was designed for optimal strength, visibility and capacity.

- Radial lift-arm design has a pin height of 127.5" (339 mm) while providing more than 34" (876 mm) of reach.
- Additional reach and increased dump height result in more efficient load placement and overall performance.
- Low-profile design provides outstanding forward, rear and side visibility.
- Simple "in-line" design increases structural integrity by eliminating the complex geometry and welding found on many competitive "offset" lift arm designs.
- Front channel support and large diameter pivot pins provide exceptional lateral strength and rigidity.
- Lift-arm incorporates dual bucket cylinders and two lift-arm stop blocks on the front of the main frame to evenly distribute digging forces.

MUSTANG[®]

SERVICEABILITY

RT Series Track Loaders



Serviceability is very important to our customers. The new RT Series Track Loaders are sure to exceed your service expectations.

- Large, gas-spring assisted engine cover and oversized, flush-mounted rear door allows full access on the rear of the machine for servicing and maintenance.
- Lockable compartments on the rear towers open to reveal the battery (left) and hydraulic tank (right).
- Entire ROPS/FOPS assembly tilts rearward with large gas-springs for easy internal service access.
- Track rollers and idlers are sealed and require no maintenance.
- Patented tilt-out foot pod allows for best-in-class foot well cleanout and provides perfect access to the fuel tank and other components under the cab.
- Coded wiring takes the guesswork out of electrical system identification.

Visit <http://www.mustangmfg.com/MakeTracks/Video.aspx> to see it in action.

SPECIFICATIONS

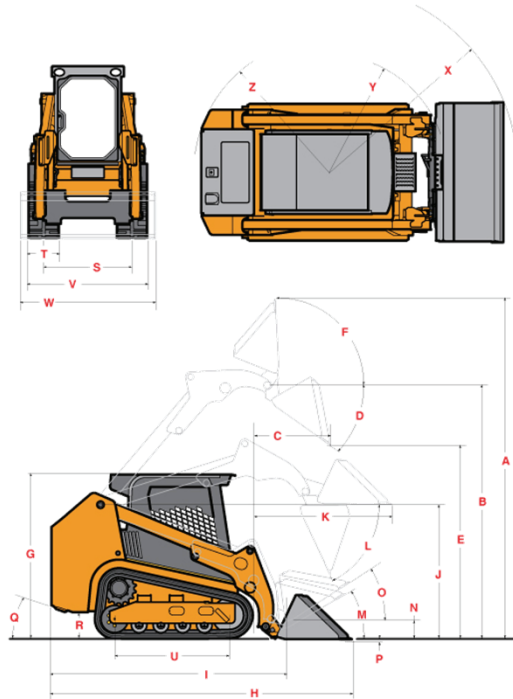
1750RT

DIMENSIONS

(A) Overall Operating Height	168.0" (4267 mm)
(B) Height To Hinge Pin - Fully Raised	127.5" (3239 mm)
(C) Reach - Fully Raised	34.5" (876 mm)
(D) Dump Angle - Fully Raised	40.2°
(E) Dump Height - Fully Raised	97.0" (2464 mm)
(F) Rollback Angle - Fully Raised	103.0°
(G) Overall Height @ ROPS	82.8" (2103 mm)
(H) Overall Length with Bucket	143.5" (3645 mm)
(I) Overall Length - Less Bucket	110.8" (2814 mm)
(J) Specified Height	67.1" (1704 mm)
(K) Reach @ Specified Height	50.8" (1290 mm)
(L) Dump Angle @ Specified Height	75.0°
(M) Rollback Angle @ Ground	30.0°
(N) Carry Position	7.0" (179 mm)
(O) Rollback Angle @ Carry Position	31.0°
(P) Digging Position (+ / - Below Grade)	-0.3" (7.6 mm)
(Q) Angle of Departure with Standard Counterweight	30.4°
(R) Ground Clearance	13.5" (343 mm)
(S) Track Gauge	52.3" (1328 mm)
(T) Track Shoe Width	12.6" (320 mm)
(U) Crawler Base	55.3" (1405 mm)
(V) Overall Width - Less Bucket	64.9" (1649 mm)
(W) Bucket Width	65.9" (1674 mm)
(X) Clearance Radius - Front with Bucket	91.1" (2314 mm)
(Y) Clearance Radius - Front Less Bucket	58.7" (1491 mm)
(Z) Clearance Radius - Rear with Standard Counterweight	65.6" (1666 mm)

ENGINE

Make	Yanmar
Model	4TNV98 EPA Tier III
Type	4-Stroke Naturally Aspirated Diesel
Displacement	203 cu.in. (3.319 L)
Net Power @ 2500 rpm	68.4 (51.0 kW)
Maximum Torque @ 1600 rpm	179 ft.-lbs. (242.7 Nm)



HYDRAULIC SYSTEM

Std. Auxiliary Hydraulics @ 2500 Rpm	19.8 gpm (74.9 L/min)
Opt. High Flow Aux. Hyd. @ 2500 Rpm	34.0 gpm (128.8 L/min)
System Pressure	3000 psi (207 bar)
Reservoir Capacity	11.0 gal. (41.6 L)
Tractive Effort	11,840 lbs. (5371 kg)

CAPACITIES / WEIGHTS

Rated Operating Capacity @ 35%	1750 lbs. (794 kg)
Tipping Capacity	5000 lbs. (2268 kg)
Operating Weight	8605 lbs. (3903 kg)
Fuel Tank	24.4 gal. (92 L)



SPECIFICATIONS

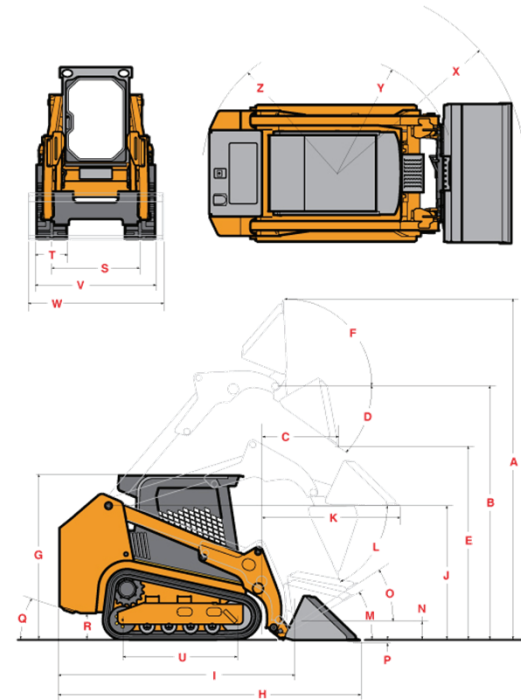
2100RT

DIMENSIONS

(A) Overall Operating Height	171.0" (4343 mm)
(B) Height To Hinge Pin - Fully Raised	128.0" (3251 mm)
(C) Reach - Fully Raised	37.0" (940 mm)
(D) Dump Angle - Fully Raised	39°
(E) Dump Height - Fully Raised	93.5" (2375 mm)
(F) Rollback Angle - Fully Raised	102.5°
(G) Overall Height @ ROPS	82.8" (2103 mm)
(H) Overall Length with Bucket	153.5" (3899 mm)
(I) Overall Length - Less Bucket	114.5" (2908 mm)
(J) Specified Height	67.5" (1715 mm)
(K) Reach @ Specified Height	53.5" (1359 mm)
(L) Dump Angle @ Specified Height	76.2°
(M) Rollback Angle @ Ground	31.1°
(N) Carry Position	9.5" (241 mm)
(O) Rollback Angle @ Carry Position	34.0°
(P) Digging Position (+ / - Below Grade)	-0.2" (5.1 mm)
(Q) Angle of Departure with Standard Counterweight	29.2°
(R) Ground Clearance	13.0" (330 mm)
(S) Track Gauge	52.1" (1323)
(T) Track Shoe Width	17.7" (450 mm)
(U) Crawler Base	59.0" (1499 mm)
(V) Overall Width - Less Bucket	70.3" (1786 mm)
(W) Bucket Width	73.9" (1877 mm)
(X) Clearance Radius - Front with Bucket	99.8" (2535 mm)
(Y) Clearance Radius - Front Less Bucket	60.1" (1527 mm)
(Z) Clearance Radius - Rear with Standard Counterweight	67.5" (1715 mm)

ENGINE

Make	Yanmar
Model	4TNN98 EPA Tier III
Type	4-Stroke Turbo Diesel
Displacement	203 cu.in. (3.319 L)
Net Power @ 2500 rpm	70.7 (52.7 kW)
Maximum Torque @ 1600 rpm	206 ft.-lbs. (279.3 Nm)



HYDRAULIC SYSTEM

Std. Auxiliary Hydraulics @ 2500 Rpm	21.8 gpm (82.5 L/min)
Opt. High Flow Aux. Hyd. @ 2500 Rpm	35.9 gpm (135.8 L/min)
System Pressure	3000 psi (207 bar)
Reservoir Capacity	11.0 gal. (41.6 L)
Tractive Effort	12,359 lbs. (5606 kg)

CAPACITIES / WEIGHTS

Rated Operating Capacity @ 35%	2100 lbs. (953 kg)
Tipping Capacity	6000 lbs. (2722 kg)
Operating Weight	9890 lbs. (4486 kg)
Fuel Tank	24.4 gal. (92 L)



1750RT COMPETITIVE COMPARISONS

Make	Mustang	Bobcat	Caterpillar	Takeuchi
Model	1750RT	T180 (Interim Tier 4)	257B Series 3	TL230 Series 2
PERFORMANCE				
Rated Operating Capacity @ 35%	1,750 lbs.	1,800 lbs.	2,500 lbs.	1,880 lbs.
Operating Capacity with Optional Counterweight	1,850 lbs.	INA	INA	2,149 lbs.
Tipping Load	5,000 lbs.	5,331 lbs.	5,344 lbs.	5,400 lbs.
Height to Hinge Pin	127.5"	114.5"	119.1"	119.3"
Dump Height	97.0"	93.4"	90"	93.4"
Dump Reach at Max. Height	34.5"	19.1"	31.1"	28.8"
Bucket Dump Angle	40.2°	44°	50°	38.6°
Bucket Breakout Force	5,189 lbf	3,600 lbf	6,474 lbf	6,728 lbf
Bucket Rollback at Ground Level	30°	30°	INA	39.3°
Arm Lifting Force	4,840 lbf	4,350 lbf	INA	6,709 lbf
Lift Arm Geometry	Radial Lift	Radial Lift	Vertical Lift	Radial Lift
ENGINE				
Engine Make	Yanmar	Kubota	Cat	Kubota
Engine Model	4TNV98-ZNTBL	V2607-DI-TE3B	C3.4 DIT	V3307D1-Turbo
Number of Cylinders	4	4	4	4
Displacement	203 cu. in.	159.6 cu. in.	201 cu. in.	203 cu. in.
Net Power	68.4 hp	66 hp	71 hp	68.4 hp
Rated Speed	2500 rpm	INA	INA	2500 rpm
Maximum Torque	179 ft.-lbs.	INA	INA	182 ft.-lbs.
DRIVE TRAIN				
Max Travel Speed	7.5 mph	7.3 mph	6.9 mph	6.8 mph
Track Size	12.6"	12.6"	INA	12.6"
Tractive Effort	11,840 lbs.	INA	INA	9,106 lbs.
HYDRAULICS				
Auxiliary Hydraulics – Standard	19.8 gpm	16.9 gpm	22 gpm	18 gpm
High-Flow Hydraulics – Optional	34.0 gpm	26.4 gpm	26 gpm	Not available
System Relief Pressure	3000 psi	3250 psi	3335 psi	3000 psi
Self-Leveling Bucket	Standard / Opt. Off	Optional	Optional	Standard
DIMENSIONS				
Reference Bucket Capacity	14.3 cu. ft.	14.0 cu. ft.	INA	14.0 cu. ft.
Overall Length with Bucket	143.5"	130.3"	135.0"	137"
Overall Width	64.9"	66"	66"	62.2"
Reference Bucket Width	66"	68"	INA	67.5"
Height to Top of ROPS	82.8"	76.3"	80.0"	83.9" Canopy / 88" Cab
Ground Clearance	13.5"	10.3"	10.0"	12.2"
Angle of Departure	30°	30°	37°	30°
Track Length on Ground	55.3"	55.2"	59.0"	54.7"
Fuel Tank	24.4 gal.	28 gal.	22.2 gal.	19.8 gal.
Hydraulic Tank / System Reservoir Capacity	11.0 / 18 gal.	4.8 / 9 gal.	9.2 / 14.5 gal.	10.6 / 15.3 gal
Operating Weight	8,605 lbs.	7,975 lbs.	8,060 lbs.	8,311 lbs.



2100RT COMPETITIVE COMPARISONS

Make Model	Mustang 2100RT	Bobcat T630	Caterpillar 279C	Deere CT323D	Takeuchi TL240 Series 2
PERFORMANCE					
Rated Operating Capacity @ 35%	2,100 lbs.	2,230 lbs.	2,240 lbs.	2,295 lbs.	2,624 lbs.
Operating Capacity with Optional Counterweight	2,200 lbs.	INA	2,425 lbs.	INA	2,900 lbs.
Tipping Load	6,000 lbs.	6,371	6,483 lbs.	6,557 lbs.	7,496 lbs.
Height to Hinge Pin	128.0"	121"	123.2"	118"	122.9"
Dump Height	93.5"	93.2"	95.6"	95"	95.8
Dump Reach at Max. Height	37.0"	24.1"	23.4"	28.4"	34.4"
Bucket Dump Angle	39.0°	42.4°	40°	42°	38.5°
Bucket Breakout Force	5,492 lbf	INA	7,308 lbf	5,600 lbf	7,403 lbf
Bucket Rollback at Ground Level	31.1°	30°	INA	32°	30.7°
Arm Lifting Force	5,398 lbf	INA	INA	3,700 lbf	7,425
Lift Arm Geometry	Radial Lift	Radial Lift	Radial Lift	Vertical Lift	Radial Lift
ENGINE					
Engine Make	Yanmar	Kubota	Cat	John Deere	Yanmar
Engine Model	4TNV98-ZNTBL	V3307-DI-T	C3.4 DIT	4024HT	4TNV98I-Turbo
Number of Cylinders	4	4 / 203.3	4	4	4
Displacement	203 cu. in.	203.3	201.0 cu. In.	149 cu. In.	203 cu. in.
Net Power	70.7 hp	72 hp	84 hp	68 hp	83 hp
Rated Speed	2500 rpm	INA	INA	2300 rpm	2500 rpm
Maximum Torque	206 ft.-lbs.	INA	INA	INA	219 ft.-lbs.
DRIVE TRAIN					
Max Travel Speed	7.9 mph	6.6 mph	8.5 mph	8.5	7.2 mph
Track Size	17.7 in.	12.6 in. Std./ 17.7 in. Opt.	INA	12.6 in.	17.7 in.
Tractive Effort	12,349 lbs.	INA	INA	8,000 lbf	11,070 lbs.
HYDRAULICS					
Auxiliary Hydraulics – Standard	21.8 gpm	23	22 gpm	20 gpm	20 gpm
High-Flow Hydraulics – Optional	35.9 gpm	30.5	33 gpm	29 gpm	36.3 gpm
System Relief Pressure	3000 psi	3500 psi	3335 psi	3450 psi	3000 psi
Self-Leveling Bucket	Standard / Opt. Off	Optional	Optional	Standard / Opt. Off	Standard
DIMENSIONS					
Reference Bucket Capacity	20.0 cu. ft.	INA	INA	INA"	INA
Overall Length with Bucket	153.5"	136.8"	144.8"	132"	150"
Overall Width	70.3"	72.9	78.0"	72"	69.7"
Reference Bucket Width	74"	74"	78.0"	INA	76"
Height to Top of ROPS	82.8"	81.3	83.3"	79"	89.4
Ground Clearance	13.0"	9.2"	9.1"	9.8"	12.8"
Angle of Departure	30°	31°	44°	25°	30°
Track Length on Ground	59.0"	59.0"	69.6"	INA	58.9"
Fuel Tank	24.4 gal.	27.4 gal.	26 gal.	19.0 gal	23.8 gal.
Hydraulic Tank / System Reservoir Capacity	11.0 / 21 gal.	INA	11 / 15 gal.	INA"	12.9 / 19.8 gal
Operating Weight	9,890 lbs.	9,015 lbs.	9,892 lbs.	8,550 lbs.	10,115 lbs.

