

# Kubota®



## KUBOTA COMPACT EXCAVATOR

# KX

# KX040-4

The superior compact excavator that combines superior strength and versatility with performance and user-friendly operation.





Superior 4-ton muscle and clean engine performance  
make the KX040-4 the ideal choice for the urban jungle.

# CLEAN AND POWERFUL EX





Kubota's CRS engine gives you the high torque you need to power through any tough task. The CRS electronically controls the timing and amount of fuel injection to lead to less engine noise and better fuel efficiency. In addition, the CRS helps reduce emissions and makes the KX040-4 EPA Tier IV-compliant.

# CAVATOR

## Common Rail System and Diesel Particulate Filter (DPF) Muffler

The Common Rail System (CRS) electronically controls the fuel injection timing and amount in stages rather than all at once for optimal combustion. The results are great efficiency, better fuel economy and less engine noise. Its combination with the Exhaust Gas Recirculation (EGR) and Diesel Particulate Filter (DPF) Muffler reduces harmful emissions to make the KX040-4 Tier IV-compliant.

## Automatic regeneration system

Kubota's original automatic regeneration system automatically burns accumulated particulate matter (soot) in the DPF muffler to keep the muffler clean for longer operation. For safety reasons, automatic regeneration can be turned off with the inhibit switch when the excavator is operating in areas that are prone to fires.



## Introducing ECO PLUS

Kubota's original ECO PLUS prioritizes fuel economy, and supports the environment.

For tough digging applications, use Standard Mode and experience a 3% productivity improvement over the prior model and use less fuel, up to 12% less.

Activate Eco Mode with the flick of a switch for up to 9% fuel savings over Standard Mode.



Eco Mode Switch



Eco Mode Indicator

### STANDARD MODE

- Improved Productivity • Lower Fuel Consumption

*Compared to Prior Model*



### ECO MODE

- Focus on Lower Fuel Consumption



*\*Compared to Standard Mode*





# DELUXE INTERIOR

The KX040-4 raises the standard in 4-ton excavator comfort with a spacious cab that rivals 5-ton excavators. The luxurious cab features a wider entrance, greater legroom and a deluxe seat. Operability is greatly enhanced with more easy-to-use features than ever before.

## New Spacious Cab

Designed for greater comfort, the new large cab with a fully flat floor provides more legroom to minimise fatigue.

### Easy-open Front Slide Window

Unlike many excavator windows, the front glass window of the KX040-4 opens with ease. Just flip the latches on the window sides and slide it up. A gas-assist mechanism makes this action almost effortless.



## Wider Entrance

The KX040-4's larger cab provides a much wider door and more ample foot space, to make getting on and off the excavator a breeze.



E

C

B





Kubota **A**

### **A. Deluxe Suspension Seat**

Designed and engineered to fit better and to keep you working longer comfortably, Kubota's high-back suspension seat reduces strain and minimizes operator fatigue. It reclines to accommodate your individual posture, and offers weight compensation, firm and adjustable wrist support and retractable seat belts.

### **B. 2-speed Travel Switch**

By placing the 2-speed travel switch on the dozer lever, dozing operations can be done faster and easier.



### **C. Cup Holder**

With the convenience of a bigger cup holder, you can quench your thirst and work longer without leaving the cab. Or store your cell phone. The charging port is located conveniently close by.

### **D. Wrist Rest**

A thoughtfully designed wrist rest enhances operation and reduces operator fatigue.

### **E. Air Conditioning**

The overall air circulation in the cab has been improved, thanks to a stronger cooling/heating unit and the positioning of six vents around the operator to offer better all-round comfort.



## **Fully Flat Floor**

For added comfort, the cabin floor is completely flat for greater legroom and a more spacious feel.

### **TPSS**

The Two-Pattern Selection System positioned under the seat allows the operator to shift control styles conveniently while seated. A simple turn of a switch is all it takes to select between the ISO pattern and the SAE backhoe pattern.





# SUPERIOR PERFORMANCE

**KUBOTA**

## Proportional flow control of auxiliary circuit (AUX1/2) and maximum oil flow setting

The KX040-4 is available with a standard AUX1 and optional AUX2 auxiliary circuits. The convenient thumb-operated switch on the lever allows easy proportional flow control of the auxiliary circuit, while a forefinger-operated on/off switch enables simple operation of special applications that require a constant oil flow. The maximum oil flow setting is conveniently adjustable from the digital panel. Up to five flow rates corresponding to specific attachments can be programmed in the memory on the digital panel for easy retrieval for the next job.



## AUX1 diverter valve

With the AUX1 diverter valve, the AUX oil supply can be changed without having to remove the thumb pipeline when the operator wants to use a hydraulic attachment.



## Strong bucket breakout

Even when heavily loaded, the KX040-4 won't slow down, thanks to its powerful breakout force. With the pin-on or quick coupler bucket, the bucket breakout force is more than enough for even the toughest excavating jobs.

## Auto-shift

The auto-shift system enables automatic travel shift from high to low depending on traction effort and terrain. This gives smoother simultaneous operations when dozing and turning.

## Auto idling system

Save fuel with Kubota's Auto Idle. When the control levers are in neutral for more than 4 seconds, the engine RPM automatically idles. Move any control lever and the engine RPM immediately returns. This innovative feature reduces noise and exhaust emissions while reducing operating costs.

## Thumb Bracket And Relief Valves

The hydraulic thumb makes short work of a variety of loading and material handling jobs. The factory installed mount brackets and hydraulics significantly reduce the time needed to mount accessories.



The KX040-4 has the power and versatility to take on almost any task even in the toughest conditions. Combined with improved digging and lifting power, and smoother travel performance, it can get the job done right!

## Hydraulic Angle Blade

Save time and work more efficiently. With a simple movement of the dozer lever, the hydraulic angle blade can be angled to the right or left to push soil to the side as the machine moves forward, eliminating the need for repetitive repositioning at right angles when backfilling trenches.



## Bolt-on cutting edge for angle blade

The bolt-on cutting edge of the dozer's angle blade allows the cutting edge to be replaced easily and inexpensively.

## Tight spots

The angle blade lets you work efficiently in confined spaces, alongside walls, and near busy roads. No wider than the tracks, it's also easy to transport between jobs.

## Easy operation

Angle blade operation has been enhanced for easier control. Up, down and float movements are made with a single lever, while left and right angle positioning is made by the rocker switch on top of the lever.



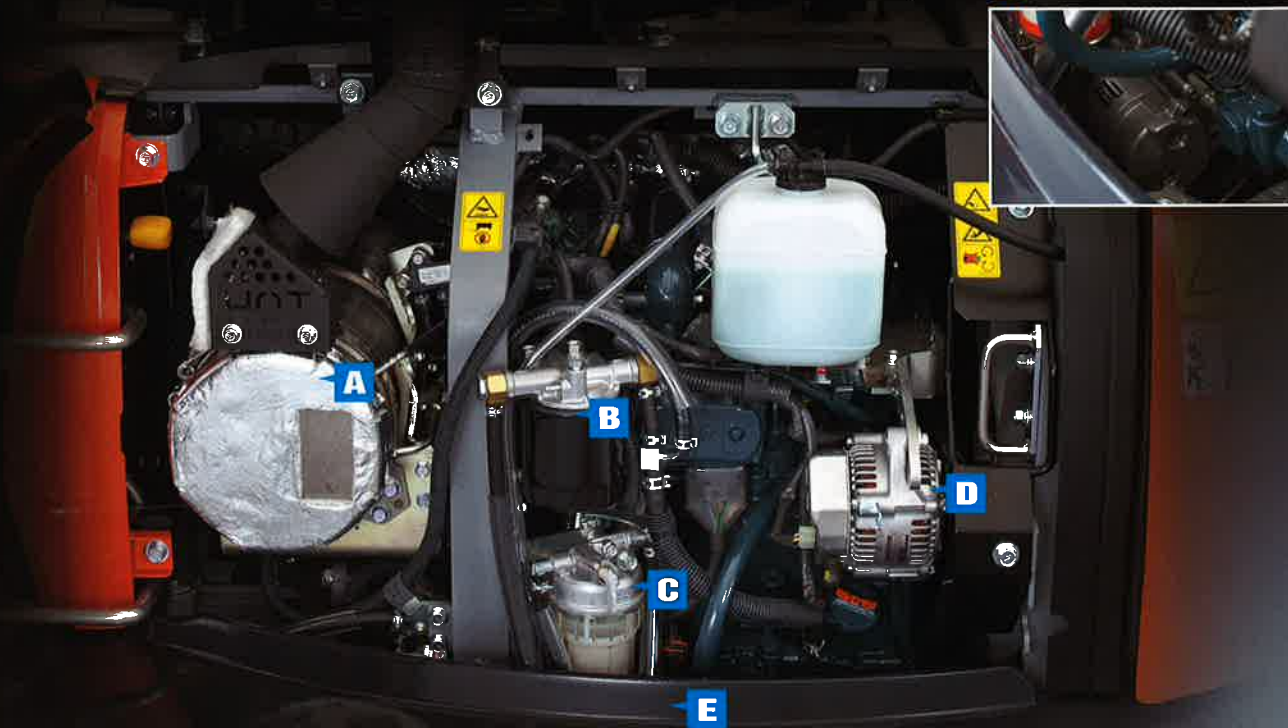
## Float position

You don't need to adjust the dozer height to make a clean ground surface—after backfilling, just travel backward along the covered ditch with the dozer in the float position. The float function is also standard on the straight blade making ground-finishing work fast and easy!

# One-sided Engine Maintenance

Kubota makes it easier for you to keep the KX040-4 in tip-top condition. Full-opening rear and right side hoods make access to the engine, control valves and various components easier for inspections and repairs.

- A.** DPF Muffler
- B.** Fuel Filter
- C.** Water Separator
- D.** Alternator
- E.** Starter Motor



## Two-piece hose design

The two-piece hose connections for the dozer and boom cylinder hoses simplify hose replacement and reduce downtime.

## Protected cylinder hoses

The bucket cylinder hoses are located inside the arm. And the boom cylinder hoses are routed under the boom bottom.

## Centralized swivel bearing lubrication

Grease ports for the swivel bearing, gear teeth, and swing cylinder pin are conveniently grouped on the front of the house.

## Front pin bushings

To maximize durability, we've introduced bushings on all of the pivot points on the front attachment and connecting points on the swing bracket.



# MAINTENANCE & SAFETY

Although your Kubota excavator is state-of-the-art, its maintenance doesn't get much easier. Thanks to the full-opening rear and right side hoods, engine, control valves and various components are accessible for easy inspection and repair.



## Accumulator

The accumulator makes replacing attachments safer and more efficient. Turning the key to the "on" position clears residual pressure in the auxiliary hydraulic hose. If the engine is accidentally shut off while the front attachment is raised, turning the key to the "on" position allows you to safely lower it.

## Safety

Safety is designed into every detail of the KX040-4. An Engine Start Lockout System prevents the engine from starting when the safety levers are lowered. A Safety Lever Lockout System helps prevent unexpected excavator and attachment movement when entering or exiting the machine. An Auto House Parking Brake automatically locks the house in the position it was in when the engine was shut off, eliminating the need for a swing lock pin. It also makes the excavator more compact during transport and more secure when parked on an incline.





# NEW DIGITAL PANEL



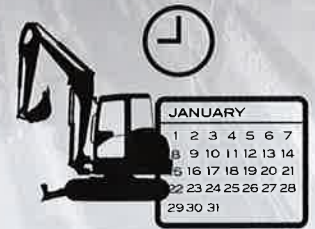
- A. Hour Meter**
- B. Coolant Temperature**
- C. Clock**
- D. Fuel Level**
- E. Engine RPM**



Following the excellence of Kubota's Intelligent Control System, the new digital panel puts convenience at the operator's fingertips. Featuring easier button operation, the user-friendly digital panel is positioned to the front right corner of the operator. This operator-facing wider display greatly improves visibility. With easier access, simpler settings, easy-to-read indicators and alerts, you'll always be aware of the excavator's functioning status.

## Operation History Record

Operation history is automatically recorded on the KX040-4. You can trace back up to 90 days of the machine's usage dates by simply checking the built-in calendar.



**Service Mode**



**Warning Mode**



**Operation History Record**



**Max. Oil Flow Setting (AUX1 and optional AUX2)**

## Automatic regeneration mode

The automatic regeneration system automatically burns particulate matter (soot) that accumulates in the diesel particulate filter (DPF) muffler. The soot is burned when the engine is operating at sufficient engine speed for regeneration. If the engine speed is lower than the required level for regeneration, the indicator requests an increase in the engine speed to keep the accumulation level low and the DPF clean. A service call or DPF filter replacement is required when the accumulated soot reaches a level that reduces the engine speed.





# KX040-4 OPTIONS

## STANDARD EQUIPMENT

### Safety system

- Engine start safety system
- Travel motor with disc brake
- Swivel motor with disc brake
- All hydraulic control

### Working equipment

- Auxiliary hydraulic circuit 1
- 2 working lights on cab and 1 light on the boom
- Dozer blade with float function
- Thumb bracket and relief valve

### Operator's space

- ROPS/FOPS canopy
- Weight-adjustable full suspension seat
- Retractable seat belt
- Hydraulic pilot control levers with wrist rests
- Travel levers with foot pedals
- Two pattern selection system
- Digital panel
- 12V power source
- Cup holder
- Horn

### Engine/Fuel system

- Double element air filter
- Auto idling system
- Water separator with drain cock

### Undercarriage

- Dozer blade with float
- 350 mm rubber track
- 1 x upper track roller
- 4 double-flange track rollers on each side
- 2-speed travel switch on dozer lever
- 2-speed travel with auto-shift

### Hydraulic system

- 1-pump load sensing system
- Pressure accumulator
- Hydraulic pressure checking ports
- Straight travel circuit
- Third line hydraulic return
- Auxiliary switch (AUX1)
- Adjustable maximum oil flow on auxiliary hydraulic circuits 1

### Others

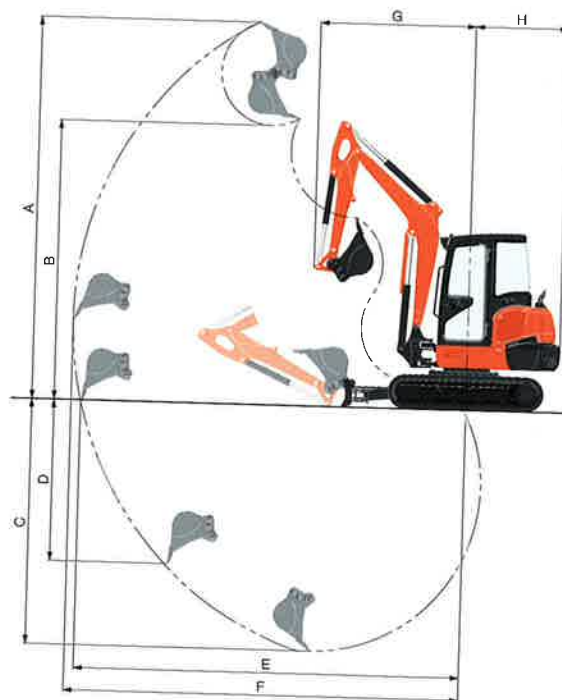
- Tool box
- Grease gun holder

## OPTIONAL EQUIPMENT

- Cab with A/C
- Canopy lights
- Beacon lights
- 1'1.8" (350mm) steel track
- Additional auxiliary hydraulic circuit 2 (adjustable max. oil flow control)
- Angle blade with float function and BOE
- Travel alarm

## WORKING RANGE

Model		KX040-4		
A	Max. digging height	ft. in. (mm)	17'6" (5335)	
B	Max. dumping height	ft. in. (mm)	12'9.5" (3900)	
C	Max. digging depth	ft. in. (mm)	11'2.6" (3420)	
D	Max. vertical digging depth	ft. in. (mm)	7'4.8" (2255)	
E	Max. digging radius, at ground level	ft. in. (mm)	17'9" (5410)	
F	Max. digging radius	ft. in. (mm)	18'2.1" (5540)	
G	Min. turning radius	W/o swing	ft. in. (mm)	7'0.8" (2155)
		W swing	ft. in. (mm)	5'11.1" (1805)
H	Min. tail turning radius	ft. in. (mm)	4'3.2" (1300)	

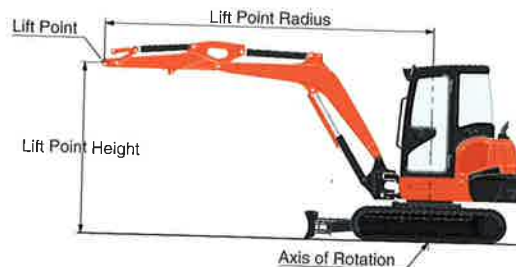


## LIFTING CAPACITY

Cab rubber

LIFT POINT HEIGHT (ft)	LIFTING CAPACITY OVER-FRONT BLADE DOWN unit=1000 lbs			LIFTING CAPACITY OVER-SIDE unit=1000 lbs		
	LIFT POINT RADIUS (ft)			LIFT POINT RADIUS (ft)		
	8	12	14	8	12	14
6	2.70	1.90	1.74	2.70	1.68	1.34
4	3.52	2.11	1.85	2.91	1.64	1.31
2	4.06	2.30	1.95	2.80	1.59	1.29
GL	4.23	2.41	1.99	2.75	1.57	1.27

Machine with cab and rubber crawler, without bucket



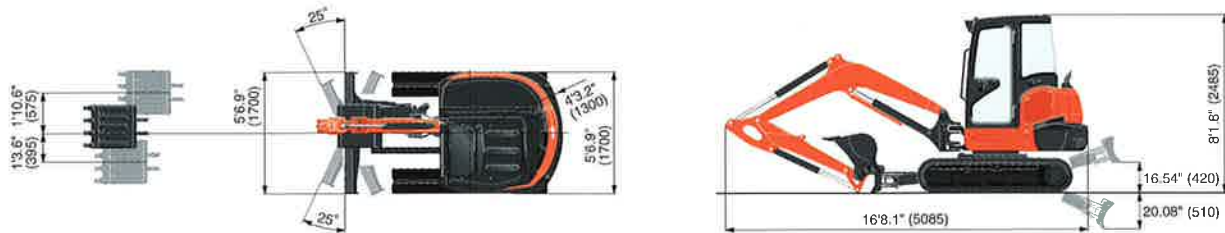


# SPECIFICATIONS

Model		KX040-4		KX040-4 Angle Blade		
Type of ROPS / FOPS		Canopy / Cab				
Type of tracks		Rubber / Steel				
Engine	Model		Kubota D1803-CR-TE4			
	Output (SAE J1995 gross)		HP (kW) / rpm	42.4 (31.6) / 2200		
	Output (SAE J1349 net)		HP (kW) / rpm	✓40.9 (30.5) / 2200		
	Displacement		cu. in. (cc)	111.4 (1826)		
Dimensions	Overall length		ft. in. (mm)	16'8.1" (5085)		
	Overall height		Rubber / Steel	ft. in. (mm)		
				8'1.8" (2485) / 8'1.8" (2485)		
	Overall width		ft. in. (mm)	5'6.9" (1700)		
Min. ground clearance		in. (mm)	12.99" (330)			
Hydraulic system	Pump capacity		GPM (ℓ/min)	24.4 (92.4)		
	Auxiliary hydraulic flow		AUX1 / AUX2	GPM (ℓ/min)		
				17.2 (65) / 9.8 (37)		
Max. breakout force		Bucket / Arm	lbs. (kgf)			
			9535 (4325) / 4112 (1865)			
Drive system	Travel speed		Low / High	mph (km/h)		
				1.8 (2.9) / 3.1 (5.0)		
	Max. traction force		Low speed	lbs. (kgf)		
				9747 (4421)		
	Tumbler distance		ft. in. (mm)		5'7.3" (1710)	
	Crawler length		ft. in. (mm)		7'1.6" (2175)	
Shoe width		ft. in. (mm)		1'1.8" (350)		
Ground contact pressure		Canopy	psi (kPa)	4.33 (29.9) / 4.41 (30.4)		
		Cab	psi (kPa)	4.51 (31.1) / 4.58 (31.6)		
		Canopy	psi (kPa)	4.48 (30.9) / 4.56 (31.5)		
		Cab	psi (kPa)	4.65 (32.1) / 4.72 (32.6)		
Unit swing speed		rpm		9.2		
Boom swing angle		Left / Right		degree		
				70 / 55		
Blade	Dimensions		Width	ft. in. (mm)		
				5'6.9" (1700)		
			Height	in. (mm)	15.75" (350)	
	Max. lift above ground		in. (mm)	15.17" (400)	16.54" (420)	
	Max. drop below ground		in. (mm)	✓15.94" (405)	20.08" (510)	
Angle		Left / Right		degree		
				- / 25 / 25		
Hydraulic oil (Reservoir / System)			gal (ℓ)		11.1 (42) / 19.6 (74)	
Fuel reservoir			gal (ℓ)		16.9 (64)	
Operating weight (Including operator's weight @ 175 lbs.)		Rubber	Canopy / Cab	lbs. (kgf)	✓9017 (4090) / 9326 (4230)	
		Steel	Canopy / Cab	lbs. (kgf)	9370 (4250) / 9678 (4390)	
		Rubber	Canopy / Cab	lbs. (kgf)	✓9171 (4160) / 9480 (4300)	
		Steel	Canopy / Cab	lbs. (kgf)	9524 (4320) / 9833 (4460)	

The company reserves the right to change the above specifications without notice. This brochure is for descriptive purposes only. Please contact your local Kubota dealer for warranty information. For your safety, Kubota strongly recommends the use of a Rollover Protective Structure (ROPS) and seat belt for almost all applications.

# DIMENSIONS



Unit: ft. in. (mm)



## KUBOTA TRACTOR CORPORATION

Kubota Tractor Corporation, 3401 Del Amo Boulevard, Torrance CA 90503  
 Western Division: 1175 S. Guild Ave., Lodi, CA 95240 Tel (209) 334-9910  
 Central Division: 14855 FAA Boulevard, Fort Worth, TX 76155 Tel (817) 571-0900  
 Northern Division: 6300 at One Kubota Way, Groveport, OH 43125 Tel (614) 835-1100  
 Southeast Division: 1025 Northbrook Parkway, Suwanee, GA 30024 Tel (770) 995-8855

Visit our web site at: [www.kubota.com](http://www.kubota.com)

