



**Skyjack Head Office**  
 55 Campbell Rd., Guelph, ON Canada N1H 1B9  
 Sales Inquiries: 1-877-726-4387 (1-877-SJLIFTS)  
 Main Switchboard: 1-800-265-2738  
 Phone: 519-837-0888  
 Fax: 519-837-8104  
 Email: [skyjack@skyjack.com](mailto:skyjack@skyjack.com)  
[www.skyjack.com](http://www.skyjack.com)

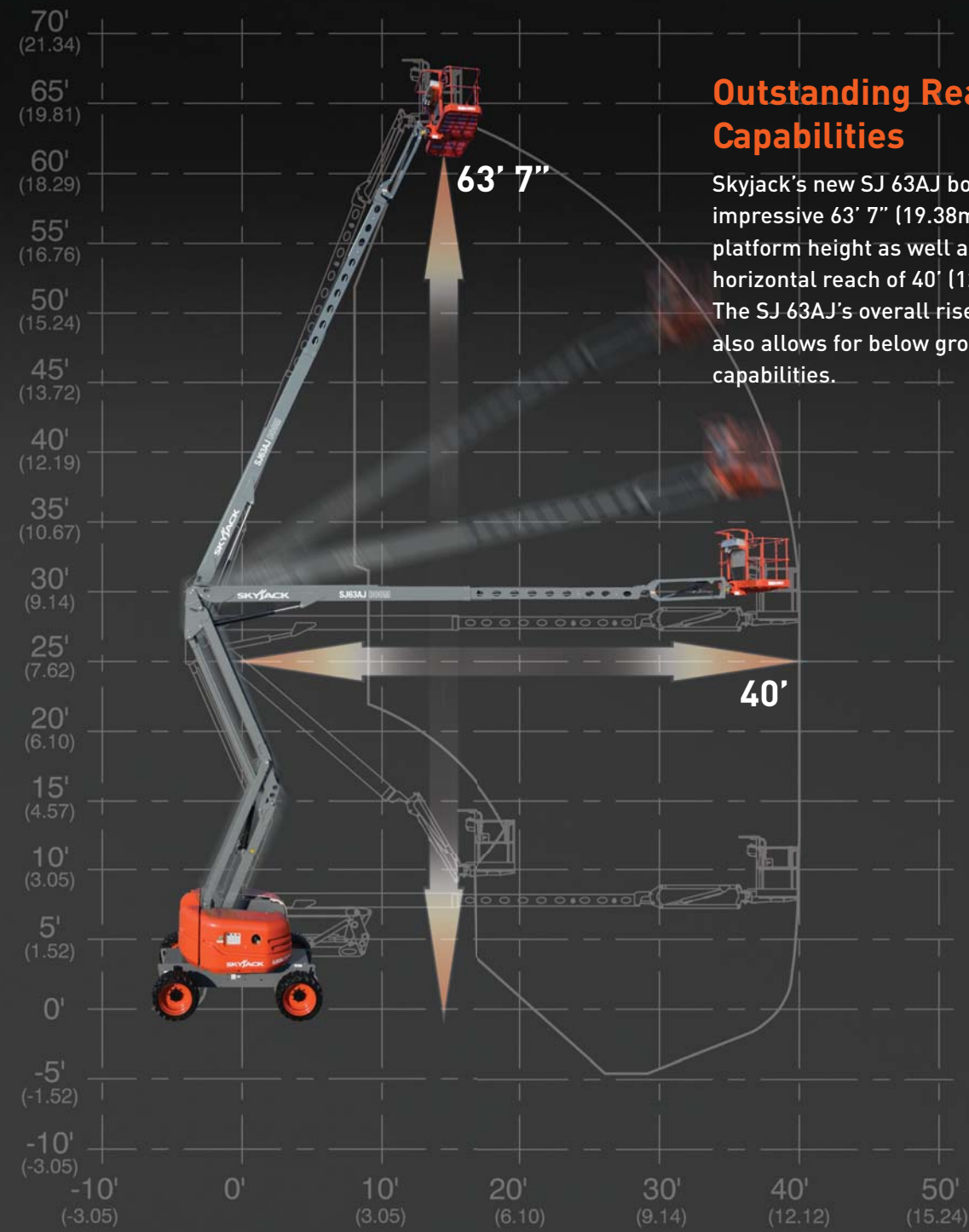


## SJ63AJ ARTICULATING BOOM

This brochure is for illustrative purpose only and based on the latest information at the time of printing. Skyjack Inc. reserves the right to make changes at any time, without notice, to specifications, standard and optional equipment. Consult the Operating Maintenance and Parts Manuals for proper procedures. Work platforms have been tested to comply with ANSI and CSA standards as interpreted by Skyjack, Inc.







### Outstanding Reach Capabilities

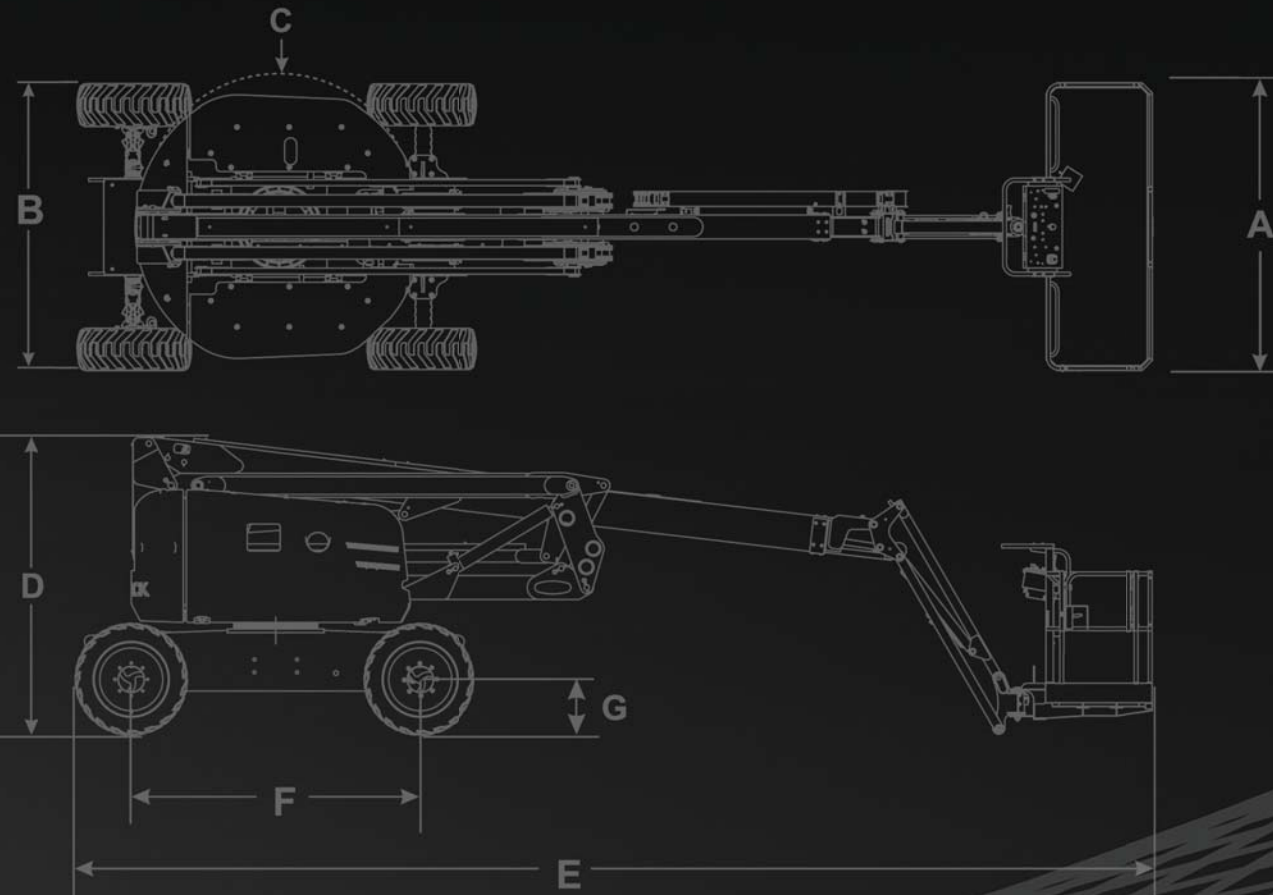
Skyjack's new SJ 63AJ boasts an impressive 63' 7" (19.38m) maximum platform height as well as a maximum horizontal reach of 40' (12.19m). The SJ 63AJ's overall riser design also allows for below ground reach capabilities.

### Stick Boom Functionality

The SJ 63AJ's boom geometry allows the operator to position the unit at full height then using only the single main boom control function, lower the platform all the way to ground level to restock on material or supplies then return to full height. This stick boom functionality adds to the versatility and productivity of Skyjack's newest boom model.

### True Vertical Rise

Common to Skyjack's SJ 46AJ articulating boom, the new SJ 63AJ features True Vertical Rise functionality. When the operator uses the boom's riser control function the boom arm will move in a true vertical manner without drifting forward or back. This reduces the amount of repositioning the operator needs to do in order to stay close to a building façade while working at different heights.



### SPECIFICATIONS

### SJ63 AJ

Platform Height	63' 7" (19.38 m)
Horizontal Reach	40' (12.19 m)
Up and Over Height	27' 4" (8.38 m)
A Platform Size	36" x 96" (0.91 x 2.4 m)
B Stowed Width	96" (2.44 m)
C Tailswing	Zero
D Stowed Height	100" (2.54 m)
E Stowed Length	30' (9.14 m)
F Wheelbase	96" (2.44 m)
G Ground Clearance	13" (0.33 m)
Rotation	360°
Platform Rotation	175°
Jib Length	6' 6" (1.68 m)
Jib Range +/-	+65° / -60°
Weight	21,500 lbs (9,752 kg)
Gradeability	45%
Turning Radius (Inside)	87" (2.21 m)
Turning Radius (Outside)	209" (5.31 m)
Axle Oscillation	8" (0.20 m)
Drive Speed (High speed)	4.5 mph (7.3 km/h)
Capacity	500 lbs (227 kg)
Local Floor Load (With Rated Load)	115 psi (793 kPa)
Overall Floor Load (With Rated Load)	251 psf (12 kPa)
Maximum # of Persons	2
Tire Type	6rip lug air-filled
Diesel Engine	65 HP
Dual Fuel Engine (GM 3.0L Vortech)	82 HP
Fuel Tank Capacity	30.4 gal. (115 L)
Hydraulic Reservoir	30.4 gal. (115 L)

Combining a working height of 69' 7" (21.2 m), a horizontal reach of 40' (12.19 m), and an up and over clearance of 27' 6" (8.38 m), Skyjack's SJ63 AJ is designed for versatility. Superior positive traction and terrainability is provided by the axle based 4WD used in many of Skyjack's product designs, which accounts for a proven low maintenance, rugged and reliable drive train. 360 degree turret rotation and zero tail swing allow for flexible operation in tight locations.

The 63AJ features a unique open center knuckle riser design for improved visibility, compact dimensions, and below grade reach capabilities. Dual lifting cylinders provide superior comfort and stability, while also maintaining true vertical rise which prevents drifting forward or backwards. Other key features include; direction sensing drive and steer controls, analog based controls, and Skyjack's standard color coded and numbered wiring system.



## SJ63 AJ ARTICULATING BOOM



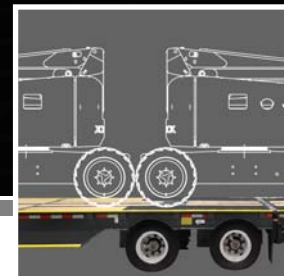
Axle based 4WD system



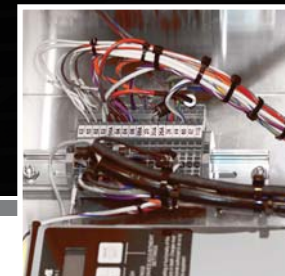
Operator controlled rear axle differential lock



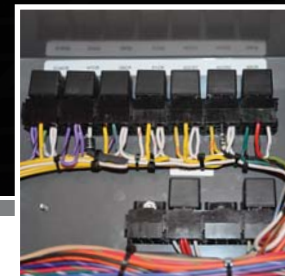
Direction sensing drive and steer controls



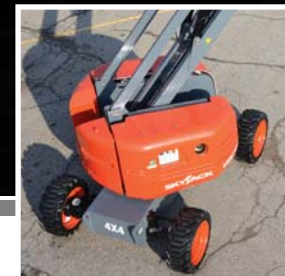
Low gross weight - 2 on a truck capability\*  
(\*weight increases when options and/or accessories are added)



Skyjack's standard color coded and numbered wiring system



Hard wired, relay based control system



Zero tailswing



2 year warranty standard