

PROLOG Mobile

for Windows

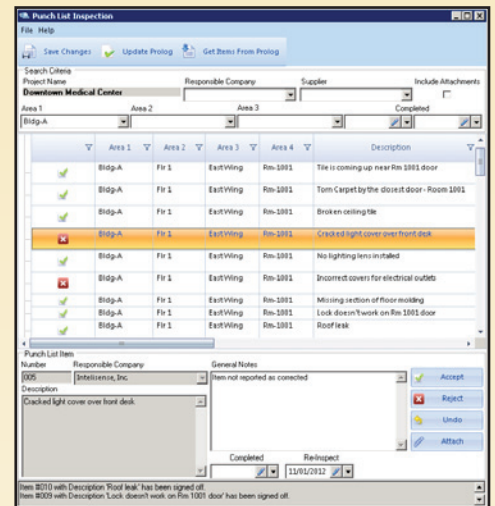


Prolog Mobile: Bringing Prolog Project Management to the Field

Prolog Mobile, natively built for Windows Mobile devices, lets you access and capture Prolog project information without any special integration, with or without an internet connection. Data is collected in real time from the field and synchronized with Prolog back in the office, creating a complete system of record for all project data.

Prolog Mobile extends Prolog in the following areas:

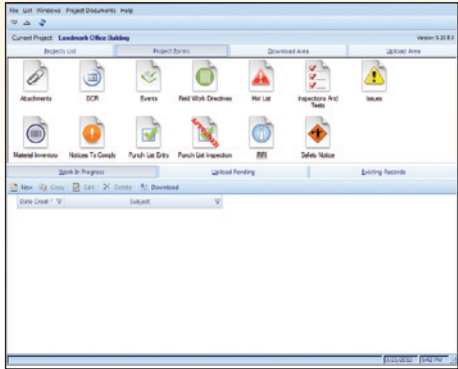
Activities	Advantage
Daily Construction Reports	Record daily construction activities, weather and general conditions for each project
Punch List Tracking	Reduce time required to complete a punch list
RFIs	Reduce response time and impact on project schedule
Safety Notices	Reduce safety violations and accidents through safety management
Inspections and Tests	Verify compliance with required inspections and tests
Events	Track production and milestone events
Field Work Directives	Reduce risk of surprise changes (for authorized work)
Hot Lists	Track follow-up items
Issues	Create an issue history to record all information related to specific issues
Notices to Comply	Increase quality control on a project
Document Viewing	Full access to the Prolog Document Management System
Material Inventory	Document all deliveries and associated inventory



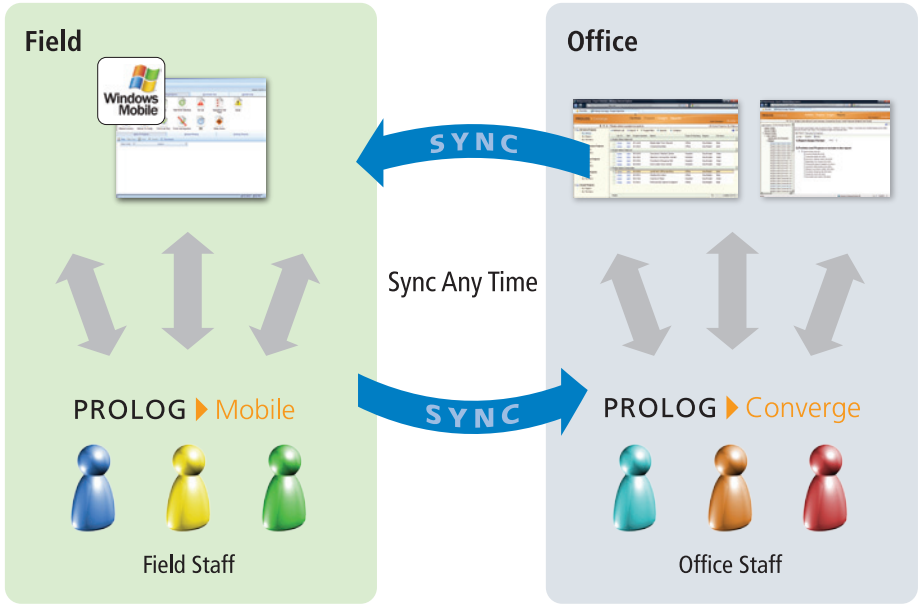
Capture critical project data in the field including safety notices, RFIs, Punch Lists and more.

Prolog Mobile Features

Works With or Without an Internet Connection
Available in Self-Host, SaaS or Managed Host deployment
Store and View Documents from Prolog's File Management System
Capture photo, audio, video
Annotate photos and documents
Works seamlessly with any Prolog client
Supports Prolog Project and Form security
Trigger and receive notifications
Option to synchronize latest document revisions only
Data is synchronized and stored directly in Prolog database
Prolog Nomenclature support
Upload multimedia and store into Prolog File Management without attaching to a Prolog record



Prolog Mobile works seamlessly with Prolog Manager or Prolog Converge.



System requirements

Windows Mobile: Windows 7

Prolog: Prolog Converge 9.6



1720 Prairie City Road
Suite 120
Folsom, California
95630
USA

(916) 294 2000
(916) 294 2001 fax
(800) 850 2660
www.meridiansystems.com
sales@meridiansystems.com

© Copyright 2012 Meridian Systems. All rights reserved. Prolog and Meridian Systems are registered trademarks of Meridian Systems, an independent subsidiary of Trimble, in the United States and other countries. The names and logos of other companies mentioned herein may be trademarks of their respective owners. This document is for informational purposes only. Meridian Systems makes no warranties, expressed or implied, in this document. 1112