



# Cat®

## 906H2, 907H2, 908H2

### Compact Wheel Loader

## Features

The Cat® 906H2, 907H2, 908H2 deliver high performance with outstanding versatility. Spacious cab with joystick control keeps you comfortable throughout the work day, allowing you to get more done. Loader design delivers strength and durability with superior control.

- **High Performance** – With its high full turn tipping loads and breakout forces, the H2-Series delivers a powerful solution for all customer applications.

- **Ease of Operation** – Great visibility, simple controls and the ergonomically designed, low effort joystick reduce fatigue and increase comfort.

- **Power Train** – The standard hydrostatic driveline is a 20km/h (12.4 mph) transmission. Heavy duty axles and 100% doff-lock are standard with ride control and 35km/h (21.7 mph) high speeder available as options.

- **High Flow Work Tools** – The standard skid steer loader style coupler combined with standard flow or optional high flow hydraulics allow the Cat® Compact Wheel Loaders to use a large range of work tools including hydro mechanical work tools.

- **Serviceability** – The design of the H2-Series allows quick and easy servicing. Tilt up engine hood and side service doors give exceptional access to the major components safely from ground level. S.O.S™ oil ports and pressure test points enable easy preventative maintenance.

## Specifications

### Engine

Engine Model	Cat® C3.3B DIT*	
<b>Rated Net Power @ 2,500 rpm</b>		
SAE J1349	51 kW	68 hp
ISO 9249/EEC	52 kW	70 hp
ISO 9249 (DIN)	52 kW	71 hp
<b>Maximum Gross Power</b>		
ISO 14396	55 kW	74 hp
ISO 14396 (DIN)	55 kW	75 hp

\* EU Stage IIIa compliant meets EU Emission Directive 04/26/EC

### Weights

Operating Weight		
906H2	5630kg	12,412 lb
907H2	5810 kg	12,809 lb
908H2	6465 kg	14,253 lb

### Buckets

Bucket Capacities		
906H2	0.75 – 1.2m <sup>3</sup>	0.98 – 1.6 yd <sup>3</sup>
907H2	0.75 – 1.2m <sup>3</sup>	0.98 – 1.6 yd <sup>3</sup>
908H2	0.9 – 1.5m <sup>3</sup>	1.2 – 2.0 yd <sup>3</sup>

### Hydraulic System

		906H	907H	908H
Main Relief	bar	235	235	235
3rd Aux Flow				
Standard	L/min	83	83	83
High Flow	L/min	125	125	125
Hydraulic Cycle Time				
Lift	secs	5	5	5
Lower	secs	4	4	4
Dump	secs	2	2	2
Rack Back	secs	2.5	2.5	2.5

### Travel Speeds

		906H	907H	908H
Speed 1	km/h	7	7	7
Speed 2	km/h	20	20	20
High Speed	km/h	35	35	35

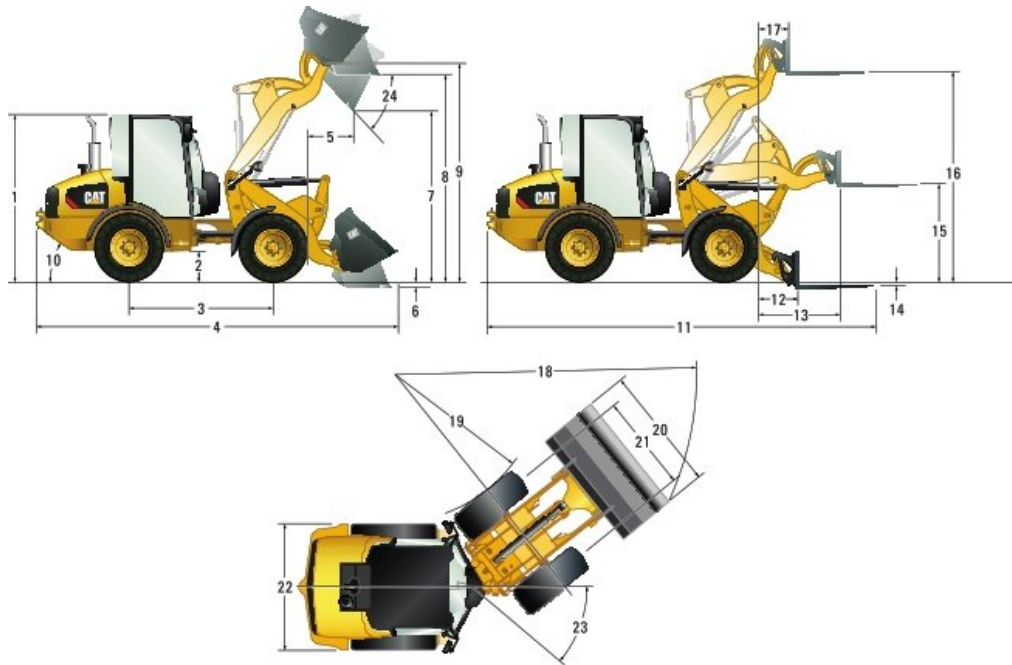
### Service Refill Capacities

		906H	907H	908H
Cooling System	L	24	24	24
Fuel Tank	L	52	78	78
Hydraulic System	L	95	95	95
Engine Oil	L	10	10	10

# 906H2, 907H2 and 908H2 Compact Wheel Loader

## Dimensions

All dimensions are approximate. Dimensions shown are based on the machine equipped with general purpose bucket and standard 405/70 SPT9 tires.



	With horizontal pin coupler			With SSL coupler		
	906H	907H	908H	906H	907H	908H
	mm	mm	mm	mm	mm	mm
<b>1</b> Cab Height	2465	2585	2650	2465	2585	2650
<b>2</b> Ground Clearance	300	300	340	300	300	340
<b>3</b> Wheelbase	2170	2170	2170	2170	2170	2170
<b>4</b> Overall Length with Bucket	5435	5435	5595	5585	5585	5760
<b>5</b> Reach at Max Dump Height	710	710	760	810	810	855
<b>6</b> Dig Depth	80	80	85	90	90	95
<b>7</b> Max Dump Height	2510	2510	2655	2395	2395	2540
<b>8</b> Load Over Height	3035	3035	3225	3025	3025	3215
<b>9</b> Hinge Pin at Max Height	3230	3230	3410	3230	3230	3410
<b>10</b> Departure Angle (degrees)	34°	34°	34°	34°	34°	34°
<b>11</b> Overall Length with Forks	5915	5915	6015	5945	5945	6150
<b>12</b> Reach at Ground Level	720	720	790	750	750	925
<b>13</b> Max Reach	1215	1215	1310	1265	1265	1445
<b>14</b> Fork Depth Below Ground (Above Ground)	25	25	70	(45)	(45)	(30)
<b>15</b> Fork Height at Max Reach	1425	1425	1450	1490	1490	1525
<b>16</b> Max Fork Height	3090	3090	3225	3160	3160	3300
<b>17</b> Fork Reach at Max Height	445	445	460	505	505	595
<b>18</b> Turning Radius Over Bucket	4400	4475	4510	4445	4515	4560
<b>19</b> Turning Radius Inside Tire	2240	2240	2080	2240	2240	2080
<b>20</b> Width Over Bucket	1880	2035	2060	1880	2035	2060
<b>21</b> Tire Gauge	1420	1420	1570	1420	1420	1570
<b>22</b> Machine Width	1840	1840	1985	1840	1840	1985
<b>23</b> Articulation Angle (degrees)	39°	39°	39°	39°	39°	39°
<b>24</b> Dump Angle at Max Height (degrees)	45°	45°	45°	45°	45°	45°

# 906H2, 907H2 and 908H2 Compact Wheel Loader

## Operating Specifications

Machine with full fuel tank, ROPS/FOPS cab, 75 kg operator, horizontal pin coupler (HP) or skid steer loader coupler (SSL) and general purpose bucket (GP).

		906H		907H		908H	
		HP	SSL	HP	SSL	HP	SSL
Coupler Type							
Tyre Size		405/70 R18		405/70 R18		405/0 R20	
Operating weight (ISO 6016:1998)	kg	5630	5630	5810	5810	6465	6465
Rated bucket capacity (ISO 7546:1983)	m <sup>3</sup>	0.9	0.9	1.0	1.0	1.1	1.1
Breakout force, bucket (ISO 14397-2:2007)	kN	51	42	51	42	57	47
Rated operating load at full turn, bucket (ISO 14397-1:2007)	kg	1700	1580	1705	1585	1825	1705
Straight tipping load, bucket (ISO 14397-1:2007)	kg	4280	3985	4640	4320	5100	4775
Full turn static tipping load, bucket (ISO 14397-1:2007)	kg	3400	3160	3410	3170	3650	3410
Rackback, transport position		52°	52°	52°	52°	52°	52°
Rated operating load at full turn, forks (EN 474-3:2006, firm and level ground, 1.25 stability and 500 mm load center)	kg	2150	2065	2205	2120	2515	2355
Rated operating load at full turn, forks (firm and level ground, 1.25 stability and 500 mm load center, transport 100 mm above ground)	kg	2740	2720	2810	2785	3080	2990

## Cab Features

Standard Cab Features	Base Cab*	Comfort Cab	Deluxe Cab	Canopy
Two access doors	•	•	•	
Fixed steering column	•			•
Adjustable steering column		•	•	
Vinyl suspension seat				•
Cloth suspension seat, arm rest	•	•		
Cloth, electric air suspension, arm/head rest, lumbar support and heated back seat			•	
Left window – fixed	•			
Left window – sliding		•	•	
Right window – sliding			•	
Heated rear window	•	•	•	
Coat hook	•	•	•	•
Cabin light	•	•	•	
Sun visor	•	•	•	•
Radio-ready kit (wiring, speaker, aerial and grilles)		•	•	
External knock back mirrors	•	•	•	•
Heater	•	•	•	
Lockable storage box	•	•	•	•
Adjustable internal mirror	•	•	•	•
<b>Optional Cab Features</b>				
Cat radio/CD/MP3/WMA/AUX	•	•	•	
Rear blind	•	•	•	
Heater and air conditioning	•	•	•	
Radio-ready kit (wiring, speaker, aerial and grilles)	•			

\* Base cab only available on the 906H2

## Maximum Material Densities

Based on ISO 7546:1983, and rated operating loads at full turn.

Bucket Type		General Purpose			Multi Purpose			Light Material		
		906H	907H	908H	906H	907H	908H	906H	907H	908H
Model										
Rated Capacity	m <sup>3</sup>	0.90	1.00	1.10	0.75	0.75	0.90	1.20	1.20	1.50
Dump Height										
Horizontal Pin Coupler	mm	2510	2510	2655	2500	2500	2665	2430	2430	2460
SSL Coupler	mm	2395	2395	2540	2470	2470	2630	2285	2285	2345
Maximum Material Density										
Horizontal Pin Coupler	kg/m <sup>3</sup>	1889	1706	1658	2184	2202	1967	1271	1310	1106
SSL Coupler	kg/m <sup>3</sup>	1755	1584	1549	2131	2149	1929	1208	1218	1034
Bucket Width	mm	1880	2035	2060	1880	1880	2060	2080	2080	2080
Bucket Weights										
Horizontal Pin BOCE	kg	395	413	444	557	557	603	462	462	515
Vertical Pin BOCE	kg	394	412	444	534	537	582	461	461	514

# 906H2, 907H2 and 908H2 Compact Wheel Loader

## Standard Equipment

Standard equipment may vary. Consult your Caterpillar dealer for details

### Transmission

Transmission, 20 km/h with heavy duty axles

Transmission inching function

Hydrostatic drive

### Loader

Hydraulic horizontal pin quick coupler or skid steer quick coupler

Proportional auxiliary hydraulic circuit

Loader arm float function

Connect under pressure hydraulic quick connector

Parallel lift Z-bar loader

### Engine

Cat® C3.4 EU Stage IIIA compliant

Two stage air cleaner with visual indicator

Cat extended life coolant

Lockable engine compartments

Easy quick release fuel filter/water separator

Engine oil drain valve

Closed circuit breather

### Electrical

Battery disconnect switch

Heavy duty battery, 12 V

Engine cold starter aid

Alternator 90 A

Service point connector for electronic diagnostics (Electronic Technician™)

### General

E-coat paint primer

Pressure test points

Recovery hitch and pin

Scheduled oil sampling S•O•S™ ports

### Operator Environment

Radio ready kit inc. speakers (not in base cab)

Two doors

Cup holder

Sun visor

Heated rear window

ROPS & FOPS certified cab

Adjustable wrist rest

Retractable seat belt (2 inch)

Cabin light

Auxiliary power sockets

Coat hook

Pressurized cab

On board digital display cluster

Heater with window, side and feet vents

Sound suppression

Multifunction joystick with direction control

Proportional auxiliary control

Two external knock back mirrors

Warning indicators for major systems

Wiper/washer front & rear

Easy clean cab floor

Lockable storage box

Adjustable internal mirror

## Optional Equipment

Optional equipment may vary. Consult your Caterpillar dealer for details.

### Transmission

Transmission control upgrade

100% Differential lock on both axles, selectable on the move

Ride control

Speeder, 35 km/h with secondary steering

### Loader

High flow auxiliary hydraulics

Load check valves

Return to dig work tool positioner

### Engine

Engine block heater 120 V

Engine oil drain valve (non spill eco drain)

### Electrical

Reverse alarm

Machine Security System (MSS)

Magnetic rotating beacon

Work tool wiring harness

Working lights, two front and two rear

### General

Custom colour

Rear light guards

Heavy duty coupler guard

Tire options including heavy duty tires

### Fluids

Biodegradable hydraulic oil

Cat extended life coolant (-50 °C)

### Operator Environment

Air conditioning

Retractable seat belt (3 inch)

Cat radio/CD/MP3/WMA/AUX

ROPS & FOPS certified canopy

Base cab for 906H 2

Comfort and deluxe cabs

Mechanical joystick (available only for 906H)

Radio ready kit for base cab (wiring, speakers, aerial and grille)

Rear blind

### Work Tools

For all work tools and standard/high flow options (consult your Caterpillar dealer)

For more complete information on Cat products, dealer services, and industry solutions, visit us on the web at [www.cat.com](http://www.cat.com)

© 2012 Caterpillar  
All Rights Reserved  
Printed in U.S.A.

Materials and specifications are subject to change without notice. Featured machines in photos may include additional equipment. See your Cat dealer for available options.

CAT, CATERPILLAR, SAFETY.CAT.COM, their respective logos, "Caterpillar Yellow" and the "Power Edge" trade dress, as well as corporate and product identity used herein, are trademarks of Caterpillar and may not be used without permission.

AEHQ6737 (03-12)

